



Datasheet for ABIN7147014
anti-Cathepsin K antibody (AA 115-329)



[Go to Product page](#)

3 Images

Overview

Quantity:	100 µL
Target:	Cathepsin K (CTSK)
Binding Specificity:	AA 115-329
Reactivity:	Human
Host:	Rabbit
Clonality:	Polyclonal
Conjugate:	This Cathepsin K antibody is un-conjugated
Application:	Western Blotting (WB), Immunohistochemistry (IHC), ELISA

Product Details

Immunogen:	Recombinant Human Cathepsin K protein (115-329AA)
Isotype:	IgG
Cross-Reactivity:	Human, Rat
Purification:	Antigen Affinity Purified

Target Details

Target:	Cathepsin K (CTSK)
Alternative Name:	CTSK (CTSK Products)
Background:	Background: Closely involved in osteoclastic bone resorption and may participate partially in the disorder of bone remodeling. Displays potent endoprotease activity against fibrinogen at

Target Details

acid pH . May play an important role in extracellular matrix degradation.

Aliases: Cathepsin K antibody, Cathepsin O antibody, Cathepsin O1 antibody, Cathepsin O2 antibody, Cathepsin X antibody, CATK_HUMAN antibody, CTSO2 antibody, Ctsk antibody, CTSO antibody, CTSO1 antibody, CTSO2 antibody, MGC23107 antibody, PKND antibody, PYCD antibody

UniProt: [P43235](#)

Pathways: [Activation of Innate immune Response](#), [Toll-Like Receptors Cascades](#)

Application Details

Application Notes: Recommended dilution: WB:1:200-1:1000, IHC:1:20-1:200,

Restrictions: For Research Use only

Handling

Format: Liquid

Buffer: PBS with 0.02 % sodium azide, 50 % glycerol, pH 7.3.

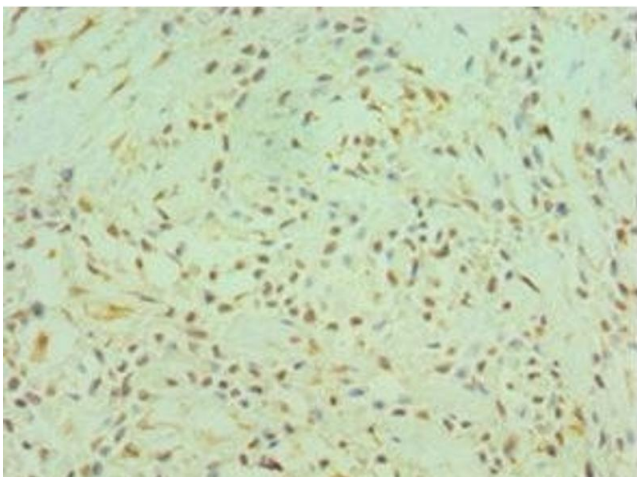
Preservative: Sodium azide

Precaution of Use: This product contains Sodium azide: a POISONOUS AND HAZARDOUS SUBSTANCE which should be handled by trained staff only.

Storage: -20 °C,-80 °C

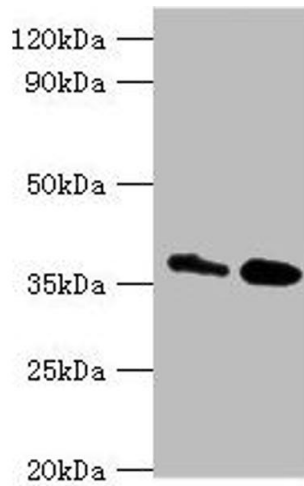
Storage Comment: Upon receipt, store at -20°C or -80°C. Avoid repeated freeze.

Images



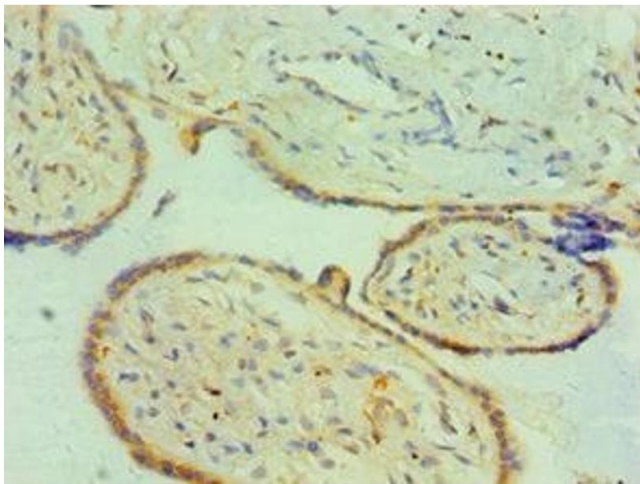
Immunohistochemistry

Image 1. Immunohistochemistry of paraffin-embedded human breast cancer using ABIN7147014 at dilution of 1:100



Western Blotting

Image 2. Western blot All lanes: CTSK antibody at 8 μ g/mL
Lane 1: MCF-7 whole cell lysate Lane 2: Rat brain tissue
Secondary Goat polyclonal to rabbit IgG at 1/10000 dilution
Predicted band size: 37 kDa Observed band size: 37 kDa



Immunohistochemistry

Image 3. Immunohistochemistry of paraffin-embedded human placenta tissue using ABIN7147014 at dilution of 1:100