



[Go to Product page](#)

Datasheet for ABIN7147023

anti-Cathepsin S antibody (AA 115-331)

2 Images

Overview

Quantity:	100 µg
Target:	Cathepsin S (CTSS)
Binding Specificity:	AA 115-331
Reactivity:	Human
Host:	Rabbit
Clonality:	Polyclonal
Conjugate:	This Cathepsin S antibody is un-conjugated
Application:	Western Blotting (WB), Immunohistochemistry (IHC), ELISA

Product Details

Immunogen:	Recombinant Human Cathepsin S protein (115-331AA)
Isotype:	IgG
Cross-Reactivity:	Human
Purification:	>95%, Protein G purified

Target Details

Target:	Cathepsin S (CTSS)
Alternative Name:	CTSS (CTSS Products)
Background:	Background: Thiol protease. Key protease responsible for the removal of the invariant chain from MHC class II molecules. The bond-specificity of this proteinase is in part similar to the

Target Details

specificities of cathepsin L.

Aliases: Cathepsin S antibody, CathepsinS antibody, CATS_HUMAN antibody, Ctss antibody

UniProt: [P25774](#)

Pathways: [Activation of Innate immune Response](#), [Toll-Like Receptors Cascades](#)

Application Details

Application Notes: Recommended dilution: WB:1:1000-1:5000, IHC:1:20-1:200,

Restrictions: For Research Use only

Handling

Format: Liquid

Buffer: Preservative: 0.03 % Proclin 300
Constituents: 50 % Glycerol, 0.01M PBS, PH 7.4

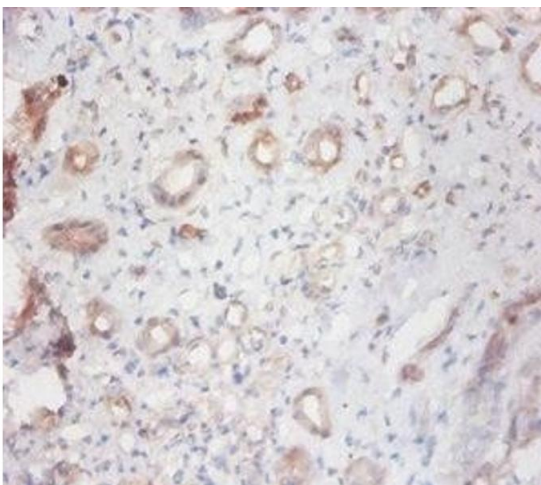
Preservative: ProClin

Precaution of Use: This product contains ProClin: a POISONOUS AND HAZARDOUS SUBSTANCE which should be handled by trained staff only.

Storage: -20 °C,-80 °C

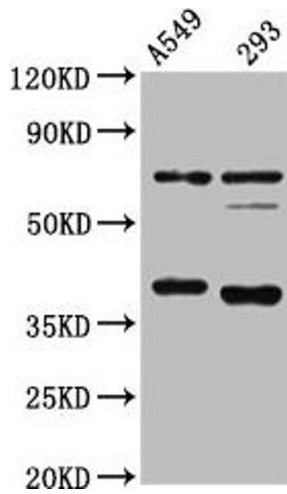
Storage Comment: Upon receipt, store at -20°C or -80°C. Avoid repeated freeze.

Images



Immunohistochemistry

Image 1. Immunohistochemistry of paraffin-embedded human kidney tissue using ABIN7147023 at dilution of 1:100



Western Blotting

Image 2. Western Blot Positive WB detected in: A549 whole cell lysate, 293 whole cell lysate All lanes: CTSS antibody at 1:4000 Secondary Goat polyclonal to rabbit IgG at 1/50000 dilution Predicted band size: 38, 32 kDa Observed band size: 38 kDa