



[Go to Product page](#)

Datasheet for ABIN7147027

## anti-Cathepsin Z antibody (AA 127-287)

### 2 Images

#### Overview

Quantity:	100 µg
Target:	Cathepsin Z (CTSZ)
Binding Specificity:	AA 127-287
Reactivity:	Human
Host:	Rabbit
Clonality:	Polyclonal
Conjugate:	This Cathepsin Z antibody is un-conjugated
Application:	ELISA, Immunohistochemistry (IHC)

#### Product Details

Immunogen:	Recombinant Human Cathepsin Z protein (127-287AA)
Isotype:	IgG
Cross-Reactivity:	Human
Purification:	>95%, Protein G purified

#### Target Details

Target:	Cathepsin Z (CTSZ)
Alternative Name:	CTSZ ( <a href="#">CTSZ Products</a> )
Background:	Background: Exhibits carboxy-monopeptidase as well as carboxy-dipeptidase activity. Aliases: Carboxypeptidase LB antibody, Cathepsin B2 antibody, Cathepsin IV antibody,

## Target Details

---

Cathepsin P antibody, Cathepsin X antibody, Cathepsin X precursor antibody, Cathepsin Y antibody, Cathepsin Z antibody, Cathepsin Z precursor antibody, Cathepsin Z1 antibody, CathepsinP antibody, CathepsinX antibody, CathepsinZ antibody, CATZ\_HUMAN antibody, CTSX antibody, CTSZ antibody, Cysteine type carboxypeptidase antibody, FLJ17088 antibody, Lysosomal carboxypeptidase B antibody, Preprocathepsin P antibody, PreprocathepsinP antibody

UniProt: [Q9UBR2](#)

Pathways: [Peptide Hormone Metabolism](#), [Regulation of Systemic Arterial Blood Pressure by Hormones](#)

## Application Details

---

Application Notes: Recommended dilution: IHC:1:20-1:200,

Restrictions: For Research Use only

## Handling

---

Format: Liquid

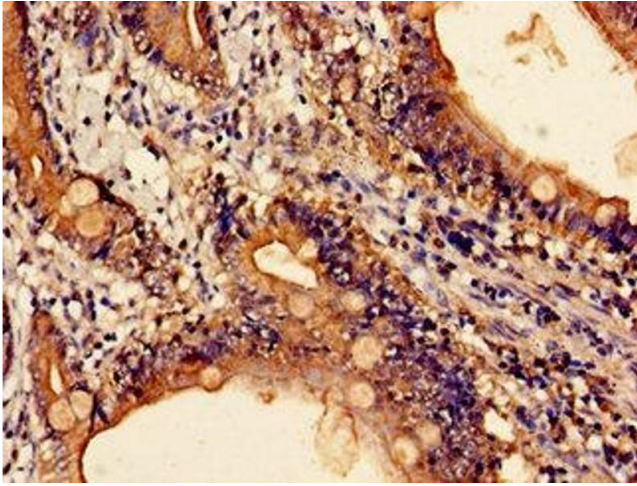
Buffer: Preservative: 0.03 % Proclin 300  
Constituents: 50 % Glycerol, 0.01M PBS, pH 7.4

Preservative: ProClin

Precaution of Use: This product contains ProClin: a POISONOUS AND HAZARDOUS SUBSTANCE which should be handled by trained staff only.

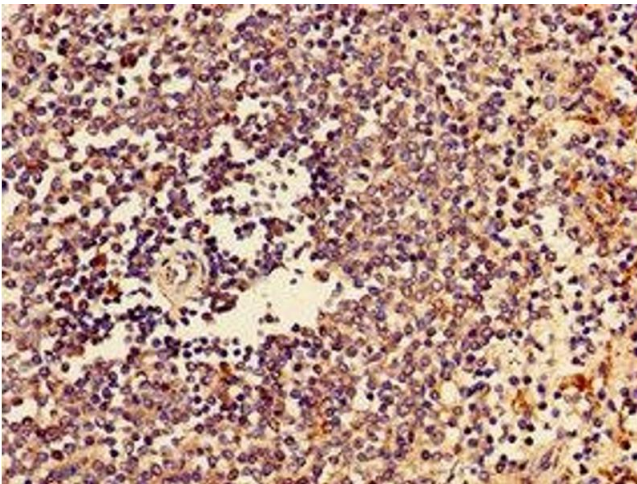
Storage: -20 °C,-80 °C

Storage Comment: Upon receipt, store at -20°C or -80°C. Avoid repeated freeze.



#### Immunohistochemistry

**Image 1.** Immunohistochemistry of paraffin-embedded human small intestine tissue using ABIN7147027 at dilution of 1:100



#### Immunohistochemistry

**Image 2.** Immunohistochemistry of paraffin-embedded human spleen tissue using ABIN7147027 at dilution of 1:100