

Datasheet for ABIN7147031
anti-CATSPER2 antibody (AA 5-112)[Go to Product page](#)

3 Images

Overview

Quantity:	100 µg
Target:	CATSPER2
Binding Specificity:	AA 5-112
Reactivity:	Human
Host:	Rabbit
Clonality:	Polyclonal
Conjugate:	This CATSPER2 antibody is un-conjugated
Application:	Western Blotting (WB), ELISA, Immunohistochemistry (IHC), Immunofluorescence (IF)

Product Details

Immunogen:	Recombinant Human Cation channel sperm-associated protein 2 protein (5-112AA)
Isotype:	IgG
Cross-Reactivity:	Human
Purification:	>95%, Protein G purified

Target Details

Target:	CATSPER2
Alternative Name:	CATSPER2 (CATSPER2 Products)
Background:	Background: Voltage-gated calcium channel that plays a central role in calcium-dependent physiological responses essential for successful fertilization, such as sperm hyperactivation,

Target Details

acrosome reaction and chemotaxis towards the oocyte. Activated by extracellular progesterone and prostaglandins following the sequence: progesterone > PGF1-alpha = PGE1 > PGA1 > PGE2 >> PGD2. The primary effect of progesterone activation is to shift voltage dependence towards more physiological, negative membrane potentials, it is not mediated by metabotropic receptors and second messengers. Sperm capacitation enhances the effect of progesterone by providing additional negative shift. Also activated by the elevation of intracellular pH .
Aliases: CATSPER2 antibody, Cation channel sperm-associated protein 2 antibody, CatSper2 antibody

UniProt: [Q96P56](#)

Application Details

Application Notes: Recommended dilution: WB:1:500-1:2000, IHC:1:20-1:200, IF:1:50-1:200,

Restrictions: For Research Use only

Handling

Format: Liquid

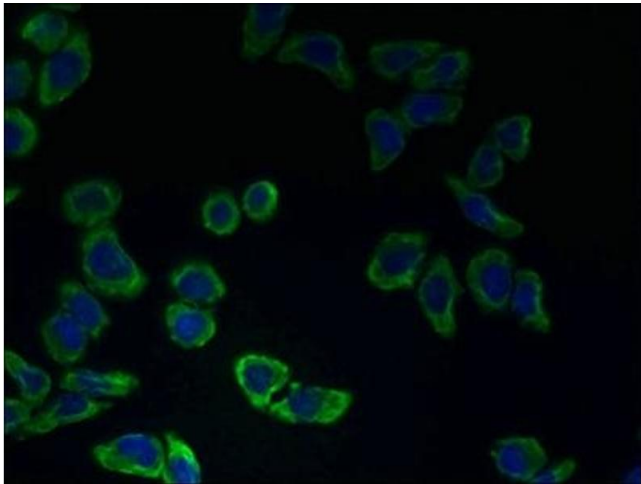
Buffer: Preservative: 0.03 % Proclin 300
Constituents: 50 % Glycerol, 0.01M PBS, PH 7.4

Preservative: ProClin

Precaution of Use: This product contains ProClin: a POISONOUS AND HAZARDOUS SUBSTANCE which should be handled by trained staff only.

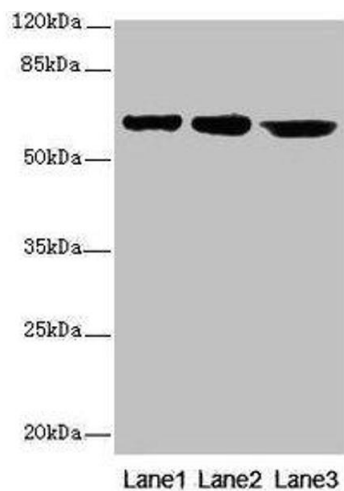
Storage: -20 °C,-80 °C

Storage Comment: Upon receipt, store at -20°C or -80°C. Avoid repeated freeze.



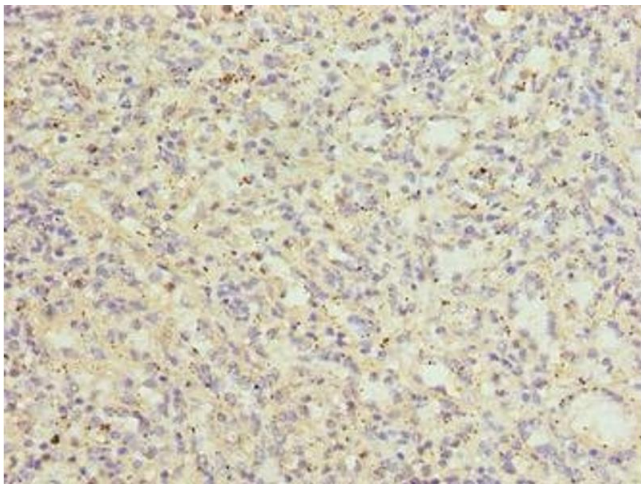
Immunofluorescence

Image 1. Immunofluorescent analysis of LO2 cells using ABIN7147031 at dilution of 1:100 and Alexa Fluor 488-conjugated AffiniPure Goat Anti-Rabbit IgG(H+L)



Western Blotting

Image 2. Western blot All lanes: CATSPER2 antibody at 4 μ g/mL Lane 1: Jurkat whole cell lysate Lane 2: HepG2 whole cell lysate Lane 3: 293T whole cell lysate Secondary Goat polyclonal to rabbit IgG at 1/10000 dilution Predicted band size: 63, 62, 49, 24 kDa Observed band size: 63 kDa



Immunohistochemistry

Image 3. Immunohistochemistry of paraffin-embedded human spleen tissue using ABIN7147031 at dilution of 1:100