

Datasheet for ABIN7147047  
**anti-IGF2R antibody (AA 2328-2491)**[Go to Product page](#)

## 2 Images

## Overview

Quantity:	100 µL
Target:	IGF2R
Binding Specificity:	AA 2328-2491
Reactivity:	Human
Host:	Rabbit
Clonality:	Polyclonal
Conjugate:	This IGF2R antibody is un-conjugated
Application:	ELISA, Immunohistochemistry (IHC), Immunofluorescence (IF)

## Product Details

Immunogen:	Recombinant Human Cation-independent mannose-6-phosphate receptor protein (2328-2491AA)
Isotype:	IgG
Cross-Reactivity:	Human
Purification:	>95%, Protein G purified

## Target Details

Target:	IGF2R
Alternative Name:	IGF2R ( <a href="#">IGF2R Products</a> )
Background:	Background: Transport of phosphorylated lysosomal enzymes from the Golgi complex and the

## Target Details

cell surface to lysosomes. Lysosomal enzymes bearing phosphomannosyl residues bind specifically to mannose-6-phosphate receptors in the Golgi apparatus and the resulting receptor-ligand complex is transported to an acidic prelysosomal compartment where the low pH mediates the dissociation of the complex. This receptor also binds IGF2. Acts as a positive regulator of T-cell coactivation, by binding DPP4.

Aliases: 300 kDa mannose 6 phosphate receptor antibody, 300 kDa mannose 6-phosphate receptor antibody, Cation independent mannose 6 phosphate receptor antibody, Cation-independent mannose-6-phosphate receptor antibody, CD222 antibody, CD222 antigen antibody, CI Man 6 P receptor antibody, CI Man-6-P receptor antibody, CI MPR antibody, CI-M6PR antibody, CI-MPR antibody, CIMPR antibody, IGF 2 receptor antibody, IGF 2R antibody, IGF II receptor antibody, IGF-II receptor antibody, IGF2 receptor antibody, Igf2r antibody, Insulin like growth factor 2 receptor antibody, Insulin like growth factor II receptor antibody, Insulin-like growth factor 2 receptor antibody, Insulin-like growth factor II receptor antibody, M6P R antibody, M6P/IGF2 receptor antibody, M6P/IGF2R antibody, M6PR antibody, mannose 6 phosphate receptor antibody, mannose 6 phosphate receptor, cation independent antibody, MPR 300 antibody, MPR300 antibody, MPRI antibody, MPRI\_HUMAN antibody

UniProt: [P11717](#)

## Application Details

Application Notes: Recommended dilution: IHC:1:20-1:200, IF:1:20-1:200,

Restrictions: For Research Use only

## Handling

Format: Liquid

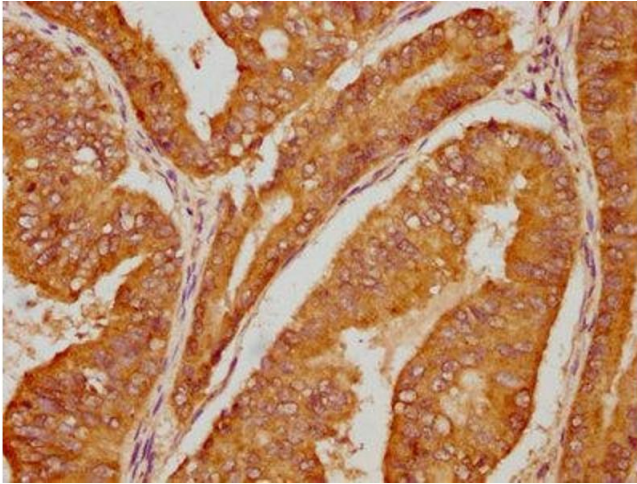
Buffer: Preservative: 0.03 % Proclin 300  
Constituents: 50 % Glycerol, 0.01M PBS, pH 7.4

Preservative: ProClin

Precaution of Use: This product contains ProClin: a POISONOUS AND HAZARDOUS SUBSTANCE which should be handled by trained staff only.

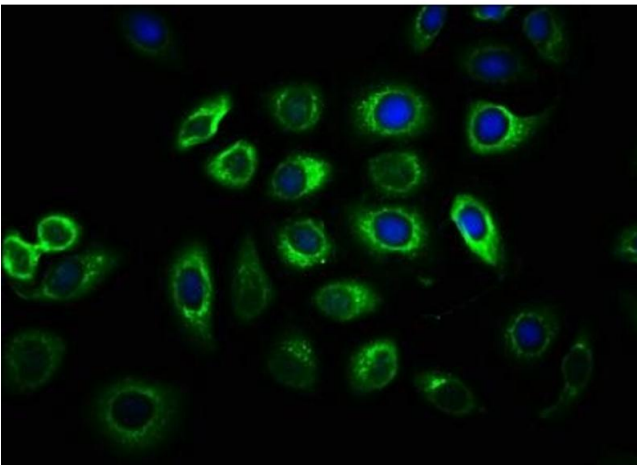
Storage: -20 °C,-80 °C

Storage Comment: Upon receipt, store at -20°C or -80°C. Avoid repeated freeze.



#### Immunohistochemistry

**Image 1.** IHC image of ABIN7147047 diluted at 1:100 and staining in paraffin-embedded human endometrial cancer performed on a Leica Bond™ system. After dewaxing and hydration, antigen retrieval was mediated by high pressure in a citrate buffer (pH 6.0). Section was blocked with 10 % normal goat serum 30 min at RT. Then primary antibody (1 % BSA) was incubated at 4 °C overnight. The primary is detected by a biotinylated secondary antibody and visualized using an HRP conjugated SP system.



#### Immunofluorescence

**Image 2.** Immunofluorescence staining of A549 cells with ABIN7147047 at 1:33, counter-stained with DAPI. The cells were fixed in 4 % formaldehyde, permeabilized using 0.2 % Triton X-100 and blocked in 10 % normal Goat Serum. The cells were then incubated with the antibody overnight at 4 °C. The secondary antibody was Alexa Fluor 488-conjugated AffiniPure Goat Anti-Rabbit IgG(H+L).