

Datasheet for ABIN7147084  
**anti-CEBPE antibody (AA 1-200)**[Go to Product page](#)

## 1 Image

## Overview

Quantity:	100 µg
Target:	CEBPE
Binding Specificity:	AA 1-200
Reactivity:	Human
Host:	Rabbit
Clonality:	Polyclonal
Conjugate:	This CEBPE antibody is un-conjugated
Application:	Western Blotting (WB), ELISA

## Product Details

Immunogen:	Recombinant Human CCAAT/enhancer-binding protein epsilon protein (1-200AA)
Isotype:	IgG
Cross-Reactivity:	Human, Rat
Purification:	>95%, Protein G purified

## Target Details

Target:	CEBPE
Alternative Name:	CEBPE ( <a href="#">CEBPE Products</a> )
Background:	Background: C/EBP are DNA-binding proteins that recognize two different motifs: the CCAAT homology common to many promoters and the enhanced core homology common to many

## Target Details

enhancers.

Aliases: C/EBP epsilon antibody, CCAAT/enhancer binding protein (C/EBP) epsilon antibody, CCAAT/enhancer binding protein epsilon antibody, CCAAT/enhancer-binding protein epsilon antibody, CEBPE antibody, CEBPE\_HUMAN antibody, CRP 1 antibody, CRP1 antibody

UniProt: [Q15744](#)

Pathways: [Cellular Response to Molecule of Bacterial Origin](#)

## Application Details

Application Notes: Recommended dilution: WB:1:200-1:2000,

Restrictions: For Research Use only

## Handling

Format: Liquid

Buffer: Preservative: 0.03 % Proclin 300  
Constituents: 50 % Glycerol, 0.01M PBS, pH 7.4

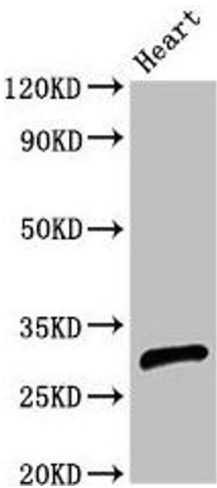
Preservative: ProClin

Precaution of Use: This product contains ProClin: a POISONOUS AND HAZARDOUS SUBSTANCE which should be handled by trained staff only.

Storage: -20 °C,-80 °C

Storage Comment: Upon receipt, store at -20°C or -80°C. Avoid repeated freeze.

## Images



### Western Blotting

**Image 1.** Western Blot Positive WB detected in: Rat heart tissue All lanes: CEBPE antibody at 2.7 µg/mL Secondary Goat polyclonal to rabbit IgG at 1/50000 dilution Predicted band size: 31 kDa Observed band size: 31 kDa