

Datasheet for ABIN7147123  
**anti-CD166 antibody (AA 28-180)**[Go to Product page](#)

## 2 Images

## Overview

Quantity:	100 µL
Target:	CD166 (ALCAM)
Binding Specificity:	AA 28-180
Reactivity:	Human
Host:	Rabbit
Clonality:	Polyclonal
Application:	Western Blotting (WB), Immunohistochemistry (IHC), ELISA

## Product Details

Immunogen:	Recombinant Human CD166 antigen protein (28-180AA)
Isotype:	IgG
Cross-Reactivity:	Human, Mouse
Purification:	Antigen Affinity Purified

## Target Details

Target:	CD166 (ALCAM)
Alternative Name:	ALCAM ( <a href="#">ALCAM Products</a> )
Background:	Background: Cell adhesion molecule that mediates both heterotypic cell-cell contacts via its interaction with CD6, as well as homotypic cell-cell contacts (PubMed:7760007, PubMed:15496415, PubMed:15048703, PubMed:16352806, PubMed:23169771, PubMed:24945728). Promotes T-cell activation and proliferation via its interactions with CD6

## Target Details

(PubMed:15048703, PubMed:16352806, PubMed:24945728). Contributes to the formation and maturation of the immunological synapse via its interactions with CD6 (PubMed:15294938, PubMed:16352806). Mediates homotypic interactions with cells that express ALCAM (PubMed:15496415, PubMed:16352806). Required for normal hematopoietic stem cell engraftment in the bone marrow (PubMed:24740813). Mediates attachment of dendritic cells onto endothelial cells via homotypic interaction (PubMed:23169771). Inhibits endothelial cell migration and promotes endothelial tube formation via homotypic interactions (PubMed:15496415, PubMed:23169771). Required for normal organization of the lymph vessel network. Required for normal hematopoietic stem cell engraftment in the bone marrow. Plays a role in hematopoiesis, required for normal numbers of hematopoietic stem cells in bone marrow. Promotes in vitro osteoblast proliferation and differentiation (By similarity). Promotes neurite extension, axon growth and axon guidance, axons grow preferentially on surfaces that contain ALCAM. Mediates outgrowth and pathfinding for retinal ganglion cell axons (By similarity).

Aliases: Activated leukocyte cell adhesion molecule antibody, ALCAM antibody, ALCAM protein antibody, CD 166 antibody, CD166 antibody, CD166 antigen antibody, CD166\_HUMAN antibody, FLJ3851 antibody, FLJ38514 antibody, MEMD antibody, MGC71733 antibody

UniProt: [Q13740](#)

## Application Details

Application Notes: Recommended dilution: WB:1:1000-1:5000, IHC:1:20-1:200,

Restrictions: For Research Use only

## Handling

Format: Liquid

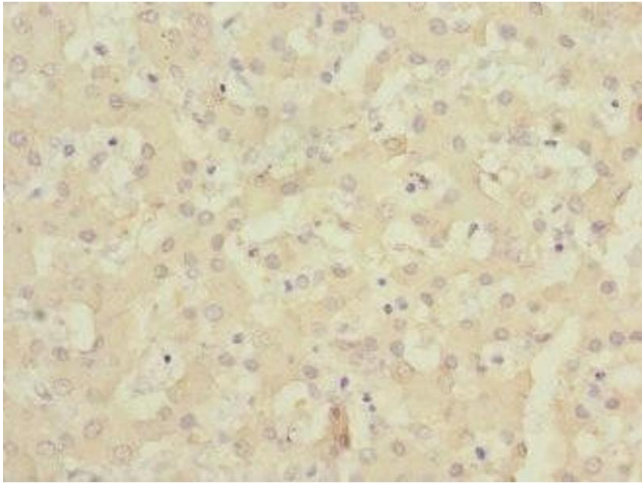
Buffer: PBS with 0.02 % sodium azide, 50 % glycerol, pH 7.3.

Preservative: Sodium azide

Precaution of Use: This product contains Sodium azide: a POISONOUS AND HAZARDOUS SUBSTANCE which should be handled by trained staff only.

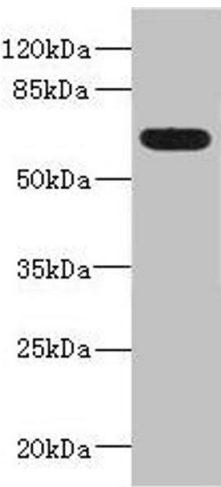
Storage: -20 °C,-80 °C

Storage Comment: Upon receipt, store at -20°C or -80°C. Avoid repeated freeze.



Immunohistochemistry

**Image 1.** Immunohistochemistry of paraffin-embedded human liver tissue using ABIN7147123 at dilution of 1:100



Western Blotting

**Image 2.** Western blot All lanes: ALCAMantibody IgG at 5.36 µg/mL + Mouse kidney tissue Secondary Goat polyclonal to rabbit IgG at 1/10000 dilution Predicted band size: 66, 64, 16, 34 kDa Observed band size: 66 kDa