



[Go to Product page](#)

Datasheet for ABIN7147139
anti-ITGB1 antibody (AA 297-380)

4 Images

Overview

Quantity:	100 µg
Target:	ITGB1
Binding Specificity:	AA 297-380
Reactivity:	Human
Host:	Rabbit
Clonality:	Polyclonal
Conjugate:	This ITGB1 antibody is un-conjugated
Application:	Western Blotting (WB), ELISA, Immunohistochemistry (IHC), Immunofluorescence (IF)

Product Details

Immunogen:	Recombinant Human CD209 antigen protein (297-380AA)
Isotype:	IgG
Cross-Reactivity:	Human, Mouse
Purification:	>95%, Protein G purified

Target Details

Target:	ITGB1
Alternative Name:	CD29 (ITGB1 Products)
Background:	Background: Pathogen-recognition receptor expressed on the surface of immature dendritic cells (DCs) and involved in initiation of primary immune response. Thought to mediate the

Target Details

endocytosis of pathogens which are subsequently degraded in lysosomal compartments. The receptor returns to the cell membrane surface and the pathogen-derived antigens are presented to resting T-cells via MHC class II proteins to initiate the adaptive immune response.

Aliases: C type lectin domain family 4 member L antibody, C-type lectin domain family 4 member L antibody, CD 209 antibody, CD209 antibody, CD209 antigen antibody, CD209 antigen-like protein A antibody, CD209 Molecule antibody, CD209_HUMAN antibody, Cd209a antibody, CDSIGN antibody, CIRE antibody, CLEC4L antibody, DC SIGN antibody, DC SIGN1 antibody, DC-SIGN antibody, DC-SIGN1 antibody, DCSIGN antibody, Dendritic cell specific ICAM 3 grabbing nonintegrin 1 antibody, Dendritic cell specific ICAM3 grabbing nonintegrin 1 antibody, Dendritic cell-specific ICAM-3-grabbing non-integrin 1 antibody, Dendritic cell-specific intracellular adhesion molecules (ICAM)-3 grabbing non-integrin antibody, Dengue fever, protection against, included antibody, Dendritic Cell Specific ICAM3 Grabbing Nonintegrin antibody, HIV GP120 Binding Protein antibody, MGC129965 antibody, MGC130443 antibody, SIGN-R1 antibody, SIGNR5 antibody

UniProt: [Q9NNX6](#)

Pathways: [Cell-Cell Junction Organization](#), [Regulation of G-Protein Coupled Receptor Protein Signaling](#), [CXCR4-mediated Signaling Events](#), [Signaling of Hepatocyte Growth Factor Receptor](#), [Integrin Complex](#), [SARS-CoV-2 Protein Interactome](#)

Application Details

Application Notes: Recommended dilution: WB:1:500-1:5000, IHC:1:20-1:200, IF:1:50-1:200,

Restrictions: For Research Use only

Handling

Format: Liquid

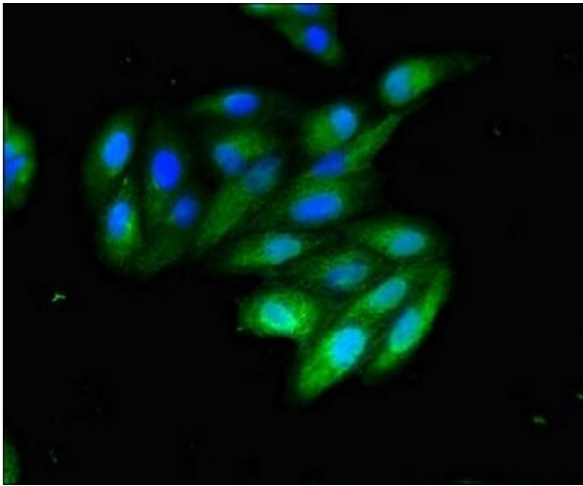
Buffer: Preservative: 0.03 % Proclin 300
Constituents: 50 % Glycerol, 0.01M PBS, pH 7.4

Preservative: ProClin

Precaution of Use: This product contains ProClin: a POISONOUS AND HAZARDOUS SUBSTANCE which should be handled by trained staff only.

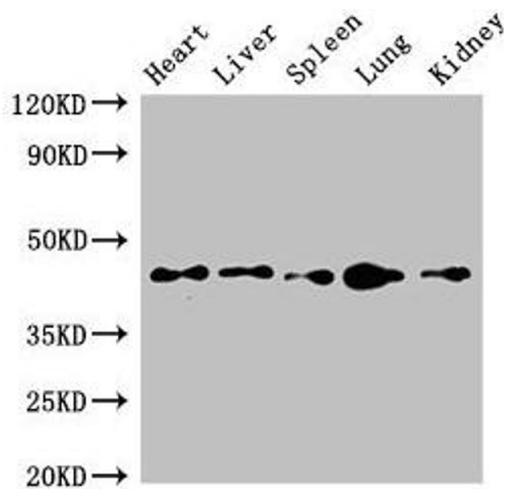
Storage: -20 °C,-80 °C

Storage Comment: Upon receipt, store at -20°C or -80°C. Avoid repeated freeze.



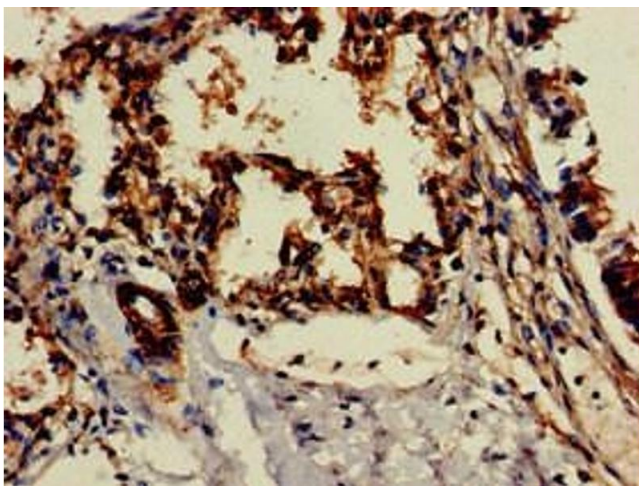
Immunofluorescence

Image 1. Immunofluorescent analysis of HepG2 cells using ABIN7147139 at dilution of 1:100 and Alexa Fluor 488-conjugated AffiniPure Goat Anti-Rabbit IgG(H+L)



Western Blotting

Image 2. Western Blot Positive WB detected in: Mouse heart tissue, Mouse liver tissue, Mouse spleen tissue, Mouse lung tissue, Mouse kidney tissue All lanes: CD209 antibody at 4 μ g/mL Secondary Goat polyclonal to rabbit IgG at 1/50000 dilution Predicted band size: 46, 36, 19, 44, 42, 31, 5, 38, 34 kDa Observed band size: 46 kDa



Immunohistochemistry

Image 3. Immunohistochemistry of paraffin-embedded human lung tissue using ABIN7147139 at dilution of 1:100

Please check the [product details page](#) for more images. Overall 4 images are available for ABIN7147139.