

Datasheet for ABIN7147154
anti-CD31 antibody (AA 28-315)

9 Images

[Go to Product page](#)

Overview

Quantity:	100 µL
Target:	CD31 (PECAM1)
Binding Specificity:	AA 28-315
Reactivity:	Human
Host:	Mouse
Clonality:	Monoclonal
Conjugate:	This CD31 antibody is un-conjugated
Application:	Flow Cytometry (FACS), Western Blotting (WB), Immunofluorescence (IF), Immunohistochemistry (IHC), ELISA

Product Details

Immunogen:	Recombinant Human CD31 protein (28-315AA)
Clone:	9E6E12
Isotype:	IgG2a
Cross-Reactivity:	Human
Purification:	Protein G purified

Target Details

Target:	CD31 (PECAM1)
Alternative Name:	CD31 (PECAM1 Products)

Target Details

Background:	<p>Background: Cell adhesion molecule which is required for leukocyte transendothelial migration (TEM) under most inflammatory conditions (PubMed:19342684, PubMed:17580308). Tyr-690 plays a critical role in TEM and is required for efficient trafficking of PECAM1 to and from the lateral border recycling compartment (LBRC) and is also essential for the LBRC membrane to be targeted around migrating leukocytes (PubMed:19342684). Heterophilic interaction with CD177 plays a role in transendothelial migration of neutrophils (PubMed:17580308).</p> <p>Homophilic ligation of PECAM1 prevents macrophage-mediated phagocytosis of neighboring viable leukocytes by transmitting a detachment signal (PubMed:12110892). Promotes macrophage-mediated phagocytosis of apoptotic leukocytes by tethering them to the phagocytic cells, PECAM1-mediated detachment signal appears to be disabled in apoptotic leukocytes (PubMed:12110892). Modulates bradykinin receptor BDKRB2 activation (PubMed:18672896). Regulates bradykinin- and hyperosmotic shock-induced ERK1/2 activation in endothelial cells (PubMed:18672896). Induces susceptibility to atherosclerosis (By similarity).</p> <p>Aliases: Platelet endothelial cell adhesion molecule, PECAM-1, EndoCAM, GPIIA', PECA1, CD31, PECAM1</p>
-------------	---

UniProt:	P16284
----------	------------------------

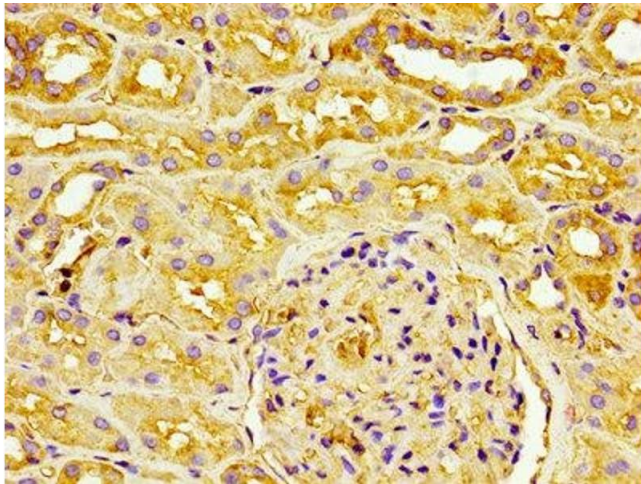
Pathways:	Regulation of Actin Filament Polymerization
-----------	---

Application Details

Application Notes:	Recommended dilution: WB:1:500-1:5000, IHC:1:50-1:500, IF:1:50-1:200,
Restrictions:	For Research Use only

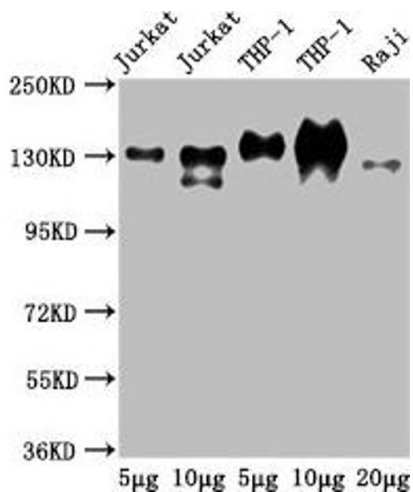
Handling

Format:	Liquid
Buffer:	Preservative: 0.03 % Proclin 300 Constituents: 50 % Glycerol, 0.01M PBS, PH 7.4
Preservative:	ProClin
Precaution of Use:	This product contains ProClin: a POISONOUS AND HAZARDOUS SUBSTANCE which should be handled by trained staff only.
Storage:	-20 °C,-80 °C
Storage Comment:	Upon receipt, store at -20°C or -80°C. Avoid repeated freeze.



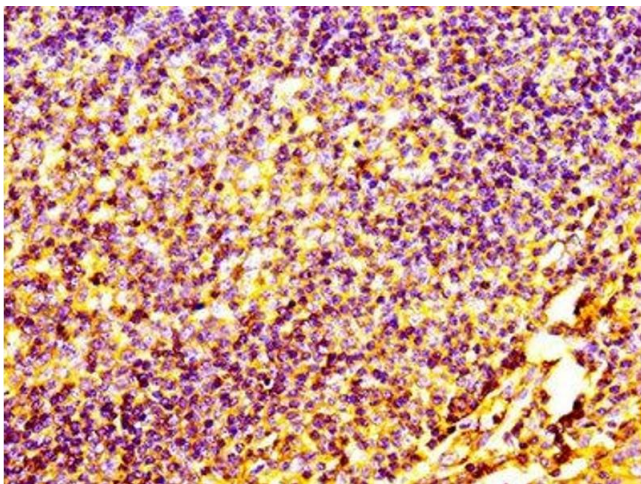
Immunohistochemistry

Image 1. IHC image of ABIN7147154 diluted at 1:100 and staining in paraffin-embedded human kidney tissue performed on a Leica Bond™ system. After dewaxing and hydration, antigen retrieval was mediated by high pressure in a citrate buffer (pH 6.0). Section was blocked with 10 % normal goat serum 30 min at RT. Then primary antibody (1 % BSA) was incubated at 4 °C overnight. The primary is detected by a biotinylated secondary antibody and visualized using an HRP conjugated SP system.



Western Blotting

Image 2. Western Blot Positive WB detected in: Jurkat whole cell lysate, THP-1 whole cell lysate, Raji whole cell lysate. All lanes: CD31 antibody at 2.5 µg/mL. Secondary Goat polyclonal to Mouse IgG at 1/50000 dilution. Predicted band size: 83, 81, 80, 82 kDa. Observed band size: 130 kDa.



Immunohistochemistry

Image 3. IHC image of ABIN7147154 diluted at 1:100 and staining in paraffin-embedded human tonsil tissue performed on a Leica Bond™ system. After dewaxing and hydration, antigen retrieval was mediated by high pressure in a citrate buffer (pH 6.0). Section was blocked with 10 % normal goat serum 30 min at RT. Then primary antibody (1 % BSA) was incubated at 4 °C overnight. The primary is detected by a biotinylated secondary antibody and visualized using an HRP conjugated SP system.

Please check the [product details page](#) for more images. Overall 9 images are available for ABIN7147154.