



[Go to Product page](#)

Datasheet for ABIN7147155

anti-Fc gamma RII (CD32) (AA 36-229) antibody

2 Images

Overview

Quantity:	100 µL
Target:	Fc gamma RII (CD32)
Binding Specificity:	AA 36-229
Reactivity:	Human
Host:	Rabbit
Clonality:	Polyclonal
Conjugate:	Un-conjugated
Application:	Immunohistochemistry (IHC), ELISA

Product Details

Immunogen:	Recombinant Human CD320 antigen protein (36-229AA)
Isotype:	IgG
Cross-Reactivity:	Human
Purification:	Antigen Affinity Purified

Target Details

Target:	Fc gamma RII (CD32)
Alternative Name:	CD32 (CD32 Products)
Background:	Background: Germinal center-B (GC-B) cells differentiate into memory B-cells and plasma cells (PC) through interaction with T-cells and follicular dendritic cells (FDC). CD320 augments the

Target Details

proliferation of PC precursors generated by IL-10. Receptor for the cellular uptake of transcobalamin bound cobalamin.

Aliases: 8D6 antibody, 8D6 antigen antibody, 8D6A antibody, CD320 antibody, CD320 antigen antibody, CD320_HUMAN antibody, FDC-signaling molecule 8D6 antibody, FDC-SM-8D6 antibody, TCblR antibody, Transcobalamin receptor antibody

UniProt: [Q9NPF0](#)

Application Details

Application Notes: Recommended dilution: IHC:1:20-1:200,

Restrictions: For Research Use only

Handling

Format: Liquid

Buffer: PBS with 0.02 % sodium azide, 50 % glycerol, pH 7.3.

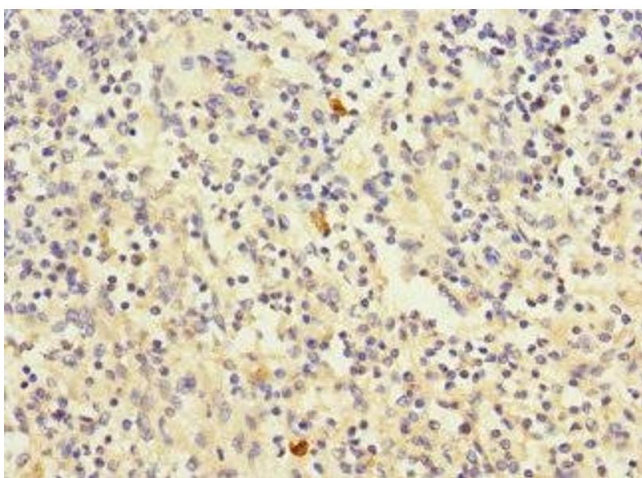
Preservative: Sodium azide

Precaution of Use: This product contains Sodium azide: a POISONOUS AND HAZARDOUS SUBSTANCE which should be handled by trained staff only.

Storage: -20 °C,-80 °C

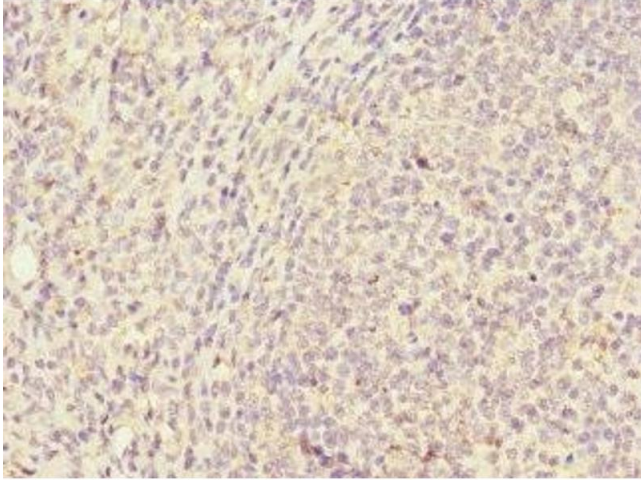
Storage Comment: Upon receipt, store at -20°C or -80°C. Avoid repeated freeze.

Images



Immunohistochemistry

Image 1. Immunohistochemistry of paraffin-embedded human spleen tissue using ABIN7147155 at dilution of 1:100



Immunohistochemistry

Image 2. Immunohistochemistry of paraffin-embedded human tonsil tissue using ABIN7147155 at dilution of 1:100