

Datasheet for ABIN7147175
anti-CD63 antibody (AA 103-203)[Go to Product page](#)

9 Images

Overview

Quantity:	100 µL
Target:	CD63
Binding Specificity:	AA 103-203
Reactivity:	Human
Host:	Mouse
Clonality:	Monoclonal
Conjugate:	This CD63 antibody is un-conjugated
Application:	Flow Cytometry (FACS), Western Blotting (WB), Immunohistochemistry (IHC), Immunofluorescence (IF), ELISA

Product Details

Immunogen:	Recombinant Human CD63 antigen protein (103-203AA)
Clone:	10F11E6
Isotype:	IgG1, IgG1 kappa
Cross-Reactivity:	Human, Rabbit
Purification:	Protein G purified

Target Details

Target:	CD63
Alternative Name:	CD63 (CD63 Products)

Target Details

Background: Cd63CD63 antigen antibody, CD antigen CD63 antibody

UniProt: [P41731](#)

Application Details

Application Notes: Recommended dilution: WB:1:1000-1:8000, IHC:1:50-1:200, IF:1:50-1:200, FC:1:50-1:200,

Restrictions: For Research Use only

Handling

Format: Liquid

Buffer: Preservative: 0.03 % Proclin 300
Constituents: 50 % Glycerol, 0.01M PBS, PH 7.4

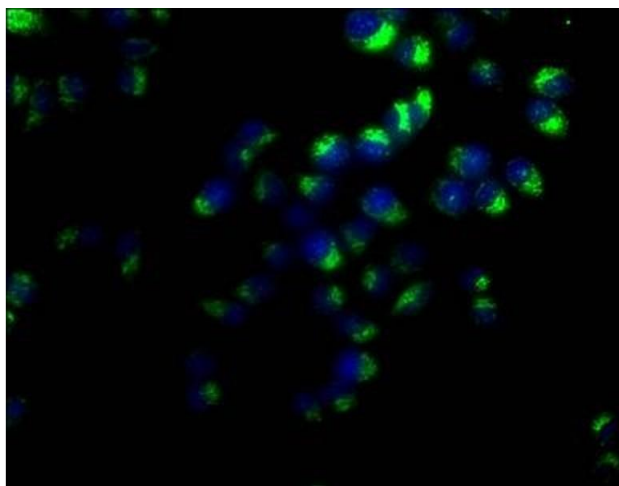
Preservative: ProClin

Precaution of Use: This product contains ProClin: a POISONOUS AND HAZARDOUS SUBSTANCE which should be handled by trained staff only.

Storage: -20 °C,-80 °C

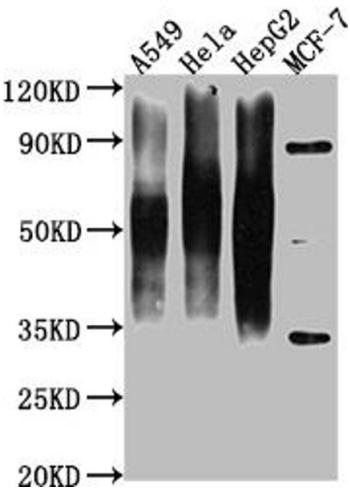
Storage Comment: Upon receipt, store at -20°C or -80°C. Avoid repeated freeze.

Images



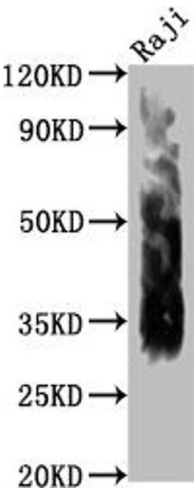
Immunofluorescence

Image 1. Immunofluorescence staining of Hela cells with ABIN7147175 at 1:50, counter-stained with DAPI. The cells were fixed in 4 % formaldehyde and blocked in 10 % normal Goat Serum. The cells were then incubated with the antibody overnight at 4 °C. Nuclear DNA was labeled in blue with DAPI. The secondary antibody was FITC-conjugated AffiniPure Goat Anti-Mouse IgG (H+L).



Western Blotting

Image 2. Western Blot Positive WB detected in: A549 whole cell lysate, HeLa whole cell lysate, HepG2 whole cell lysate, MCF-7 whole cell lysate All lanes CD63 antibody at 1:1000 Secondary Goat polyclonal to mouse IgG at 1/50000 dilution Predicted band size: 30-120 KD KDa Observed band size: 30-120 KD KDa Exposure time:1 min



Western Blotting

Image 3. Western Blot Positive WB detected in: Raji whole cell lysate All lanes CD63 antibody at 1:1000 Secondary Goat polyclonal to mouse IgG at 1/50000 dilution Predicted band size: 30-120 KD KDa Observed band size: 30-120 KD KDa Exposure time:1 min

Please check the [product details page](#) for more images. Overall 9 images are available for ABIN7147175.