



[Go to Product page](#)

Datasheet for ABIN7147242

## anti-PGS1 antibody (AA 110-400)

### 2 Images

#### Overview

Quantity:	100 µg
Target:	PGS1
Binding Specificity:	AA 110-400
Reactivity:	Human
Host:	Rabbit
Clonality:	Polyclonal
Conjugate:	This PGS1 antibody is un-conjugated
Application:	Western Blotting (WB), ELISA, Immunohistochemistry (IHC)

#### Product Details

Immunogen:	Recombinant Human CDP-diacylglycerol-glycerol-3-phosphate 3-phosphatidyltransferase, mitochondrial protein (110-400AA)
Isotype:	IgG
Cross-Reactivity:	Human, Mouse
Purification:	>95%, Protein G purified

#### Target Details

Target:	PGS1
Alternative Name:	PGS1 ( <a href="#">PGS1 Products</a> )
Background:	Background: Functions in the biosynthesis of the anionic phospholipids phosphatidylglycerol

## Target Details

---

and cardiolipin.

Aliases: CDP diacylglycerol glycerol 3 phosphate 3 phosphatidyltransferase mitochondrial antibody, CDP-diacylglycerol--glycerol-3-phosphate 3-phosphatidyltransferase antibody, HCG1642326, isoform CRA\_b antibody, mitochondrial antibody, PGP synthase 1 antibody, PGPS1\_HUMAN antibody, PGS1 antibody, PGS1 protein Fragment antibody, Phosphatidylglycerophosphate synthase 1 antibody

---

UniProt: [Q32NB8](#)

---

## Application Details

---

Application Notes: Recommended dilution: WB:1:1000-1:5000, IHC:1:20-1:200,

---

Restrictions: For Research Use only

---

## Handling

---

Format: Liquid

---

Buffer: Preservative: 0.03 % Proclin 300  
Constituents: 50 % Glycerol, 0.01M PBS, PH 7.4

---

Preservative: ProClin

---

Precaution of Use: This product contains ProClin: a POISONOUS AND HAZARDOUS SUBSTANCE which should be handled by trained staff only.

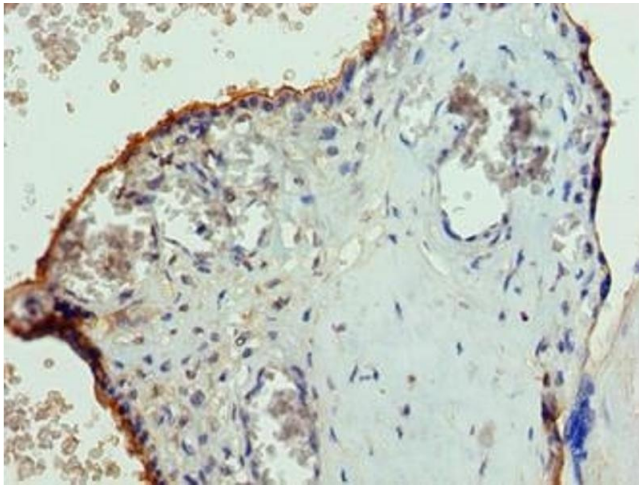
---

Storage: -20 °C,-80 °C

---

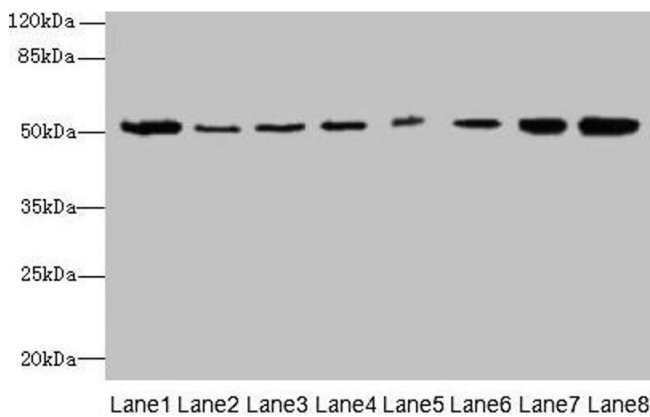
Storage Comment: Upon receipt, store at -20°C or -80°C. Avoid repeated freeze.

---



### Immunohistochemistry

**Image 1.** Immunohistochemistry of paraffin-embedded human placenta tissue using ABIN7147242 at dilution of 1:100



### Western Blotting

**Image 2.** Western blot All lanes: PGS1 antibody at 2  $\mu$ g/mL  
Lane 1: Mouse liver tissue Lane 2: HeLa whole cell lysate  
Lane 3: Jurkat whole cell lysate Lane 4: HepG2 whole cell lysate  
Lane 5: THP-1 whole cell lysate Lane 6: Mouse spleen tissue  
Lane 7: Mouse thymus tissue Lane 8: Mouse kidney tissue  
Secondary Goat polyclonal to rabbit IgG at 1/10000 dilution  
Predicted band size: 63, 52, 38, 6 kDa Observed band size: 52 kDa