

Datasheet for ABIN7147246  
**anti-CADM1 antibody (AA 45-344)**[Go to Product page](#)

## 2 Images

## Overview

Quantity:	100 µL
Target:	CADM1
Binding Specificity:	AA 45-344
Reactivity:	Human
Host:	Rabbit
Clonality:	Polyclonal
Conjugate:	This CADM1 antibody is un-conjugated
Application:	ELISA, Immunohistochemistry (IHC)

## Product Details

Immunogen:	Recombinant Human Cell adhesion molecule 1 protein (45-344AA)
Isotype:	IgG
Cross-Reactivity:	Human
Purification:	Antigen Affinity Purified

## Target Details

Target:	CADM1
Alternative Name:	CADM1 ( <a href="#">CADM1 Products</a> )
Background:	Background: Mediates homophilic cell-cell adhesion in a Ca <sup>2+</sup> -independent manner. Also mediates heterophilic cell-cell adhesion with CADM3 and PVRL3 in a Ca <sup>2+</sup> -independent

## Target Details

manner. Acts as a tumor suppressor in non-small-cell lung cancer (NSCLC) cells. Interaction with CRTAM promotes natural killer (NK) cell cytotoxicity and interferon-gamma (IFN-gamma) secretion by CD8+ cells in vitro as well as NK cell-mediated rejection of tumors expressing CADM3 in vivo. May contribute to the less invasive phenotypes of lepidic growth tumor cells. In mast cells, may mediate attachment to and promote communication with nerves. CADM1, together with MITF, is essential for development and survival of mast cells in vivo. Acts as a synaptic cell adhesion molecule and plays a role in the formation of dendritic spines and in synapse assembly (By similarity). May be involved in neuronal migration, axon growth, pathfinding, and fasciculation on the axons of differentiating neurons. May play diverse roles in the spermatogenesis including in the adhesion of spermatocytes and spermatids to Sertoli cells and for their normal differentiation into mature spermatozoa.

Aliases: BL2 antibody, Cadm1 antibody, CADM1\_HUMAN antibody, Cell adhesion molecule 1 antibody, DKFZp686F1789 antibody, IgSF4 antibody, IGSF4A antibody, Immunoglobulin superfamily member 4 antibody, MGC149785 antibody, MGC51880 antibody, NECL-2 antibody, NECL2 antibody, Nectin like 2 antibody, Nectin-like protein 2 antibody, RA175 antibody, SgIGSF antibody, Spermatogenic immunoglobulin superfamily antibody, ST17 antibody, sTSLC 1 antibody, Synaptic cell adhesion molecule antibody, SynCAM antibody, SynCAM1 antibody, TSLC-1 antibody, TSLC1 antibody, Tumor suppressor in lung cancer 1 antibody

UniProt: [Q9BY67](#)

Pathways: [Regulation of Leukocyte Mediated Immunity](#), [Positive Regulation of Immune Effector Process](#), [Cell-Cell Junction Organization](#), [Activated T Cell Proliferation](#)

## Application Details

Application Notes: Recommended dilution: IHC:1:20-1:200,

Restrictions: For Research Use only

## Handling

Format: Liquid

Buffer: PBS with 0.02 % sodium azide, 50 % glycerol, pH 7.3.

Preservative: Sodium azide

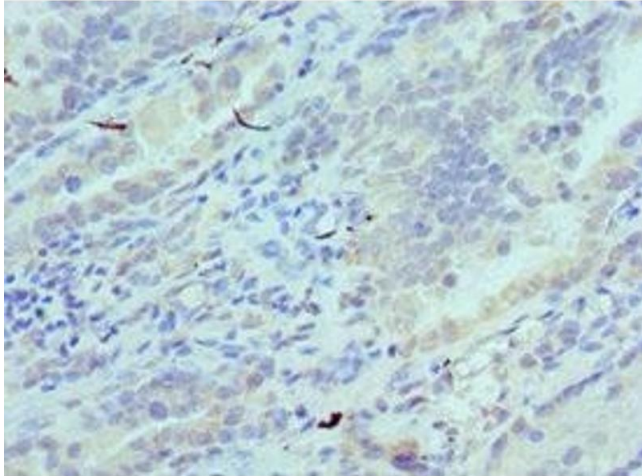
Precaution of Use: This product contains Sodium azide: a POISONOUS AND HAZARDOUS SUBSTANCE which should be handled by trained staff only.

## Handling

Storage: -20 °C, -80 °C

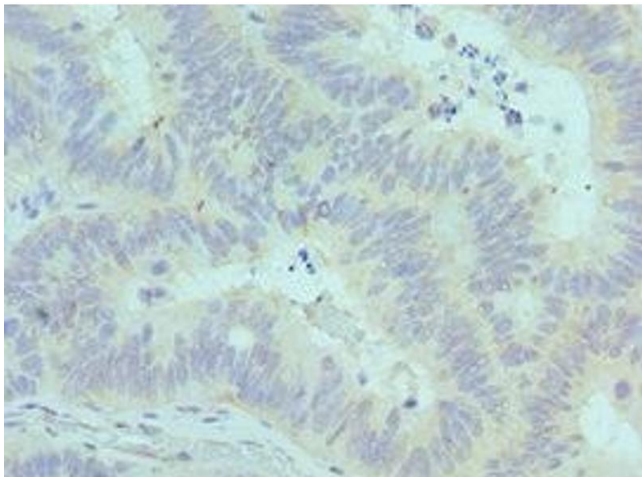
Storage Comment: Upon receipt, store at -20°C or -80°C. Avoid repeated freeze.

## Images



### Immunohistochemistry

**Image 1.** Immunohistochemistry of paraffin-embedded human lung cancer using ABIN7147246 at dilution of 1:100



### Immunohistochemistry

**Image 2.** Immunohistochemistry of paraffin-embedded human colon cancer using ABIN7147246 at dilution of 1:100