

Datasheet for ABIN7147255
anti-RAD9A antibody (AA 267-341)[Go to Product page](#)

2 Images

Overview

Quantity:	100 µg
Target:	RAD9A
Binding Specificity:	AA 267-341
Reactivity:	Human
Host:	Rabbit
Clonality:	Polyclonal
Conjugate:	This RAD9A antibody is un-conjugated
Application:	ELISA, Immunohistochemistry (IHC)

Product Details

Immunogen:	Recombinant Human Cell cycle checkpoint control protein RAD9A protein (267-341AA)
Isotype:	IgG
Cross-Reactivity:	Human
Purification:	>95%, Protein G purified

Target Details

Target:	RAD9A
Alternative Name:	RAD9A (RAD9A Products)
Background:	Background: Component of the 9-1-1 cell-cycle checkpoint response complex that plays a major role in DNA repair. The 9-1-1 complex is recruited to DNA lesion upon damage by the

Target Details

RAD17-replication factor C (RFC) clamp loader complex. Acts then as a sliding clamp platform on DNA for several proteins involved in long-patch base excision repair (LP-BER). The 9-1-1 complex stimulates DNA polymerase beta (POLB) activity by increasing its affinity for the 3'-OH end of the primer-template and stabilizes POLB to those sites where LP-BER proceeds, endonuclease FEN1 cleavage activity on substrates with double, nick, or gap flaps of distinct sequences and lengths, and DNA ligase I (LIG1) on long-patch base excision repair substrates. The 9-1-1 complex is necessary for the recruitment of RHN01 to sites of double-stranded breaks (DSB) occurring during the S phase. RAD9A possesses 3'→5' double stranded DNA exonuclease activity. Its phosphorylation by PRKCD may be required for the formation of the 9-1-1 complex.

Aliases: Cell cycle checkpoint control protein antibody, Cell cycle checkpoint control protein RAD9A antibody, DNA repair exonuclease rad9 homolog A antibody, hRAD 9 antibody, hRAD9 antibody, Rad 9 antibody, RAD 9A antibody, RAD9 (S pombe) homolog antibody, RAD9 homolog A antibody, RAD9 homolog antibody, Rad9a antibody, RAD9A_HUMAN antibody

UniProt: [Q99638](#)

Pathways: [Positive Regulation of Response to DNA Damage Stimulus](#)

Application Details

Application Notes: Recommended dilution: IHC:1:20-1:200,

Restrictions: For Research Use only

Handling

Format: Liquid

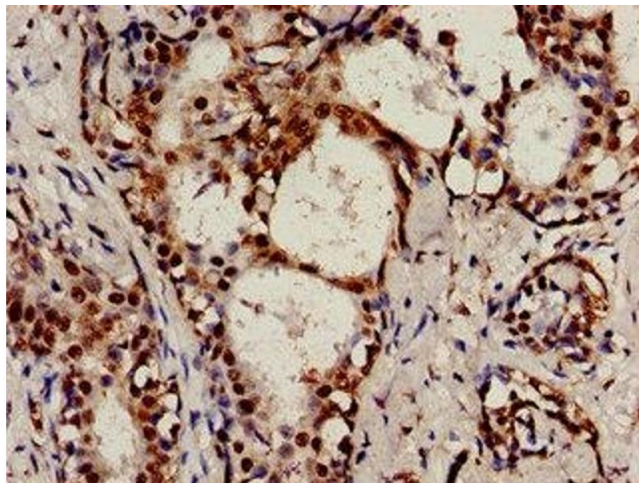
Buffer: Preservative: 0.03 % Proclin 300
Constituents: 50 % Glycerol, 0.01M PBS, pH 7.4

Preservative: ProClin

Precaution of Use: This product contains ProClin: a POISONOUS AND HAZARDOUS SUBSTANCE which should be handled by trained staff only.

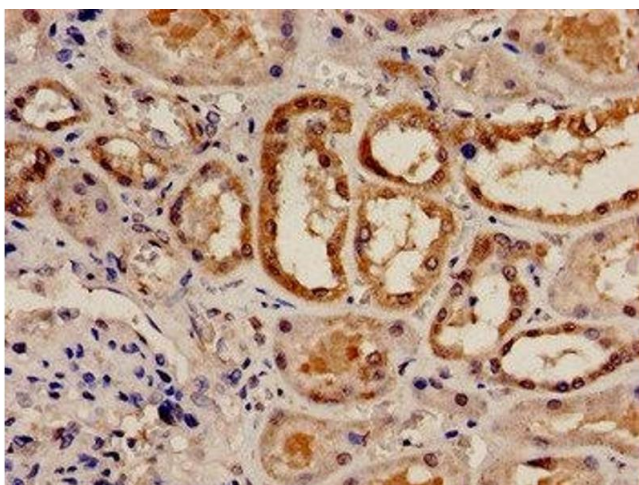
Storage: -20 °C,-80 °C

Storage Comment: Upon receipt, store at -20°C or -80°C. Avoid repeated freeze.



Immunocytochemistry

Image 1. Immunocytochemistry analysis of human breast cancer using ABIN7147255 at dilution of 1:100



Immunohistochemistry

Image 2. Immunohistochemistry analysis of human kidney tissue using ABIN7147255 at dilution of 1:100