



[Go to Product page](#)

Datasheet for ABIN7147281
anti-CDC42 antibody (AA 2-188)

1 Image

Overview

Quantity:	100 µg
Target:	CDC42
Binding Specificity:	AA 2-188
Reactivity:	Human
Host:	Rabbit
Clonality:	Polyclonal
Conjugate:	This CDC42 antibody is un-conjugated
Application:	Western Blotting (WB), ELISA

Product Details

Immunogen:	Recombinant Human Cell division control protein 42 homolog protein (2-188AA)
Isotype:	IgG
Cross-Reactivity:	Human
Purification:	>95%, Protein G purified

Target Details

Target:	CDC42
Alternative Name:	CDC42 (CDC42 Products)
Background:	Background: Plasma membrane-associated small GTPase which cycles between an active GTP-bound and an inactive GDP-bound state. In active state binds to a variety of effector

Target Details

proteins to regulate cellular responses. Involved in epithelial cell polarization processes. Regulates the bipolar attachment of spindle microtubules to kinetochores before chromosome congression in metaphase. Plays a role in the extension and maintenance of the formation of thin, actin-rich surface projections called filopodia. Mediates CDC42-dependent cell migration. Aliases: CDC42 antibody, CDC42_HUMAN antibody, CDC42Hs antibody, Cell division control protein 42 homolog antibody, Cell division cycle 42 (GTP binding protein 25 kDa) antibody, Cell division cycle 42 antibody, dJ224A6.1.1 (cell division cycle 42 (GTP-binding protein, 25kD)) antibody, dJ224A6.1.2 (cell division cycle 42 (GTP-binding protein, 25kD)) antibody, G25K antibody, G25K GTP-binding protein antibody, Growth regulating protein antibody, GTP binding protein 25 kDa antibody, Small GTP binding protein CDC42 antibody, TKS antibody

UniProt: [P60953](#)

Pathways: [MAPK Signaling](#), [Microtubule Dynamics](#), [RTK Signaling](#), [WNT Signaling](#), [TCR Signaling](#), [EGFR Signaling Pathway](#), [Regulation of Actin Filament Polymerization](#), [Regulation of Muscle Cell Differentiation](#), [Cell-Cell Junction Organization](#), [Maintenance of Protein Location](#), [Skeletal Muscle Fiber Development](#), [Signaling Events mediated by VEGFR1 and VEGFR2](#), [EGFR Downregulation](#), [VEGF Signaling](#)

Application Details

Application Notes: Recommended dilution: WB:1:1000-1:5000,

Restrictions: For Research Use only

Handling

Format: Liquid

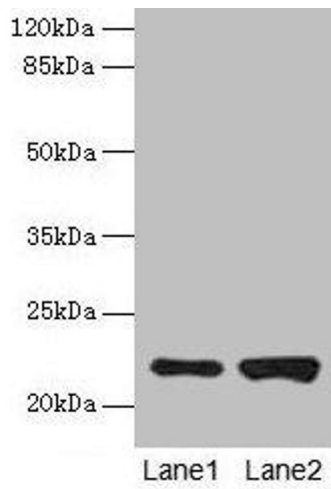
Buffer: Preservative: 0.03 % Proclin 300
Constituents: 50 % Glycerol, 0.01M PBS, PH 7.4

Preservative: ProClin

Precaution of Use: This product contains ProClin: a POISONOUS AND HAZARDOUS SUBSTANCE which should be handled by trained staff only.

Storage: -20 °C,-80 °C

Storage Comment: Upon receipt, store at -20°C or -80°C. Avoid repeated freeze.



Western Blotting

Image 1. Western blot All lanes: CDC42 antibody at 6 μ g/mL Lane 1: HeLa whole cell lysate Lane 2: Jurkat whole cell lysate Secondary Goat polyclonal to rabbit IgG at 1/10000 dilution Predicted band size: 22 kDa Observed band size: 22 kDa