

Datasheet for ABIN7147325  
**anti-MCAM antibody (AA 50-646)**[Go to Product page](#)

## 7 Images

## Overview

Quantity:	100 µL
Target:	MCAM
Binding Specificity:	AA 50-646
Reactivity:	Human
Host:	Mouse
Clonality:	Monoclonal
Conjugate:	This MCAM antibody is un-conjugated
Application:	Flow Cytometry (FACS), Western Blotting (WB), Immunofluorescence (IF), ELISA

## Product Details

Immunogen:	Recombinant Human Cell surface glycoprotein MUC18 protein (50-646AA)
Clone:	4D10C7
Isotype:	IgG2a
Cross-Reactivity:	Human
Purification:	Protein G purified

## Target Details

Target:	MCAM
Alternative Name:	CD146 ( <a href="#">MCAM Products</a> )
Background:	Background: Plays a role in cell adhesion, and in cohesion of the endothelial monolayer at

## Target Details

intercellular junctions in vascular tissue. Its expression may allow melanoma cells to interact with cellular elements of the vascular system, thereby enhancing hematogeneous tumor spread. Could be an adhesion molecule active in neural crest cells during embryonic development. Acts as surface receptor that triggers tyrosine phosphorylation of FYN and PTK2/FAK1, and a transient increase in the intracellular calcium concentration.

Aliases: Cell surface glycoprotein MUC18 (Cell surface glycoprotein P1H12) (Melanoma cell adhesion molecule) (Melanoma-associated antigen A32) (Melanoma-associated antigen MUC18) (S-endo 1 endothelial-associated antigen) (CD antigen CD146), MCAM, MUC18

UniProt: [P43121](#)

## Application Details

Application Notes: Recommended dilution: WB:1:500-1:2000, IF:1:50-1:200,

Restrictions: For Research Use only

## Handling

Format: Liquid

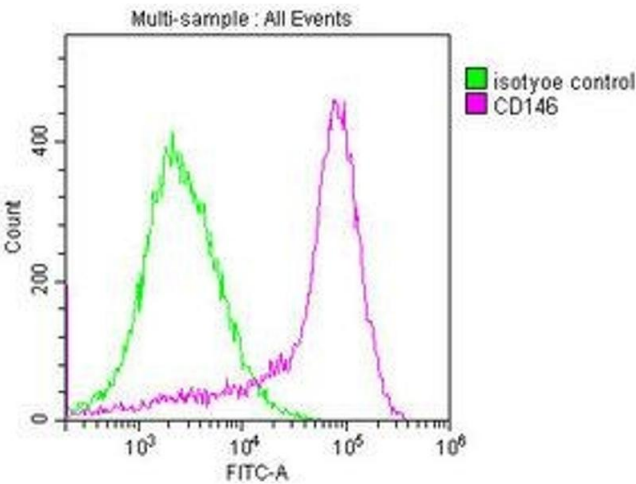
Buffer: Preservative: 0.03 % Proclin 300  
Constituents: 50 % Glycerol, 0.01M PBS, PH 7.4

Preservative: ProClin

Precaution of Use: This product contains ProClin: a POISONOUS AND HAZARDOUS SUBSTANCE which should be handled by trained staff only.

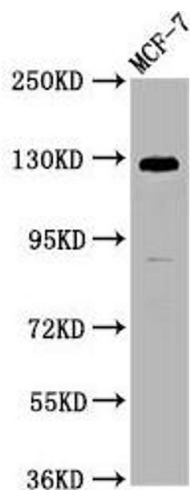
Storage: -20 °C,-80 °C

Storage Comment: Upon receipt, store at -20°C or -80°C. Avoid repeated freeze.



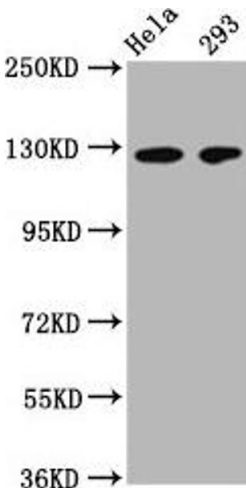
### Flow Cytometry

**Image 1.** Overlay histogram showing MCF-7 cells stained with ABIN7147325 (red line) at 1:400. The cells were incubated in 1x PBS /10 % normal goat serum to block non-specific protein-protein interactions followed by primary antibody for 1 h at 4 °C. The secondary antibody used was FITC goat anti-mouse IgG(H+L) at 1/200 dilution for 1 h at 4 °C. Isotype control antibody (green line) was used under the same conditions. Acquisition of >10,000 events was performed.



### Western Blotting

**Image 2.** Western Blot Positive WB detected in: MCF-7 whole cell lysate All lanes: CD146 antibody at 1:1250 Secondary Goat polyclonal to Mouse IgG at 1/50000 dilution Predicted band size: 72, 58 kDa Observed band size: 120 kDa



### Western Blotting

**Image 3.** Western Blot Positive WB detected in: HeLa whole cell lysate, 293 whole cell lysate All lanes: CD146 antibody at 1:500 Secondary Goat polyclonal to Mouse IgG at 1/50000 dilution Predicted band size: 72, 58 kDa Observed band size: 120 kDa

Please check the [product details page](#) for more images. Overall 7 images are available for ABIN7147325.