

Datasheet for ABIN7147366  
**anti-CENPK antibody (AA 1-269)**[Go to Product page](#)

## 4 Images

## Overview

Quantity:	100 µL
Target:	CENPK
Binding Specificity:	AA 1-269
Reactivity:	Human
Host:	Rabbit
Clonality:	Polyclonal
Conjugate:	This CENPK antibody is un-conjugated
Application:	Western Blotting (WB), ELISA, Immunohistochemistry (IHC), Immunoprecipitation (IP)

## Product Details

Immunogen:	Recombinant Human Centromere protein K protein (1-269AA)
Isotype:	IgG
Cross-Reactivity:	Human
Purification:	Antigen Affinity Purified

## Target Details

Target:	CENPK
Alternative Name:	CENPK ( <a href="#">CENPK Products</a> )
Background:	Background: Component of the CENPA-CAD (nucleosome distal) complex, a complex recruited to centromeres which is involved in assembly of kinetochore proteins, mitotic progression and

## Target Details

chromosome segregation. May be involved in incorporation of newly synthesized CENPA into centromeres via its interaction with the CENPA-NAC complex. Acts in coordination with CASC5/KNL1 to recruit the NDC80 complex to the outer kinetochore.

Aliases: CENPK antibody, ICEN37 antibody, FKSG14 antibody, Centromere protein K antibody, CENP-K antibody, Interphase centromere complex protein 37 antibody, Protein AF-5alpha antibody, p33 antibody

UniProt: [Q9BS16](#)

## Application Details

Application Notes: Recommended dilution: WB:1:1000-1:5000, IHC:1:20-1:200, IP:1:200-1:2000,

Restrictions: For Research Use only

## Handling

Format: Liquid

Buffer: PBS with 0.02 % sodium azide, 50 % glycerol, pH 7.3.

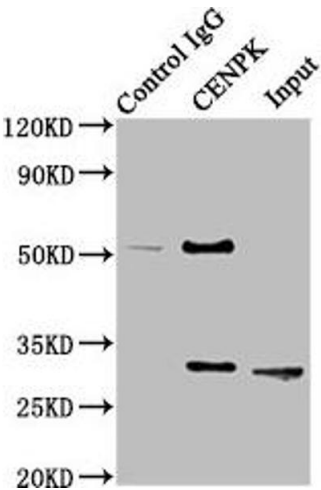
Preservative: Sodium azide

Precaution of Use: This product contains Sodium azide: a POISONOUS AND HAZARDOUS SUBSTANCE which should be handled by trained staff only.

Storage: -20 °C,-80 °C

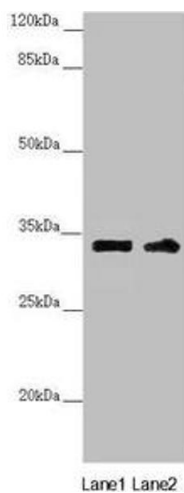
Storage Comment: Upon receipt, store at -20°C or -80°C. Avoid repeated freeze.

## Images



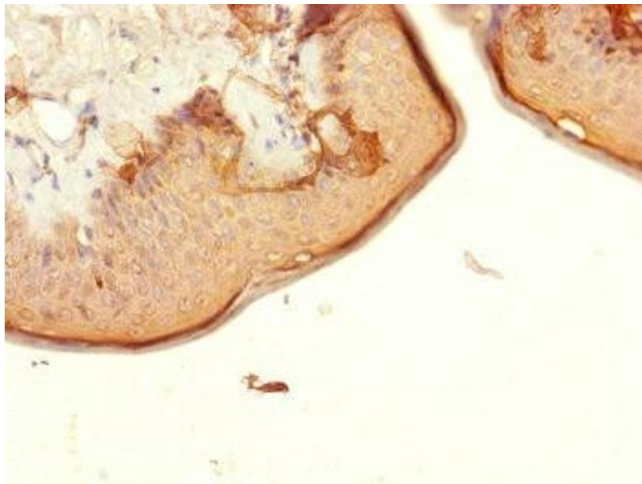
### Western Blotting

**Image 1.** Immunoprecipitating CENPK in HeLa whole cell lysate Lane 1: Rabbit control IgG instead of ABIN7147366 in HeLa whole cell lysate. For western blotting, a HRP-conjugated Protein G antibody was used as the secondary antibody (1/2000) Lane 2: ABIN7147366 (8 µg) + HeLa whole cell lysate (500 µg) Lane 3: HeLa whole cell lysate (10 µg)



### Western Blotting

**Image 2.** Western blot All lanes: CENPK antibody at 3.98  $\mu$ g/mL Lane 1: PC-3 whole cell lysate Lane 2: 293T whole cell lysate Secondary Goat polyclonal to rabbit IgG at 1/10000 dilution Predicted band size: 32 kDa Observed band size: 32 kDa



### Immunohistochemistry

**Image 3.** Immunohistochemistry of paraffin-embedded human skin tissue using ABIN7147366 at dilution of 1:100

Please check the [product details page](#) for more images. Overall 4 images are available for ABIN7147366.