



[Go to Product page](#)

Datasheet for ABIN7147387

anti-CEP135 antibody (AA 94-195)

1 Image

Overview

Quantity:	100 µg
Target:	CEP135
Binding Specificity:	AA 94-195
Reactivity:	Human
Host:	Rabbit
Clonality:	Polyclonal
Conjugate:	This CEP135 antibody is un-conjugated
Application:	ELISA, Immunofluorescence (IF)

Product Details

Immunogen:	Recombinant Human Centrosomal protein of 135 kDa protein (94-195AA)
Isotype:	IgG
Cross-Reactivity:	Human
Purification:	>95%, Protein G purified

Target Details

Target:	CEP135
Alternative Name:	CEP135 (CEP135 Products)
Background:	Background: Centrosomal protein involved in centriole biogenesis. Acts as a scaffolding protein during early centriole biogenesis. Required for the targeting of centriole satellite proteins to

Target Details

centrosomes such as of PCM1, SSX2IP and CEP290 and recruitment of WRAP73 to centrioles. Also required for centriole-centriole cohesion during interphase by acting as a platform protein for CEP250 at the centriole.

Aliases: centrosomal protein 135 kDa antibody, centrosomal protein 135 kDa antibody, Centrosomal protein 4 antibody, Centrosomal protein of 135 kDa antibody, centrosome protein 4 antibody, centrosome protein cep135 antibody, Cep135 antibody, CEP4 antibody, CP135_HUMAN antibody

UniProt: [Q66GS9](#)

Pathways: [M Phase](#), [SARS-CoV-2 Protein Interactome](#)

Application Details

Application Notes: Recommended dilution: IF:1:50-1:200,

Restrictions: For Research Use only

Handling

Format: Liquid

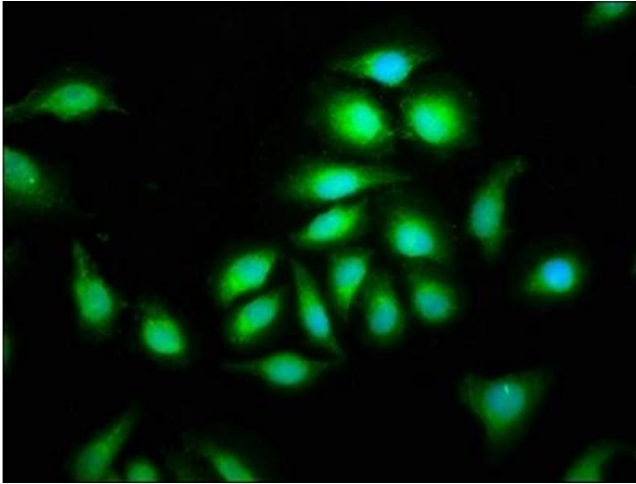
Buffer: Preservative: 0.03 % Proclin 300
Constituents: 50 % Glycerol, 0.01M PBS, pH 7.4

Preservative: ProClin

Precaution of Use: This product contains ProClin: a POISONOUS AND HAZARDOUS SUBSTANCE which should be handled by trained staff only.

Storage: -20 °C,-80 °C

Storage Comment: Upon receipt, store at -20°C or -80°C. Avoid repeated freeze.



Immunofluorescence

Image 1. Immunofluorescence staining of A549 cells with ABIN7147387 at 1:100, counter-stained with DAPI. The cells were fixed in 4% formaldehyde, permeabilized using 0.2% Triton X-100 and blocked in 10% normal Goat Serum. The cells were then incubated with the antibody overnight at 4°C. The secondary antibody was Alexa Fluor 488-conjugated AffiniPure Goat Anti-Rabbit IgG(H+L).