



[Go to Product page](#)

Datasheet for ABIN7147391

anti-CEP164 antibody (AA 1-112)

1 Image

Overview

Quantity:	100 µg
Target:	CEP164
Binding Specificity:	AA 1-112
Reactivity:	Human
Host:	Rabbit
Clonality:	Polyclonal
Conjugate:	This CEP164 antibody is un-conjugated
Application:	Immunohistochemistry (IHC), ELISA

Product Details

Immunogen:	Recombinant Human Centrosomal protein of 164 kDa protein (1-112AA)
Isotype:	IgG
Cross-Reactivity:	Human
Purification:	>95%, Protein G purified

Target Details

Target:	CEP164
Alternative Name:	CEP164 (CEP164 Products)
Background:	Background: Plays a role in microtubule organization and/or maintenance for the formation of primary cilia (PC), a microtubule-based structure that protrudes from the surface of epithelial

Target Details

cells. Plays a critical role in G2/M checkpoint and nuclear divisions. A key player in the DNA damage-activated ATR/ATM signaling cascade since it is required for the proper phosphorylation of H2AX, RPA, CHEK2 and CHEK1. Plays a critical role in chromosome segregation, acting as a mediator required for the maintenance of genomic stability through modulation of MDC1, RPA and CHEK1.

Aliases: AI450905 antibody, BC027092 antibody, CE164_HUMAN antibody, Centrosomal protein 164 antibody, Centrosomal protein 164 kDa antibody, Centrosomal protein of 164 kDa antibody, Cep164 antibody, D030051D21 antibody, FLJ54767 antibody, KIAA1052 antibody, MGC38792 antibody, mKIAA1052 antibody, NPHP15 antibody, OTTMUSP00000042044 antibody, RGD1560988 antibody, RGD1561243 antibody

UniProt: [Q9UPV0](#)

Pathways: [M Phase](#)

Application Details

Application Notes: Recommended dilution: IHC:1:500-1:1000,

Restrictions: For Research Use only

Handling

Format: Liquid

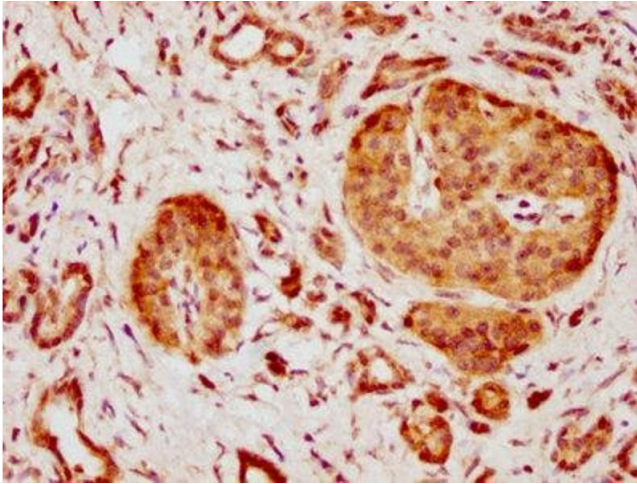
Buffer: Preservative: 0.03 % Proclin 300
Constituents: 50 % Glycerol, 0.01M PBS, pH 7.4

Preservative: ProClin

Precaution of Use: This product contains ProClin: a POISONOUS AND HAZARDOUS SUBSTANCE which should be handled by trained staff only.

Storage: -20 °C,-80 °C

Storage Comment: Upon receipt, store at -20°C or -80°C. Avoid repeated freeze.



Immunohistochemistry

Image 1. IHC image of ABIN7147391 diluted at 1:600 and staining in paraffin-embedded human pancreatic cancer performed on a Leica Bond™ system. After dewaxing and hydration, antigen retrieval was mediated by high pressure in a citrate buffer (pH 6.0). Section was blocked with 10 % normal goat serum 30 min at RT. Then primary antibody (1 % BSA) was incubated at 4 °C overnight. The primary is detected by a biotinylated secondary antibody and visualized using an HRP conjugated SP system.