



[Go to Product page](#)

Datasheet for ABIN7147399

anti-CEP192 antibody (AA 447-711)

2 Images

Overview

Quantity:	100 µg
Target:	CEP192
Binding Specificity:	AA 447-711
Reactivity:	Human
Host:	Rabbit
Clonality:	Polyclonal
Conjugate:	This CEP192 antibody is un-conjugated
Application:	ELISA, Immunofluorescence (IF), Immunohistochemistry (IHC)

Product Details

Immunogen:	Recombinant Human Centrosomal protein of 192 kDa protein (447-711AA)
Isotype:	IgG
Cross-Reactivity:	Human
Purification:	>95%, Protein G purified

Target Details

Target:	CEP192
Alternative Name:	CEP192 (CEP192 Products)
Background:	Background: Required for mitotic centrosome and spindle assembly. Appears to be a major regulator of pericentriolar material (PCM) recruitment, centrosome maturation, and centriole

Target Details

duplication.

Aliases: CEP192 antibody, KIAA1569 antibody, PP8407Centrosomal protein of 192 kDa antibody, Cep192 antibody, Cep192/SPD-2 antibody

UniProt: [Q8TEP8](#)

Application Details

Application Notes: Recommended dilution: IHC:1:20-1:200, IF:1:50-1:200,

Restrictions: For Research Use only

Handling

Format: Liquid

Buffer: Preservative: 0.03 % Proclin 300
Constituents: 50 % Glycerol, 0.01M PBS, PH 7.4

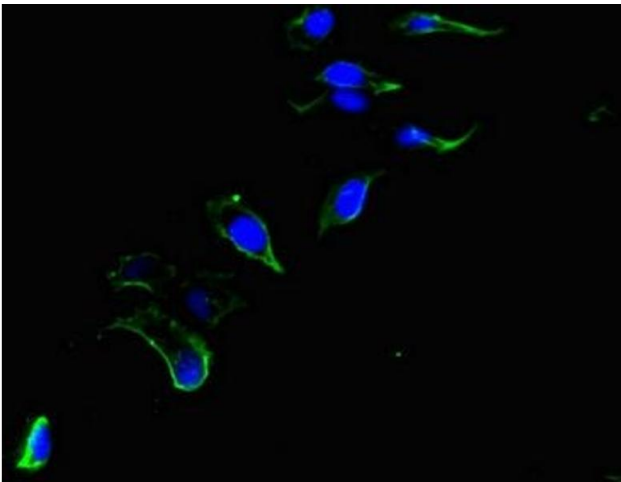
Preservative: ProClin

Precaution of Use: This product contains ProClin: a POISONOUS AND HAZARDOUS SUBSTANCE which should be handled by trained staff only.

Storage: -20 °C,-80 °C

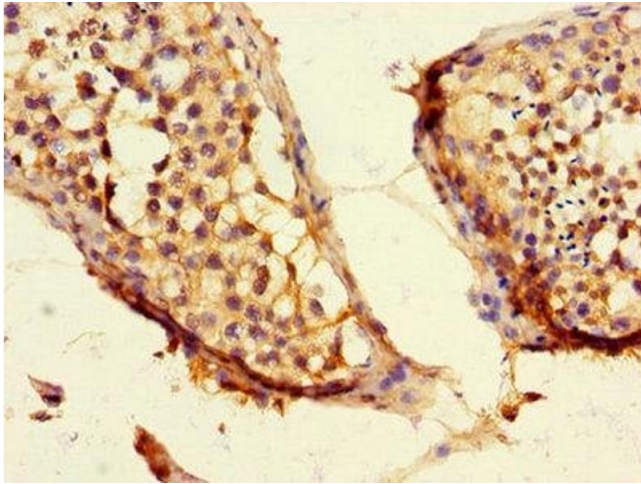
Storage Comment: Upon receipt, store at -20°C or -80°C. Avoid repeated freeze.

Images



Immunofluorescence

Image 1. Immunofluorescent analysis of HeLa cells using ABIN7147399 at dilution of 1:100 and Alexa Fluor 488-conjugated AffiniPure Goat Anti-Rabbit IgG(H+L)



Immunohistochemistry

Image 2. Immunohistochemistry of paraffin-embedded human testis tissue using ABIN7147399 at dilution of 1:100