



[Go to Product page](#)

Datasheet for ABIN7147407
anti-CEP44 antibody (AA 1-280)

3 Images

Overview

Quantity:	100 µL
Target:	CEP44
Binding Specificity:	AA 1-280
Reactivity:	Human
Host:	Rabbit
Clonality:	Polyclonal
Conjugate:	This CEP44 antibody is un-conjugated
Application:	Western Blotting (WB), ELISA, Immunohistochemistry (IHC)

Product Details

Immunogen:	Recombinant Human Centrosomal protein of 44 kDa protein (1-280AA)
Isotype:	IgG
Cross-Reactivity:	Human
Purification:	Antigen Affinity Purified

Target Details

Target:	CEP44
Alternative Name:	CEP44 (CEP44 Products)
Background:	Background: centrosome, midbody, spindle pole Aliases: CEP44 antibody, KIAA1712 antibody, Centrosomal protein of 44 kDa antibody, Cep44

Target Details

antibody, HBV PreS1-transactivated protein 3 antibody, PS1TP3 antibody

UniProt: [Q9C0F1](#)

Application Details

Application Notes: Recommended dilution: WB:1:1000-1:5000, IHC:1:20-1:200,

Restrictions: For Research Use only

Handling

Format: Liquid

Buffer: PBS with 0.02 % sodium azide, 50 % glycerol, pH 7.3.

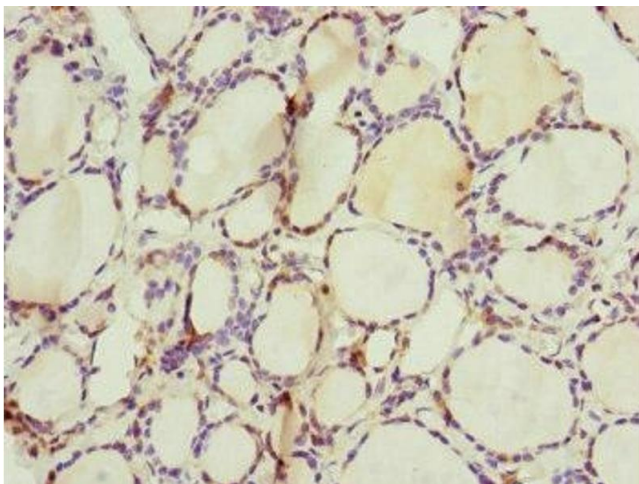
Preservative: Sodium azide

Precaution of Use: This product contains Sodium azide: a POISONOUS AND HAZARDOUS SUBSTANCE which should be handled by trained staff only.

Storage: -20 °C,-80 °C

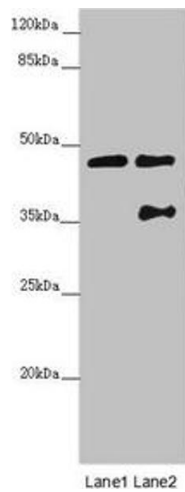
Storage Comment: Upon receipt, store at -20°C or -80°C. Avoid repeated freeze.

Images



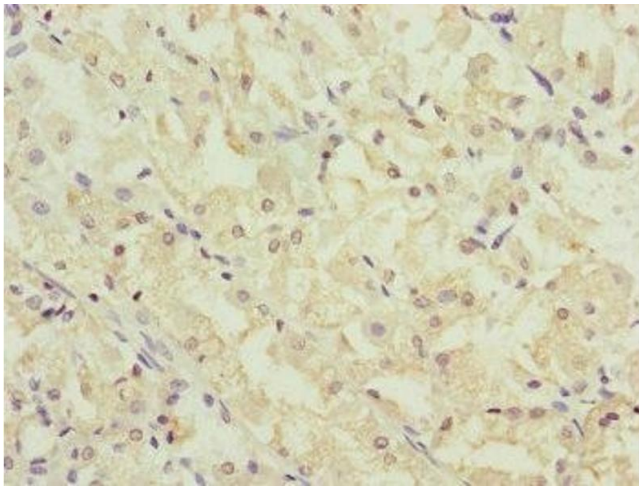
Immunohistochemistry

Image 1. Immunohistochemistry of paraffin-embedded human thyroid tissue using ABIN7147407 at dilution of 1:100



Western Blotting

Image 2. Western blot All lanes: CEP44 antibody at 3.09 μ g/mL Lane 1: Jurkat whole cell lysate Lane 2: MCF-7 whole cell lysate Secondary Goat polyclonal to rabbit IgG at 1/10000 dilution Predicted band size: 44 kDa Observed band size: 44, 36 kDa



Immunohistochemistry

Image 3. Immunohistochemistry of paraffin-embedded human gastric cancer using ABIN7147407 at dilution of 1:100