



[Go to Product page](#)

Datasheet for ABIN7147410
anti-CEP57 antibody (AA 1-240)

2 Images

Overview

Quantity:	100 µL
Target:	CEP57
Binding Specificity:	AA 1-240
Reactivity:	Human
Host:	Rabbit
Clonality:	Polyclonal
Conjugate:	This CEP57 antibody is un-conjugated
Application:	Western Blotting (WB), ELISA, Immunohistochemistry (IHC)

Product Details

Immunogen:	Recombinant Human Centrosomal protein of 57 kDa protein (1-240AA)
Isotype:	IgG
Cross-Reactivity:	Human
Purification:	Antigen Affinity Purified

Target Details

Target:	CEP57
Alternative Name:	CEP57 (CEP57 Products)
Background:	Background: Centrosomal protein which may be required for microtubule attachment to centrosomes. May act by forming ring-like structures around microtubules. Mediates nuclear

Target Details

translocation and mitogenic activity of the internalized growth factor FGF2, but that of FGF1.
Aliases: Centrosomal protein 57 kDa antibody, Centrosomal protein of 57 kDa antibody, Cep57 antibody, Cep57 protein antibody, CEP57_HUMAN antibody, FGF2 interacting protein antibody, FGF2-interacting protein antibody, KIAA0092 antibody, MVA2 antibody, PIG8 antibody, Proliferation inducing protein 8 antibody, Testis specific protein 57 antibody, Testis-specific protein 57 antibody, Translokine antibody, TSP57 antibody

UniProt: [Q86XR8](#)

Pathways: [M Phase](#), [Maintenance of Protein Location](#), [Protein targeting to Nucleus](#), [Growth Factor Binding](#)

Application Details

Application Notes: Recommended dilution: WB:1:1000-1:5000, IHC:1:20-1:200,

Restrictions: For Research Use only

Handling

Format: Liquid

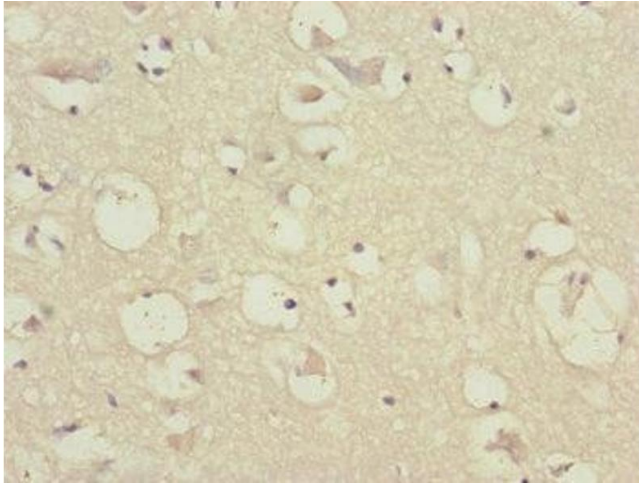
Buffer: PBS with 0.02 % sodium azide, 50 % glycerol, pH 7.3.

Preservative: Sodium azide

Precaution of Use: This product contains Sodium azide: a POISONOUS AND HAZARDOUS SUBSTANCE which should be handled by trained staff only.

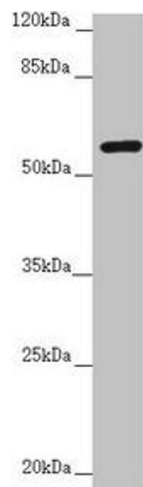
Storage: -20 °C,-80 °C

Storage Comment: Upon receipt, store at -20°C or -80°C. Avoid repeated freeze.



Immunohistochemistry

Image 1. Immunohistochemistry of paraffin-embedded human brain tissue using ABIN7147410 at dilution of 1:100



Western Blotting

Image 2. Western blot All lanes: CEP57 antibody at 3.83 μ g/mL + CEM whole cell lysate Secondary Goat polyclonal to rabbit IgG at 1/10000 dilution Predicted band size: 58, 55, 32, 57 kDa Observed band size: 58 kDa