

Datasheet for ABIN7147445  
**anti-POC5 antibody (AA 373-485)**[Go to Product page](#)

## 1 Image

## Overview

Quantity:	100 µg
Target:	POC5
Binding Specificity:	AA 373-485
Reactivity:	Human
Host:	Rabbit
Clonality:	Polyclonal
Conjugate:	This POC5 antibody is un-conjugated
Application:	ELISA, Immunohistochemistry (IHC)

## Product Details

Immunogen:	Recombinant Human Centrosomal protein POC5 protein (373-485AA)
Isotype:	IgG
Cross-Reactivity:	Human
Purification:	>95%, Protein G purified

## Target Details

Target:	POC5
Alternative Name:	POC5 ( <a href="#">POC5 Products</a> )
Background:	Background: Essential for the assembly of the distal half of centrioles, required for centriole elongation.

## Target Details

Aliases: C5orf37 antibody, Centrosomal protein POC5 antibody, FLJ35779 antibody, hPOC5 antibody, MGC120442 antibody, MGC120443 antibody, MGC120444 antibody, OTTHUMP00000222116 antibody, OTTHUMP00000222453 antibody, Poc5 antibody, POC5 centriolar protein antibody, POC5 centriolar protein homolog (Chlamydomonas) antibody, POC5 centriolar protein homolog antibody, POC5\_HUMAN antibody, Protein of centriole 5 antibody, Proteome of centriole 5 antibody

UniProt: [Q8NA72](#)

## Application Details

Application Notes: Recommended dilution: IHC:1:200-1:500,

Restrictions: For Research Use only

## Handling

Format: Liquid

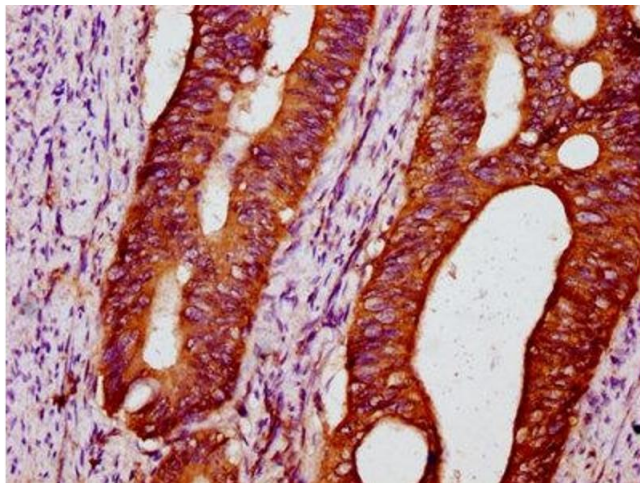
Buffer: Preservative: 0.03 % Proclin 300  
Constituents: 50 % Glycerol, 0.01M PBS, pH 7.4

Preservative: ProClin

Precaution of Use: This product contains ProClin: a POISONOUS AND HAZARDOUS SUBSTANCE which should be handled by trained staff only.

Storage: -20 °C, -80 °C

Storage Comment: Upon receipt, store at -20°C or -80°C. Avoid repeated freeze.



#### Immunohistochemistry

**Image 1.** IHC image of ABIN7147445 diluted at 1:300 and staining in paraffin-embedded human colon cancer performed on a Leica Bond™ system. After dewaxing and hydration, antigen retrieval was mediated by high pressure in a citrate buffer (pH 6.0). Section was blocked with 10% normal goat serum 30min at RT. Then primary antibody (1% BSA) was incubated at 4°C overnight. The primary is detected by a biotinylated secondary antibody and visualized using an HRP conjugated SP system.