

Datasheet for ABIN7147463
anti-LASS1 antibody (AA 1-52)[Go to Product page](#)

2 Images

Overview

Quantity:	100 µg
Target:	LASS1 (CERS1)
Binding Specificity:	AA 1-52
Reactivity:	Human
Host:	Rabbit
Clonality:	Polyclonal
Conjugate:	This LASS1 antibody is un-conjugated
Application:	Western Blotting (WB), ELISA, Immunohistochemistry (IHC)

Product Details

Immunogen:	Recombinant Human Ceramide synthase 1 protein (1-52AA)
Isotype:	IgG
Cross-Reactivity:	Human, Rat
Purification:	>95%, Protein G purified

Target Details

Target:	LASS1 (CERS1)
Alternative Name:	CERS1 (CERS1 Products)
Background:	Background: May be either a bona fide (dihydro)ceramide synthase or a modulator of its activity. When overexpressed in cells is involved in the production of sphingolipids containing

Target Details

mainly one fatty acid donor (N-linked stearyl- (C18) ceramide) in a fumonisin B1-independent manner (By similarity).

Aliases: Ceramide synthase 1 antibody, CerS1 antibody, CERS1_HUMAN antibody, LAG1 antibody, LAG1 homolog ceramide synthase 1 antibody, LAG1 longevity assurance homolog 1 antibody, LASS 1 antibody, LASS1 antibody, Longevity assurance (LAG1 *S. cerevisiae*) homolog 1 antibody, Longevity assurance gene 1 antibody, Longevity assurance gene 1 protein homolog 1 antibody, MGC90349 antibody, Protein LAG1 antibody, Protein UOG 1 antibody, Protein UOG-1 antibody, UOG 1 protein antibody, UOG1 antibody, Upstream of GDF1 antibody

UniProt: [P27544](#)

Application Details

Application Notes: Recommended dilution: WB:1:500-1:5000, IHC:1:20-1:200,

Restrictions: For Research Use only

Handling

Format: Liquid

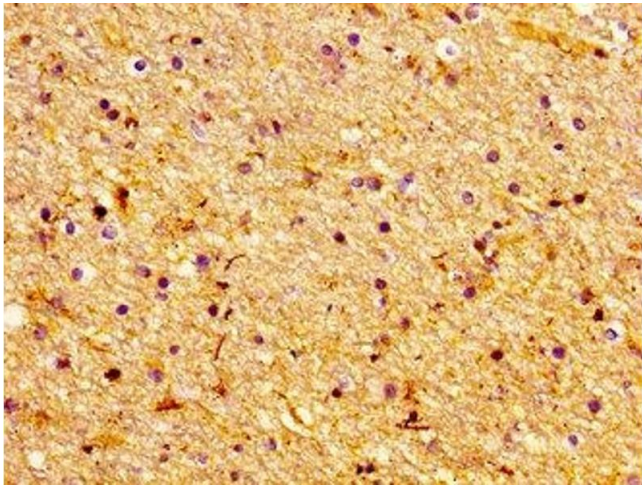
Buffer: Preservative: 0.03 % Proclin 300
Constituents: 50 % Glycerol, 0.01M PBS, pH 7.4

Preservative: ProClin

Precaution of Use: This product contains ProClin: a POISONOUS AND HAZARDOUS SUBSTANCE which should be handled by trained staff only.

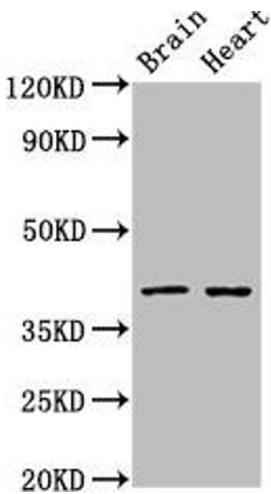
Storage: -20 °C,-80 °C

Storage Comment: Upon receipt, store at -20°C or -80°C. Avoid repeated freeze.



Immunohistochemistry

Image 1. Immunohistochemistry of paraffin-embedded human brain tissue using ABIN7147463 at dilution of 1:100



Western Blotting

Image 2. Western Blot Positive WB detected in: Rat brain tissue, Rat heart tissue All lanes: CERS1 antibody at 3 μ g/mL Secondary Goat polyclonal to rabbit IgG at 1/50000 dilution Predicted band size: 40, 38 kDa Observed band size: 40 kDa