

Datasheet for ABIN7147479
anti-GLTPD1 antibody (AA 1-214)



[Go to Product page](#)

3 Images

Overview

Quantity:	100 µg
Target:	GLTPD1
Binding Specificity:	AA 1-214
Reactivity:	Human
Host:	Rabbit
Clonality:	Polyclonal
Conjugate:	This GLTPD1 antibody is un-conjugated
Application:	ELISA, Immunofluorescence (IF), Immunohistochemistry (IHC)

Product Details

Immunogen:	Recombinant Human Ceramide-1-phosphate transfer protein (1-214AA)
Isotype:	IgG
Cross-Reactivity:	Human
Purification:	>95%, Protein G purified

Target Details

Target:	GLTPD1
Alternative Name:	CPTP (GLTPD1 Products)
Background:	Background: Mediates the intracellular transfer of ceramide-1-phosphate between organelle membranes and the cell membrane. Required for normal structure of the Golgi stacks. Can bind

Target Details

phosphoceramides with a variety of aliphatic chains, but has a preference for lipids with saturated C16:0 or monounsaturated C18:1 aliphatic chains, and is inefficient with phosphoceramides containing lignoceryl (C24:0). Plays a role in the regulation of the cellular levels of ceramide-1-phosphate, and thereby contributes to the regulation of phospholipase PLA2G4A activity and the release of arachidonic acid. Has no activity with galactosylceramide, lactosylceramide, sphingomyelin, phosphatidylcholine, phosphatidic acid and ceramide. Aliases: Ceramide-1-phosphate transfer protein antibody, CPTP antibody, CPTP_HUMAN antibody, gltpd1 antibody, Glycolipid transfer protein domain-containing protein 1 antibody

UniProt: [Q5TA50](#)

Application Details

Application Notes: Recommended dilution: IHC:1:200-1:500, IF:1:50-1:200,

Restrictions: For Research Use only

Handling

Format: Liquid

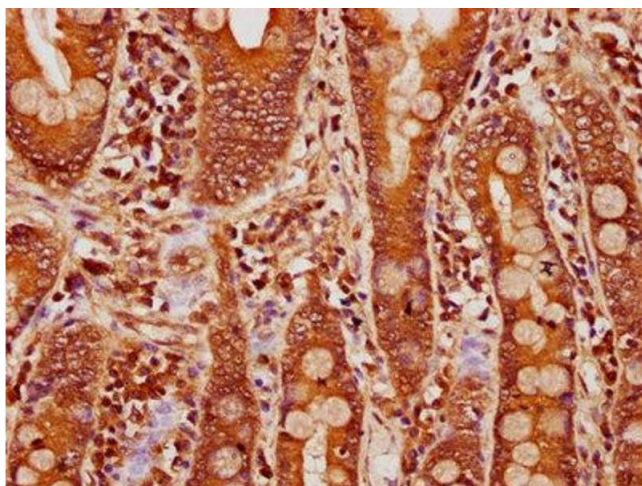
Buffer: Preservative: 0.03 % Proclin 300
Constituents: 50 % Glycerol, 0.01M PBS, pH 7.4

Preservative: ProClin

Precaution of Use: This product contains ProClin: a POISONOUS AND HAZARDOUS SUBSTANCE which should be handled by trained staff only.

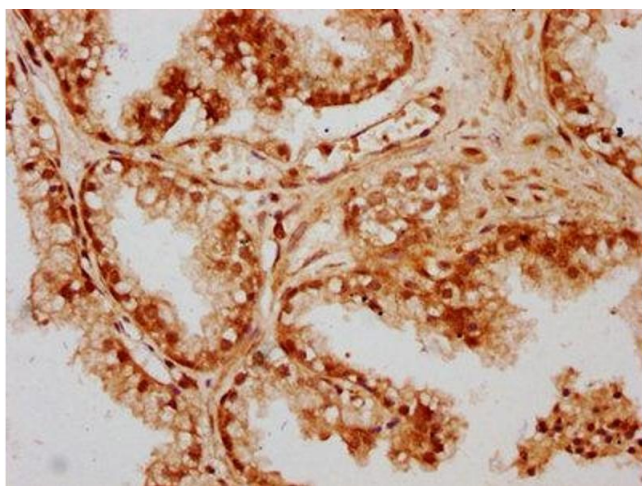
Storage: -20 °C,-80 °C

Storage Comment: Upon receipt, store at -20°C or -80°C. Avoid repeated freeze.



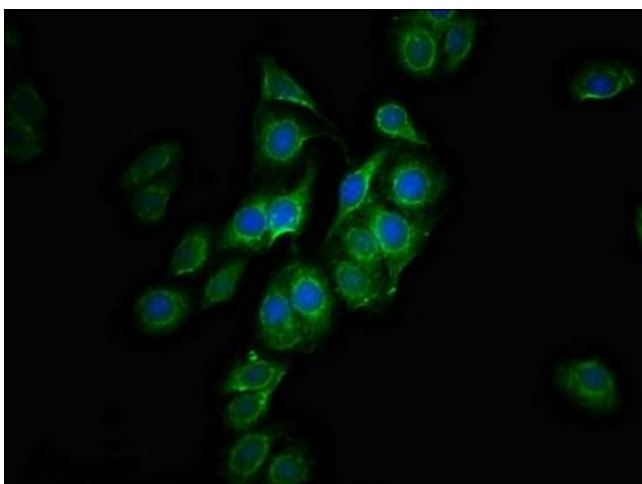
Immunohistochemistry

Image 1. IHC image of ABIN7147479 diluted at 1:300 and staining in paraffin-embedded human small intestine tissue performed on a Leica Bond™ system. After dewaxing and hydration, antigen retrieval was mediated by high pressure in a citrate buffer (pH 6.0). Section was blocked with 10% normal goat serum 30min at RT. Then primary antibody (1% BSA) was incubated at 4°C overnight. The primary is detected by a biotinylated secondary antibody and visualized using an HRP conjugated SP system.



Immunohistochemistry

Image 2. IHC image of ABIN7147479 diluted at 1:300 and staining in paraffin-embedded human prostate cancer performed on a Leica Bond™ system. After dewaxing and hydration, antigen retrieval was mediated by high pressure in a citrate buffer (pH 6.0). Section was blocked with 10% normal goat serum 30min at RT. Then primary antibody (1% BSA) was incubated at 4°C overnight. The primary is detected by a biotinylated secondary antibody and visualized using an HRP conjugated SP system.



Immunofluorescence

Image 3. Immunofluorescence staining of HepG2 cells with ABIN7147479 at 1:100, counter-stained with DAPI. The cells were fixed in 4% formaldehyde, permeabilized using 0.2% Triton X-100 and blocked in 10% normal Goat Serum. The cells were then incubated with the antibody overnight at 4°C. The secondary antibody was Alexa Fluor 488-conjugated AffiniPure Goat Anti-Rabbit IgG(H+L).