



[Go to Product page](#)

Datasheet for ABIN7147488
anti-CDR2L antibody (AA 376-465)

2 Images

Overview

Quantity:	100 µg
Target:	CDR2L
Binding Specificity:	AA 376-465
Reactivity:	Human
Host:	Rabbit
Clonality:	Polyclonal
Conjugate:	This CDR2L antibody is un-conjugated
Application:	ELISA, Western Blotting (WB), Immunohistochemistry (IHC)

Product Details

Immunogen:	Recombinant Human Cerebellar degeneration-related protein 2-like protein (376-465AA)
Isotype:	IgG
Cross-Reactivity:	Human
Purification:	>95%, Protein G purified

Target Details

Target:	CDR2L
Alternative Name:	CDR2L (CDR2L Products)
Background:	Cdr2l antibody, CDR2L_HUMAN antibody, Cerebellar degeneration-related protein 2-like antibody, Gm21 antibody, Paraneoplastic 62 kDa antigen antibody

Target Details

UniProt: [Q86X02](#)

Application Details

Application Notes: Recommended dilution: WB:1:500-1:5000, IHC:1:200-1:500,

Restrictions: For Research Use only

Handling

Format: Liquid

Buffer: Preservative: 0.03 % Proclin 300
Constituents: 50 % Glycerol, 0.01M PBS, pH 7.4

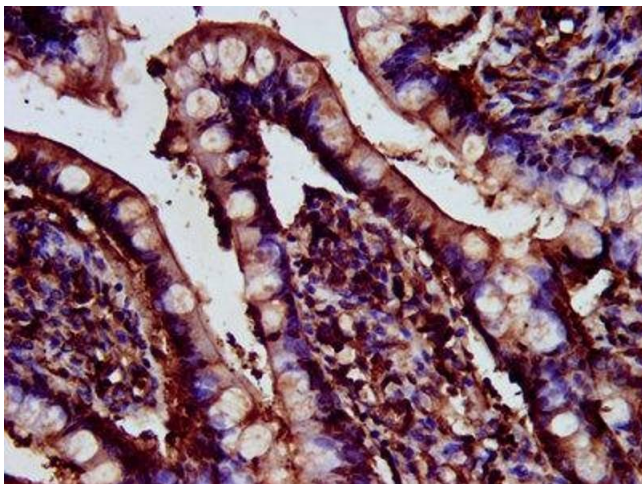
Preservative: ProClin

Precaution of Use: This product contains ProClin: a POISONOUS AND HAZARDOUS SUBSTANCE which should be handled by trained staff only.

Storage: -20 °C,-80 °C

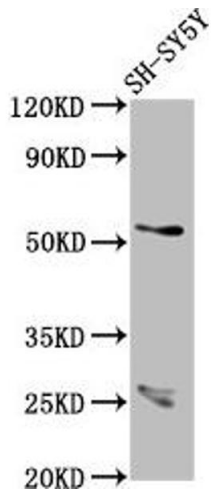
Storage Comment: Upon receipt, store at -20°C or -80°C. Avoid repeated freeze.

Images



Immunohistochemistry

Image 1. IHC image of ABIN7147488 diluted at 1:200 and staining in paraffin-embedded human small intestine tissue performed on a Leica Bond™ system. After dewaxing and hydration, antigen retrieval was mediated by high pressure in a citrate buffer (pH 6.0). Section was blocked with 10 % normal goat serum 30 min at RT. Then primary antibody (1 % BSA) was incubated at 4 °C overnight. The primary is detected by a biotinylated secondary antibody and visualized using an HRP conjugated SP system.



Western Blotting

Image 2. Western Blot Positive WB detected in: SH-SY5Y whole cell lysate All lanes: CDR2L antibody at 7.1 $\mu\text{g}/\text{mL}$ Secondary Goat polyclonal to rabbit IgG at 1/50000 dilution Predicted band size: 54 kDa Observed band size: 54 kDa