

Datasheet for ABIN7147519
anti-CHMP2A antibody (AA 1-222)[Go to Product page](#)

2 Images

Overview

Quantity:	100 µg
Target:	CHMP2A
Binding Specificity:	AA 1-222
Reactivity:	Human
Host:	Rabbit
Clonality:	Polyclonal
Conjugate:	This CHMP2A antibody is un-conjugated
Application:	Western Blotting (WB), ELISA, Immunohistochemistry (IHC)

Product Details

Immunogen:	Recombinant Human Charged multivesicular body protein 2a protein (1-222AA)
Isotype:	IgG
Cross-Reactivity:	Human
Purification:	>95%, Protein G purified

Target Details

Target:	CHMP2A
Alternative Name:	CHMP2A (CHMP2A Products)
Background:	Background: Probable core component of the endosomal sorting required for transport complex III (ESCRT-III) which is involved in multivesicular bodies (MVBs) formation and sorting

Target Details

of endosomal cargo proteins into MVBs. MVBs contain intraluminal vesicles (ILVs) that are generated by invagination and scission from the limiting membrane of the endosome and mostly are delivered to lysosomes enabling degradation of membrane proteins, such as stimulated growth factor receptors, lysosomal enzymes and lipids. The MVB pathway appears to require the sequential function of ESCRT-O, -I, -II and -III complexes. ESCRT-III proteins mostly dissociate from the invaginating membrane before the ILV is released. The ESCRT machinery also functions in topologically equivalent membrane fission events, such as the terminal stages of cytokinesis (PubMed:21310966). Together with SPAST, the ESCRT-III complex promotes nuclear envelope sealing and mitotic spindle disassembly during late anaphase (PubMed:26040712). ESCRT-III proteins are believed to mediate the necessary vesicle extrusion and/or membrane fission activities, possibly in conjunction with the AAA ATPase VPS4.

Aliases: BC 2 antibody, BC2 antibody, Charged multivesicular body protein 2a antibody, CHM2A_HUMAN antibody, CHMP2 antibody, CHMP2a antibody, Chromatin modifying protein 2a antibody, Chromatin-modifying protein 2a antibody, hVps2 1 antibody, hVps2-1 antibody, putative breast adenocarcinoma marker antibody, Putative breast adenocarcinoma marker BC-2 antibody, Putative breast adenocarcinoma marker BC2 antibody, Vacuolar protein sorting associated protein 2 1 antibody, Vacuolar protein sorting-associated protein 2-1 antibody, Vps2 1 antibody, VPS2 antibody, Vps2-1 antibody, VPS2A antibody

UniProt: [O43633](#)

Pathways: [SARS-CoV-2 Protein Interactome](#)

Application Details

Application Notes: Recommended dilution: WB:1:1000-1:5000, IHC:1:20-1:200,

Restrictions: For Research Use only

Handling

Format: Liquid

Buffer: Preservative: 0.03 % Proclin 300
Constituents: 50 % Glycerol, 0.01M PBS, PH 7.4

Preservative: ProClin

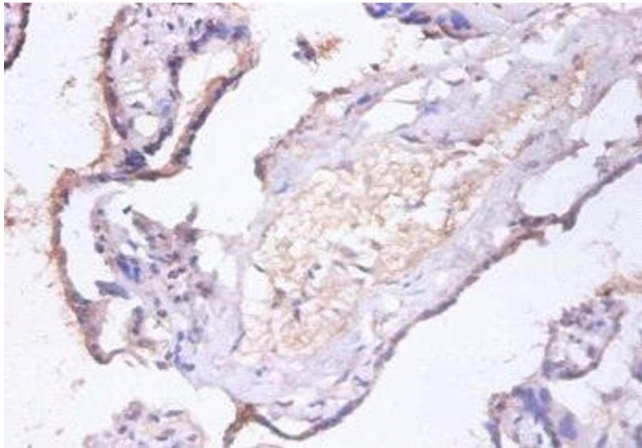
Precaution of Use: This product contains ProClin: a POISONOUS AND HAZARDOUS SUBSTANCE which should be handled by trained staff only.

Handling

Storage: -20 °C, -80 °C

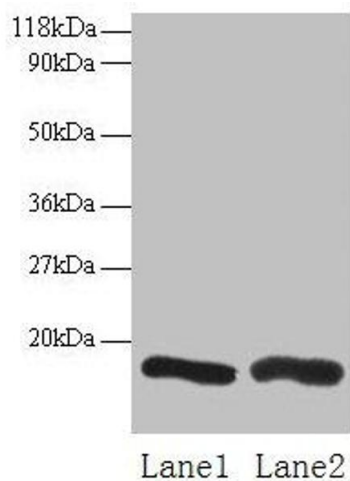
Storage Comment: Upon receipt, store at -20°C or -80°C. Avoid repeated freeze.

Images



Immunohistochemistry

Image 1. Immunohistochemistry of paraffin-embedded human placenta tissue using ABIN7147519 at dilution of 1:100



Western Blotting

Image 2. Western blot All lanes: CHMP2A antibody at 2 μ g/mL Lane 1: EC109 whole cell lysate Lane 2: 293T whole cell lysate Secondary Goat polyclonal to rabbit IgG at 1/15000 dilution Predicted band size: 26 kDa Observed band size: 16 kDa