

Datasheet for ABIN7147541
anti-HUS1 antibody (AA 2-280)

3 Images

[Go to Product page](#)

Overview

Quantity:	100 µg
Target:	HUS1
Binding Specificity:	AA 2-280
Reactivity:	Human
Host:	Rabbit
Clonality:	Polyclonal
Conjugate:	This HUS1 antibody is un-conjugated
Application:	Western Blotting (WB), ELISA, Immunohistochemistry (IHC), Immunofluorescence (IF)

Product Details

Immunogen:	Recombinant Human Checkpoint protein HUS1 protein (2-280AA)
Isotype:	IgG
Cross-Reactivity:	Human
Purification:	>95%, Protein G purified

Target Details

Target:	HUS1
Alternative Name:	HUS1 (HUS1 Products)
Background:	Background: Component of the 9-1-1 cell-cycle checkpoint response complex that plays a major role in DNA repair. The 9-1-1 complex is recruited to DNA lesion upon damage by the

Target Details

RAD17-replication factor C (RFC) clamp loader complex. Acts then as a sliding clamp platform on DNA for several proteins involved in long-patch base excision repair (LP-BER). The 9-1-1 complex stimulates DNA polymerase beta (POLB) activity by increasing its affinity for the 3'\\'-OH end of the primer-template and stabilizes POLB to those sites where LP-BER proceeds, endonuclease FEN1 cleavage activity on substrates with double, nick, or gap flaps of distinct sequences and lengths, and DNA ligase I (LIG1) on long-patch base excision repair substrates. The 9-1-1 complex is necessary for the recruitment of RHN01 to sites of double-stranded breaks (DSB) occurring during the S phase.

Aliases: Checkpoint protein HUS1 antibody, hHUS1 antibody, HUS1 (S. pombe) checkpoint homolog antibody, Hus1 antibody, HUS1 checkpoint homolog (S. pombe) antibody, HUS1 Checkpoint Protein antibody, HUS1 protein antibody, HUS1+ - like protein antibody, HUS1_HUMAN antibody, Hydroxyurea-sensitive 1, S. pombe, homolog of antibody

UniProt: [O60921](#)

Application Details

Application Notes: Recommended dilution: WB:1:500-1:2000, IHC:1:20-1:200, IF:1:50-1:200,

Restrictions: For Research Use only

Handling

Format: Liquid

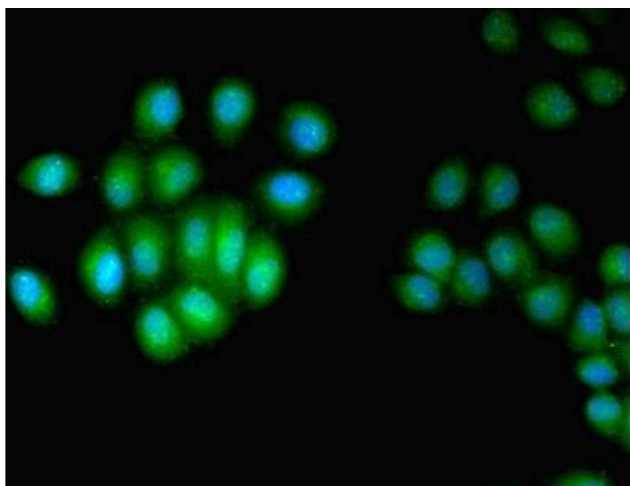
Buffer: Preservative: 0.03 % Proclin 300
Constituents: 50 % Glycerol, 0.01M PBS, PH 7.4

Preservative: ProClin

Precaution of Use: This product contains ProClin: a POISONOUS AND HAZARDOUS SUBSTANCE which should be handled by trained staff only.

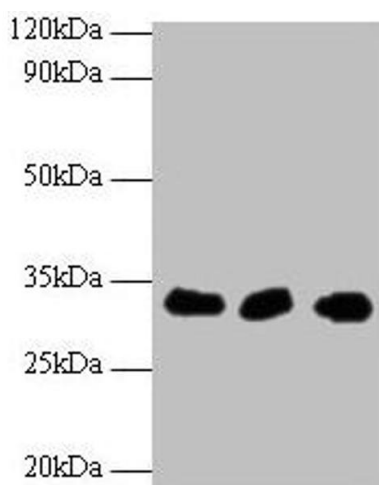
Storage: -20 °C,-80 °C

Storage Comment: Upon receipt, store at -20°C or -80°C. Avoid repeated freeze.



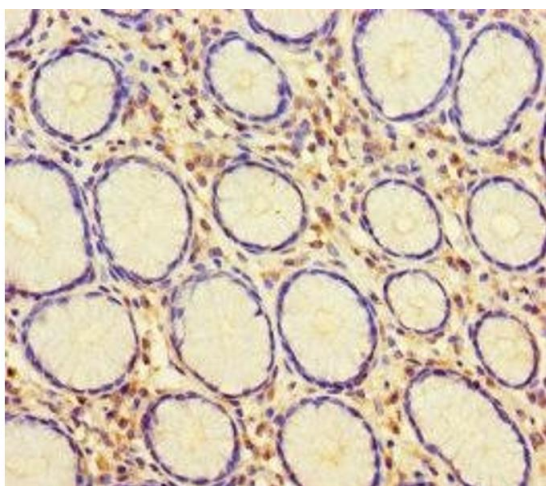
Immunofluorescence

Image 1. Immunofluorescent analysis of A549 cells using ABIN7147541 at dilution of 1:100 and Alexa Fluor 488-conjugated AffiniPure Goat Anti-Rabbit IgG(H+L)



Western Blotting

Image 2. Western blot All lanes: HUS1 antibody at 2 µg/mL
Lane 1: Hela whole cell lysate Lane 2: 293T whole cell lysate
Lane 2: A431 whole cell lysate Secondary Goat polyclonal to rabbit IgG at 1/10000 dilution Predicted band size: 32, 30 kDa Observed band size: 32 kDa



Immunohistochemistry

Image 3. Immunohistochemistry of paraffin-embedded human gastric cancer using ABIN7147541 at dilution of 1:100