

Datasheet for ABIN7147549

anti-CMKLR1 antibody (AA 321-373)**3** Images[Go to Product page](#)

Overview

Quantity:	100 µg
Target:	CMKLR1
Binding Specificity:	AA 321-373
Reactivity:	Human
Host:	Rabbit
Clonality:	Polyclonal
Conjugate:	This CMKLR1 antibody is un-conjugated
Application:	ELISA, Immunohistochemistry (IHC), Immunofluorescence (IF)

Product Details

Immunogen:	Recombinant Human Chemokine-like receptor 1 protein (321-373AA)
Isotype:	IgG
Cross-Reactivity:	Human
Purification:	>95%, Protein G purified

Target Details

Target:	CMKLR1
Alternative Name:	CMKLR1 (CMKLR1 Products)
Background:	Background: Receptor for the chemoattractant adipokine chemerin/RARRES2 and for the omega-3 fatty acid derived molecule resolvin E1. Interaction with RARRES2 induces activation

Target Details

of intracellular signaling molecules, such as SKY, MAPK1/3 (ERK1/2), MAPK14/P38MAPK and PI3K leading to multifunctional effects, like, reduction of immune responses, enhancing of adipogenesis and angiogenesis. Resolvin E1 down-regulates cytokine production in macrophages by reducing the activation of MAPK1/3 (ERK1/2) and NF-kappa-B. Positively regulates adipogenesis and adipocyte metabolism. Acts as a coreceptor for several SIV strains (SIVMAC316, SIVMAC239, SIVMACL7E-FR and SIVSM62A), as well as a primary HIV-1 strain (92UG024-2).

Aliases: CHEMERINR antibody, Chemokine like receptor 1 antibody, Chemokine-like receptor 1 antibody, CHEMR23 antibody, CMKLR1 antibody, CML1_HUMAN antibody, DEZ antibody, G protein coupled receptor ChemR23 antibody, G protein coupled receptor DEZ antibody, G-protein coupled receptor ChemR23 antibody, G-protein coupled receptor DEZ antibody, Orphan G protein coupled receptor antibody, Orphan G protein coupled receptor Dez antibody, Resolvin E1 receptor antibody, RVER1 antibody

UniProt: [Q99788](#)

Application Details

Application Notes: Recommended dilution: IHC:1:20-1:200, IF:1:50-1:200,

Restrictions: For Research Use only

Handling

Format: Liquid

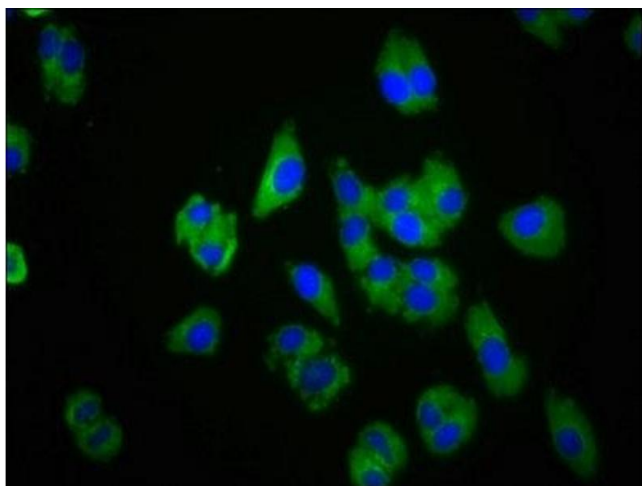
Buffer: Preservative: 0.03 % Proclin 300
Constituents: 50 % Glycerol, 0.01M PBS, pH 7.4

Preservative: ProClin

Precaution of Use: This product contains ProClin: a POISONOUS AND HAZARDOUS SUBSTANCE which should be handled by trained staff only.

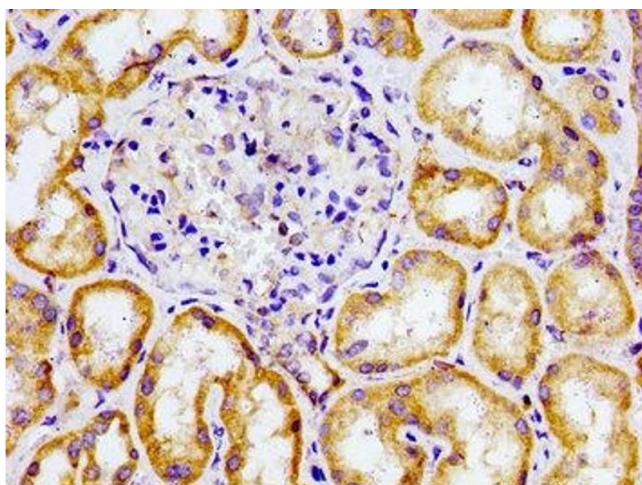
Storage: -20 °C,-80 °C

Storage Comment: Upon receipt, store at -20°C or -80°C. Avoid repeated freeze.



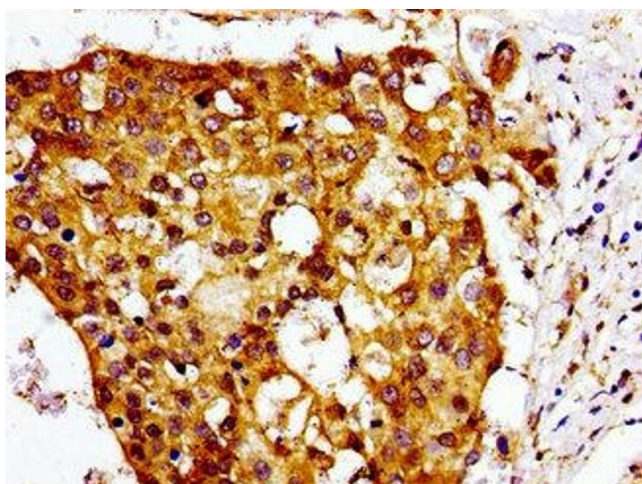
Immunofluorescence

Image 1. Immunofluorescence staining of HepG2 cells with ABIN7147549 at 1:100, counter-stained with DAPI. The cells were fixed in 4% formaldehyde, permeabilized using 0.2% Triton X-100 and blocked in 10% normal Goat Serum. The cells were then incubated with the antibody overnight at 4°C. The secondary antibody was Alexa Fluor 488-conjugated AffiniPure Goat Anti-Rabbit IgG(H+L).



Immunohistochemistry

Image 2. Immunohistochemistry of paraffin-embedded human kidney tissue using ABIN7147549 at dilution of 1:100



Immunohistochemistry

Image 3. Immunohistochemistry of paraffin-embedded human breast cancer using ABIN7147549 at dilution of 1:100