



[Go to Product page](#)

Datasheet for ABIN7147557
anti-CHI3L2 antibody (AA 27-390)

1 Image

Overview

Quantity:	100 µg
Target:	CHI3L2
Binding Specificity:	AA 27-390
Reactivity:	Human
Host:	Rabbit
Clonality:	Polyclonal
Conjugate:	This CHI3L2 antibody is un-conjugated
Application:	ELISA, Immunohistochemistry (IHC)

Product Details

Immunogen:	Recombinant Human Chitinase-3-like protein 2 protein (27-390AA)
Isotype:	IgG
Cross-Reactivity:	Human
Purification:	>95%, Protein G purified

Target Details

Target:	CHI3L2
Alternative Name:	CHI3L2 (CHI3L2 Products)
Background:	Background: Lectin that binds chitooligosaccharides and other glycans with high affinity, but not heparin. Has no chitinase activity.

Target Details

Aliases: CH3L2_HUMAN antibody, CHI3L2 antibody, Chitinase 3 like 2 antibody, Chitinase-3-like protein 2 antibody, Chondrocyte protein 39 antibody, OTTHUMP00000014028 antibody, YKL 39 antibody, YKL-39 antibody, YKL39 antibody

UniProt: [Q15782](#)

Application Details

Application Notes: Recommended dilution: IHC:1:200-1:500,

Restrictions: For Research Use only

Handling

Format: Liquid

Buffer: Preservative: 0.03 % Proclin 300
Constituents: 50 % Glycerol, 0.01M PBS, PH 7.4

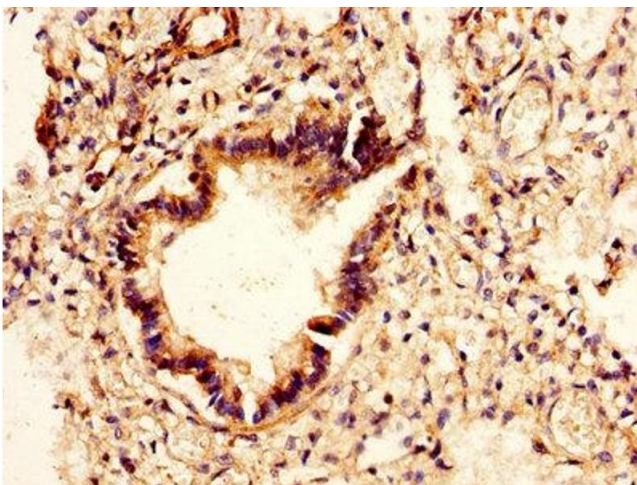
Preservative: ProClin

Precaution of Use: This product contains ProClin: a POISONOUS AND HAZARDOUS SUBSTANCE which should be handled by trained staff only.

Storage: -20 °C,-80 °C

Storage Comment: Upon receipt, store at -20°C or -80°C. Avoid repeated freeze.

Images



Immunohistochemistry

Image 1. IHC image of ABIN7147557 diluted at 1:400 and staining in paraffin-embedded human lung tissue performed on a Leica Bond™ system. After dewaxing and hydration, antigen retrieval was mediated by high pressure in a citrate buffer (pH 6.0). Section was blocked with 10% normal goat serum 30min at RT. Then primary antibody (1% BSA) was incubated at 4°C overnight. The primary is detected by a biotinylated secondary antibody and visualized using an HRP conjugated SP system.