

Datasheet for ABIN7147565

anti-Chitotriosidase 1 antibody (AA 215-430)[Go to Product page](#)**1** Image

Overview

Quantity:	100 µL
Target:	Chitotriosidase 1 (CHIT1)
Binding Specificity:	AA 215-430
Reactivity:	Human
Host:	Rabbit
Clonality:	Polyclonal
Conjugate:	This Chitotriosidase 1 antibody is un-conjugated
Application:	Immunohistochemistry (IHC), ELISA

Product Details

Immunogen:	Recombinant Human Chitotriosidase-1 protein (215-430aa)
Isotype:	IgG
Cross-Reactivity:	Human
Purification:	>95%, Protein G purified

Target Details

Target:	Chitotriosidase 1 (CHIT1)
Alternative Name:	CHIT1 (CHIT1 Products)
Background:	Background: Degrades chitin, chitotriose and chitobiose. May participate in the defense against nematodes and other pathogens. Isoform 3 has no enzymatic activity.

Target Details

Aliases: Chitotriosidase-1 (EC 3.2.1.14) (Chitinase-1), CHIT1

UniProt: [Q13231](#)

Application Details

Application Notes: Recommended dilution: IHC:1:100-1:500,

Restrictions: For Research Use only

Handling

Format: Liquid

Buffer: Preservative: 0.03 % Proclin 300
Constituents: 50 % Glycerol, 0.01M PBS, pH 7.4

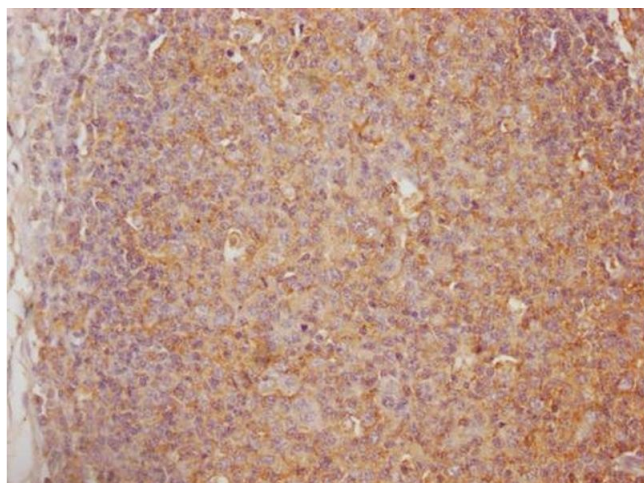
Preservative: ProClin

Precaution of Use: This product contains ProClin: a POISONOUS AND HAZARDOUS SUBSTANCE which should be handled by trained staff only.

Storage: -20 °C, -80 °C

Storage Comment: Upon receipt, store at -20°C or -80°C. Avoid repeated freeze.

Images



Immunohistochemistry

Image 1. IHC image of ABIN7147565 diluted at 1:100 and staining in paraffin-embedded human lymph node tissue performed on a Leica Bond™ system. After dewaxing and hydration, antigen retrieval was mediated by high pressure in a citrate buffer (pH 6.0). Section was blocked with 10 % normal goat serum 30 min at RT. Then primary antibody (1 % BSA) was incubated at 4 °C overnight. The primary is detected by a Goat anti-rabbit polymer IgG labeled by HRP and visualized using 0.05 % DAB.