

Datasheet for ABIN7147581
anti-CLCNKB antibody (AA 538-687)[Go to Product page](#)

3 Images

Overview

Quantity:	100 µg
Target:	CLCNKB
Binding Specificity:	AA 538-687
Reactivity:	Human
Host:	Rabbit
Clonality:	Polyclonal
Conjugate:	This CLCNKB antibody is un-conjugated
Application:	Western Blotting (WB), ELISA, Immunohistochemistry (IHC), Immunofluorescence (IF)

Product Details

Immunogen:	Recombinant Human Chloride channel protein CLC-Kb protein (538-687AA)
Isotype:	IgG
Cross-Reactivity:	Human, Rat
Purification:	>95%, Protein G purified

Target Details

Target:	CLCNKB
Alternative Name:	CLCNKB (CLCNKB Products)
Background:	Background: Voltage-gated chloride channel. Chloride channels have several functions including the regulation of cell volume, membrane potential stabilization, signal transduction

Target Details

and transepithelial transport. May be important in urinary concentrating mechanisms.

Aliases: Bartter syndrome type 3 antibody, Chloride channel Kb antibody, Chloride channel kidney B antibody, Chloride channel protein ClC-Kb antibody, Chloride channel voltage sensitive Kb antibody, ClC K2 antibody, ClC-K2 antibody, ClCK2 antibody, CLCKB antibody, CLCKB_HUMAN antibody, CLCNKB antibody, hClC Kb antibody, hClCKb antibody, MGC24087 antibody, OTTHUMP00000011120 antibody, OTTHUMP00000011121 antibody, RP11 5P18.8 antibody

UniProt: [P51801](#)

Application Details

Application Notes: Recommended dilution: WB:1:500-1:5000, IHC:1:200-1:500, IF:1:50-1:200,

Restrictions: For Research Use only

Handling

Format: Liquid

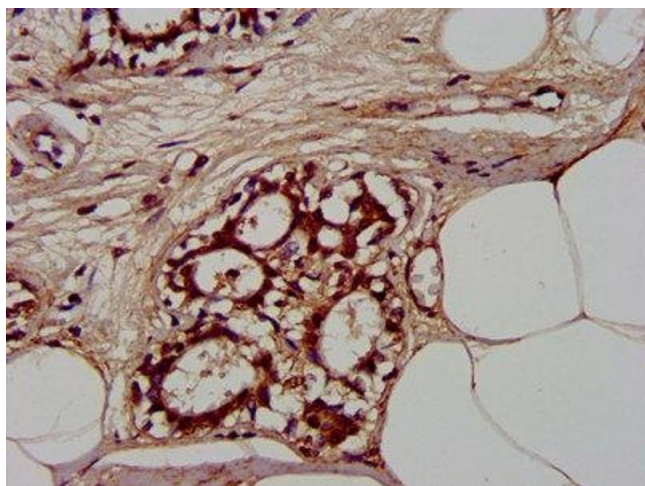
Buffer: Preservative: 0.03 % Proclin 300
Constituents: 50 % Glycerol, 0.01M PBS, pH 7.4

Preservative: ProClin

Precaution of Use: This product contains ProClin: a POISONOUS AND HAZARDOUS SUBSTANCE which should be handled by trained staff only.

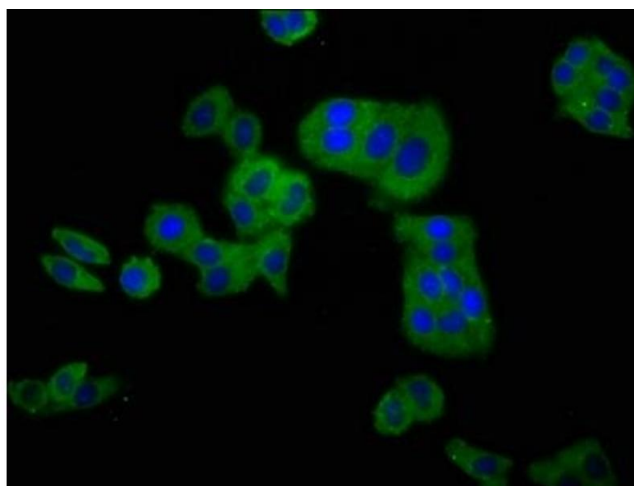
Storage: -20 °C,-80 °C

Storage Comment: Upon receipt, store at -20°C or -80°C. Avoid repeated freeze.



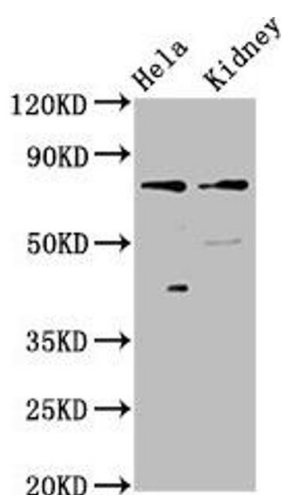
Immunohistochemistry

Image 1. IHC image of ABIN7147581 diluted at 1:300 and staining in paraffin-embedded human breast cancer performed on a Leica Bond™ system. After dewaxing and hydration, antigen retrieval was mediated by high pressure in a citrate buffer (pH 6.0). Section was blocked with 10% normal goat serum 30min at RT. Then primary antibody (1% BSA) was incubated at 4°C overnight. The primary is detected by a biotinylated secondary antibody and visualized using an HRP conjugated SP system.



Immunofluorescence

Image 2. Immunofluorescence staining of HepG2 cells with ABIN7147581 at 1:100, counter-stained with DAPI. The cells were fixed in 4% formaldehyde, permeabilized using 0.2% Triton X-100 and blocked in 10% normal Goat Serum. The cells were then incubated with the antibody overnight at 4°C. The secondary antibody was Alexa Fluor 488-conjugated AffiniPure Goat Anti-Rabbit IgG(H+L).



Western Blotting

Image 3. Western Blot Positive WB detected in: HeLa whole cell lysate, Rat kidney tissue All lanes: CLCNKB antibody at 3 µg/mL Secondary Goat polyclonal to rabbit IgG at 1/50000 dilution Predicted band size: 76, 57 kDa Observed band size: 76 kDa