

Datasheet for ABIN7147590  
**anti-CLIC4 antibody (AA 1-253)**

## 3 Images

[Go to Product page](#)

## Overview

Quantity:	100 µL
Target:	CLIC4
Binding Specificity:	AA 1-253
Reactivity:	Human
Host:	Rabbit
Clonality:	Polyclonal
Conjugate:	This CLIC4 antibody is un-conjugated
Application:	Western Blotting (WB), Immunohistochemistry (IHC), ELISA

## Product Details

Immunogen:	Recombinant Human Chloride intracellular channel protein 4 protein (1-253AA)
Isotype:	IgG
Cross-Reactivity:	Human, Mouse
Purification:	Antigen Affinity purified

## Target Details

Target:	CLIC4
Alternative Name:	CLIC4 ( <a href="#">CLIC4 Products</a> )
Background:	Background: Can insert into membranes and form poorly selective ion channels that may also transport chloride ions. Channel activity depends on the pH . Membrane insertion seems to be

## Target Details

redox-regulated and may occur only under oxydizing conditions. Promotes cell-surface expression of HRH3. Has alternate cellular functions like a potential role in angiogenesis or in maintaining apical-basolateral membrane polarity during mitosis and cytokinesis. Could also promote endothelial cell proliferation and regulate endothelial morphogenesis .

Aliases: Chloride intracellular channel 4 antibody, Chloride intracellular channel 4 (mitochondrial) antibody, Chloride intracellular channel 4 like antibody, Chloride intracellular channel protein 4 antibody, Clic4 antibody, CLIC4\_HUMAN antibody, CLIC4L antibody, DKFZP566G223 antibody, FLJ38640 antibody, H1 antibody, HUH1 antibody, Intracellular chloride ion channel protein p64H1 antibody, MC3S5 antibody, mtCLIC antibody, p64H1 antibody

UniProt: [Q9Y696](#)

## Application Details

Application Notes: Recommended dilution: WB:1:500-1:2000, IHC:1:20-1:200,

Restrictions: For Research Use only

## Handling

Format: Liquid

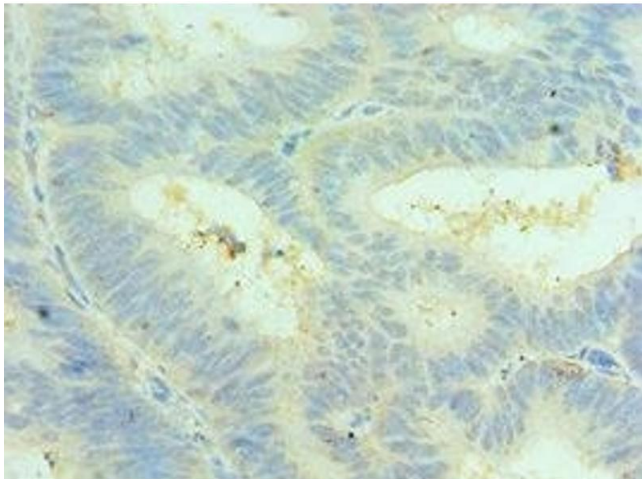
Buffer: PBS with 0.02 % sodium azide, 50 % glycerol, pH 7.3.

Preservative: Sodium azide

Precaution of Use: This product contains Sodium azide: a POISONOUS AND HAZARDOUS SUBSTANCE which should be handled by trained staff only.

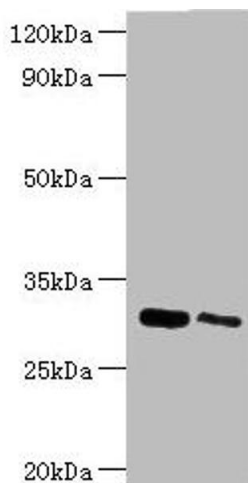
Storage: -20 °C,-80 °C

Storage Comment: Upon receipt, store at -20°C or -80°C. Avoid repeated freeze.



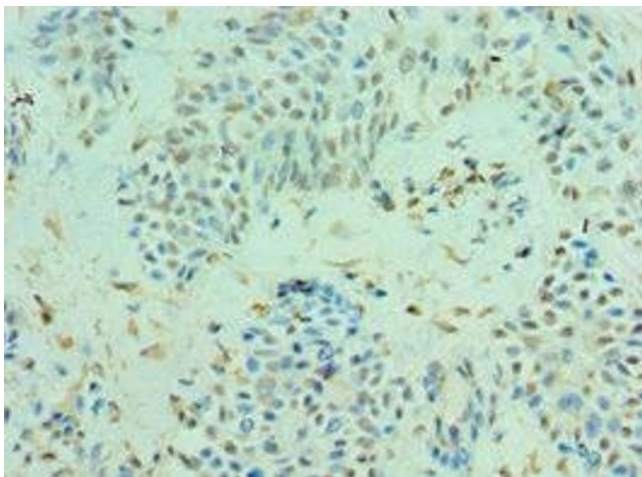
### Immunohistochemistry

**Image 1.** Immunohistochemistry of paraffin-embedded human colon cancer using ABIN7147590 at dilution of 1:100



### Western Blotting

**Image 2.** Western blot All lanes: Chloride intracellular channel protein 4 antibody at 5 µg/mL Lane 1: Mouse kidney tissue Lane 2: Mouse ovarian tissue Secondary Goat polyclonal to rabbit IgG at 1/10000 dilution Predicted band size: 29 kDa Observed band size: 29 kDa



### Immunohistochemistry

**Image 3.** Immunohistochemistry of paraffin-embedded human breast cancer using ABIN7147590 at dilution of 1:100