

Datasheet for ABIN7147600
anti-CH25H antibody (AA 142-272)[Go to Product page](#)

2 Images

Overview

Quantity:	100 µg
Target:	CH25H
Binding Specificity:	AA 142-272
Reactivity:	Human
Host:	Rabbit
Clonality:	Polyclonal
Conjugate:	This CH25H antibody is un-conjugated
Application:	ELISA, Immunohistochemistry (IHC)

Product Details

Immunogen:	Recombinant Human Cholesterol 25-hydroxylase protein (142-272AA)
Isotype:	IgG
Cross-Reactivity:	Human
Purification:	>95%, Protein G purified

Target Details

Target:	CH25H
Alternative Name:	CH25H (CH25H Products)
Background:	Background: Catalyzes the formation of 25-hydroxycholesterol from cholesterol, leading to repress cholesterol biosynthetic enzymes (PubMed:9852097). Plays a key role in cell

Target Details

positioning and movement in lymphoid tissues: 25-hydroxycholesterol is an intermediate in biosynthesis of 7- α ,25-dihydroxycholesterol (7- α ,25-OHC), an oxysterol that acts as a ligand for the G protein-coupled receptor GPR183/EBI2, a chemotactic receptor for a number of lymphoid cells. May play an important role in regulating lipid metabolism by synthesizing a corepressor that blocks sterol regulatory element binding protein (SREBP) processing. In testis, production of 25-hydroxycholesterol by macrophages may play a role in Leydig cell differentiation.

Aliases: CH25H antibody, Cholesterol 25-hydroxylase antibody, EC 1.14.99.38 antibody, Cholesterol 25-monooxygenase antibody, h25OH antibody

UniProt: [O95992](#)

Application Details

Application Notes: Recommended dilution: IHC:1:20-1:200,

Restrictions: For Research Use only

Handling

Format: Liquid

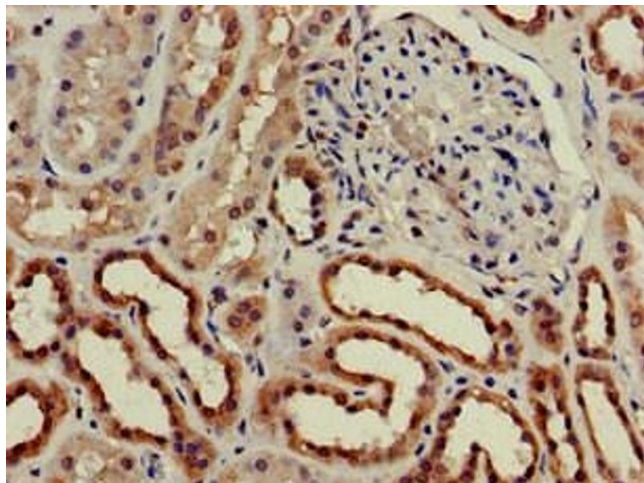
Buffer: Preservative: 0.03 % Proclin 300
Constituents: 50 % Glycerol, 0.01M PBS, pH 7.4

Preservative: ProClin

Precaution of Use: This product contains ProClin: a POISONOUS AND HAZARDOUS SUBSTANCE which should be handled by trained staff only.

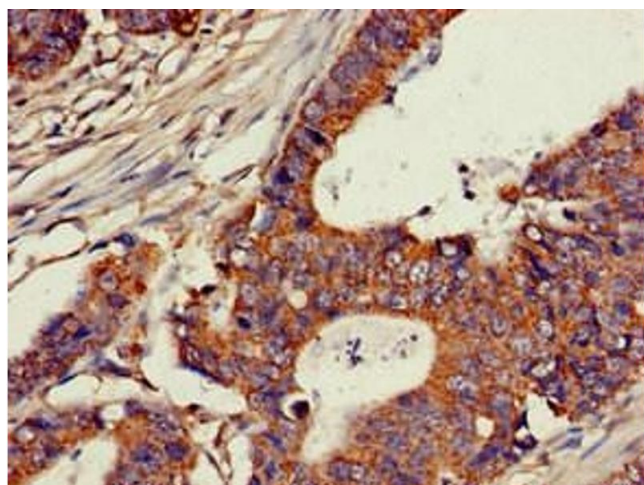
Storage: -20 °C, -80 °C

Storage Comment: Upon receipt, store at -20°C or -80°C. Avoid repeated freeze.



Immunohistochemistry

Image 1. Immunohistochemistry of paraffin-embedded human kidney tissue using ABIN7147600 at dilution of 1:100



Immunohistochemistry

Image 2. Immunohistochemistry of paraffin-embedded human colon cancer using ABIN7147600 at dilution of 1:100