

Datasheet for ABIN7147616

anti-Choline Kinase alpha antibody (AA 79-173)**3** Images[Go to Product page](#)

Overview

Quantity:	100 µg
Target:	Choline Kinase alpha (CHKA)
Binding Specificity:	AA 79-173
Reactivity:	Human
Host:	Rabbit
Clonality:	Polyclonal
Conjugate:	This Choline Kinase alpha antibody is un-conjugated
Application:	Western Blotting (WB), ELISA, Immunohistochemistry (IHC), Immunofluorescence (IF)

Product Details

Immunogen:	Recombinant Human Choline kinase alpha protein (79-173AA)
Isotype:	IgG
Cross-Reactivity:	Human
Purification:	>95%, Protein G purified

Target Details

Target:	Choline Kinase alpha (CHKA)
Alternative Name:	CHKA (CHKA Products)
Background:	Background: Has a key role in phospholipid biosynthesis and may contribute to tumor cell growth. Catalyzes the first step in phosphatidylcholine biosynthesis. Contributes to

Target Details

phosphatidylethanolamine biosynthesis. Phosphorylates choline and ethanolamine. Has higher activity with choline.

Aliases: CHKA antibody, CHK antibody, CKI antibody, Choline kinase alpha antibody, CK antibody, EC 2.7.1.32 antibody, CHETK-alpha antibody, Ethanolamine kinase antibody, EK antibody, EC 2.7.1.82 antibody

UniProt: [P35790](#)

Application Details

Application Notes: Recommended dilution: WB:1:500-1:5000, IHC:1:20-1:200, IF:1:50-1:200,

Restrictions: For Research Use only

Handling

Format: Liquid

Buffer: Preservative: 0.03 % Proclin 300
Constituents: 50 % Glycerol, 0.01M PBS, pH 7.4

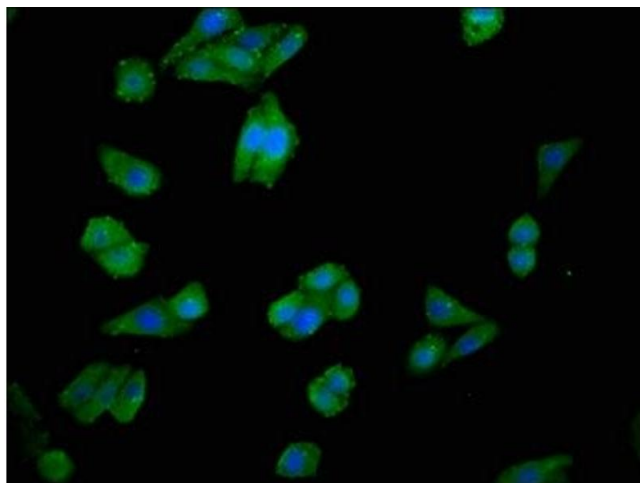
Preservative: ProClin

Precaution of Use: This product contains ProClin: a POISONOUS AND HAZARDOUS SUBSTANCE which should be handled by trained staff only.

Storage: -20 °C,-80 °C

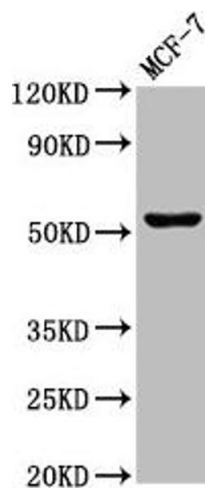
Storage Comment: Upon receipt, store at -20°C or -80°C. Avoid repeated freeze.

Images



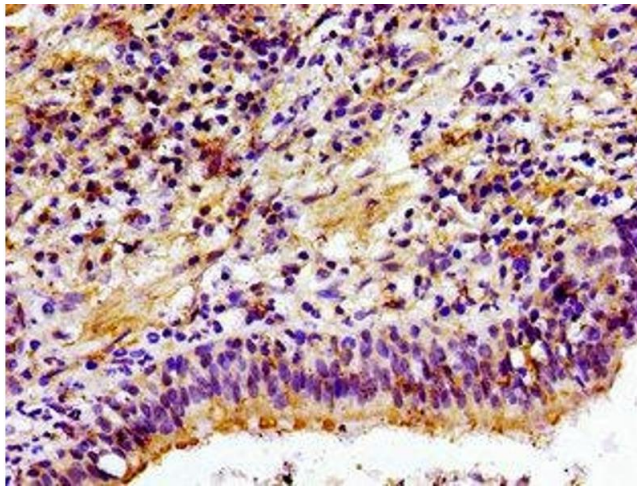
Immunofluorescence

Image 1. Immunofluorescence staining of HepG2 cells with ABIN7147616 at 1:100, counter-stained with DAPI. The cells were fixed in 4% formaldehyde, permeabilized using 0.2% Triton X-100 and blocked in 10% normal Goat Serum. The cells were then incubated with the antibody overnight at 4°C. The secondary antibody was Alexa Fluor 488-conjugated AffiniPure Goat Anti-Rabbit IgG(H+L).



Western Blotting

Image 2. Western Blot Positive WB detected in: MCF-7 whole cell lysate All lanes: CHKA antibody at 3 µg/mL Secondary Goat polyclonal to rabbit IgG at 1/50000 dilution Predicted band size: 53, 51 kDa Observed band size: 53 kDa



Immunohistochemistry

Image 3. Immunohistochemistry of paraffin-embedded human lung cancer using ABIN7147616 at dilution of 1:100