



[Go to Product page](#)

Datasheet for ABIN7147636
anti-CHAD antibody (AA 23-359)

1 Image

Overview

Quantity:	100 µg
Target:	CHAD
Binding Specificity:	AA 23-359
Reactivity:	Human
Host:	Rabbit
Clonality:	Polyclonal
Conjugate:	This CHAD antibody is un-conjugated
Application:	ELISA, Immunohistochemistry (IHC)

Product Details

Immunogen:	Recombinant Human Chondroadherin protein (23-359AA)
Isotype:	IgG
Cross-Reactivity:	Human
Purification:	Antigen Affinity Purified

Target Details

Target:	CHAD
Alternative Name:	CHAD (CHAD Products)
Background:	Background: Promotes attachment of chondrocytes, fibroblasts, and osteoblasts. This binding is mediated (at least for chondrocytes and fibroblasts) by the integrin alpha(2)beta(1). May play

Target Details

an important role in the regulation of chondrocyte growth and proliferation (By similarity).
Aliases: Cartilage leucine rich protein antibody, Cartilage leucine-rich protein antibody, Chad antibody, CHAD_HUMAN antibody, Chondroadherin antibody, Chondroadherin proteoglycan antibody, SLRR4A antibody

UniProt: [015335](#)

Application Details

Application Notes: Recommended dilution: IHC:1:20-1:200,

Restrictions: For Research Use only

Handling

Format: Liquid

Buffer: Preservative: 0.03 % Proclin 300
Constituents: 50 % Glycerol, 0.01M PBS, PH 7.4

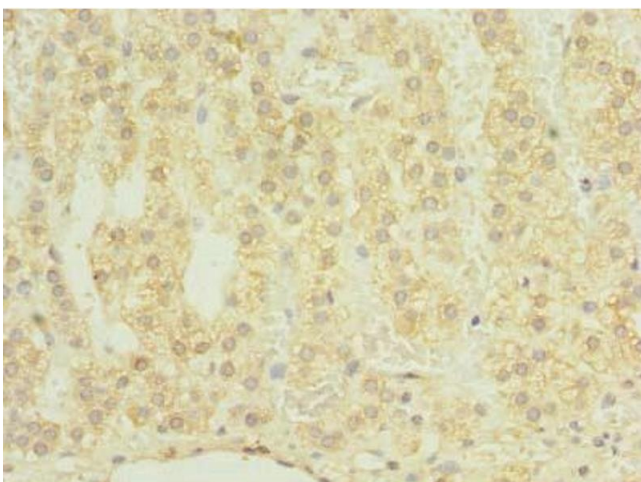
Preservative: ProClin

Precaution of Use: This product contains ProClin: a POISONOUS AND HAZARDOUS SUBSTANCE which should be handled by trained staff only.

Storage: -20 °C,-80 °C

Storage Comment: Upon receipt, store at -20°C or -80°C. Avoid repeated freeze.

Images



Immunohistochemistry

Image 1. Immunohistochemistry of paraffin-embedded human adrenal gland tissue using ABIN7147636 at dilution of 1:100