

Datasheet for ABIN7147653  
**anti-CHRD1 antibody (AA 92-237)**

## 2 Images

[Go to Product page](#)

## Overview

Quantity:	100 µg
Target:	CHRD1
Binding Specificity:	AA 92-237
Reactivity:	Human
Host:	Rabbit
Clonality:	Polyclonal
Application:	Western Blotting (WB), ELISA, Immunohistochemistry (IHC)

## Product Details

Immunogen:	Recombinant Human Chordin-like protein 1 protein (92-237AA)
Isotype:	IgG
Cross-Reactivity:	Human
Purification:	>95%, Protein G purified

## Target Details

Target:	CHRD1
Alternative Name:	CHRD1 ( <a href="#">CHRD1 Products</a> )
Background:	Background: Antagonizes the function of BMP4 by binding to it and preventing its interaction with receptors. Alters the fate commitment of neural stem cells from gliogenesis to neurogenesis. Contributes to neuronal differentiation of neural stem cells in the brain by preventing the adoption of a glial fate. May play a crucial role in dorsoventral axis formation.

## Target Details

May play a role in embryonic bone formation (By similarity). May also play an important role in regulating retinal angiogenesis through modulation of BMP4 actions in endothelial cells. Plays a role during anterior segment eye development.

Aliases: CHL antibody, chordin like 1 antibody, Chordin-like protein 1 antibody, CHRDL1 antibody, CRDL1\_HUMAN antibody, dA141H5.1 antibody, neuralin 1 antibody, Neuralin-1 antibody, Neurogenesin-1 antibody, NRLN1 antibody, Ventroptin antibody, VOPT antibody

UniProt: [Q9BU40](#)

## Application Details

Application Notes: Recommended dilution: WB:1:500-1:5000, IHC:1:200-1:500,

Restrictions: For Research Use only

## Handling

Format: Liquid

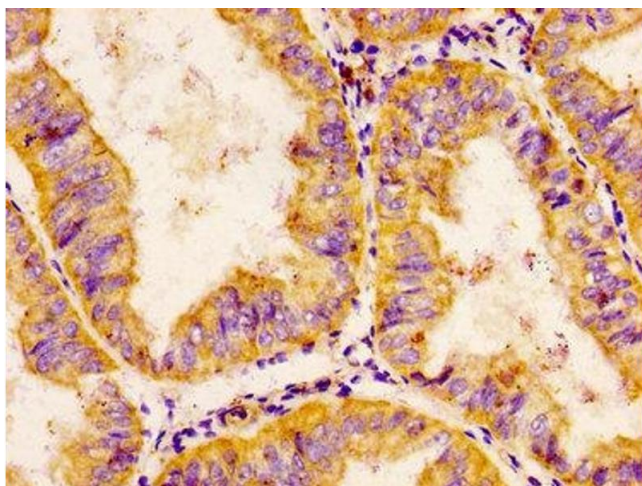
Buffer: Preservative: 0.03 % Proclin 300  
Constituents: 50 % Glycerol, 0.01M PBS, pH 7.4

Preservative: ProClin

Precaution of Use: This product contains ProClin: a POISONOUS AND HAZARDOUS SUBSTANCE which should be handled by trained staff only.

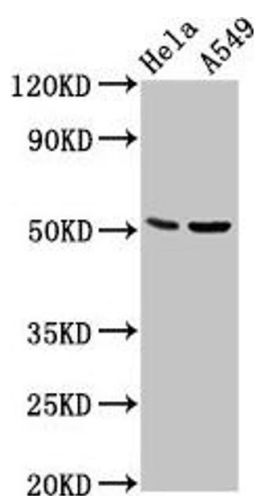
Storage: -20 °C, -80 °C

Storage Comment: Upon receipt, store at -20°C or -80°C. Avoid repeated freeze.



### Immunohistochemistry

**Image 1.** IHC image of ABIN7147653 diluted at 1:200 and staining in paraffin-embedded human endometrial cancer performed on a Leica Bond™ system. After dewaxing and hydration, antigen retrieval was mediated by high pressure in a citrate buffer (pH 6.0). Section was blocked with 10% normal goat serum 30min at RT. Then primary antibody (1% BSA) was incubated at 4°C overnight. The primary is detected by a biotinylated secondary antibody and visualized using an HRP conjugated SP system.



### Western Blotting

**Image 2.** Western Blot Positive WB detected in: HeLa whole cell lysate, A549 whole cell lysate. All lanes: CHRDL1 antibody at 5.7 µg/mL. Secondary Goat polyclonal to rabbit IgG at 1/50000 dilution. Predicted band size: 52, 44, 53 kDa. Observed band size: 52 kDa.