



[Go to Product page](#)

Datasheet for ABIN7147677
anti-SLC18A1 antibody (AA 66-120)

2 Images

Overview

Quantity:	100 µg
Target:	SLC18A1
Binding Specificity:	AA 66-120
Reactivity:	Human
Host:	Rabbit
Clonality:	Polyclonal
Conjugate:	This SLC18A1 antibody is un-conjugated
Application:	Western Blotting (WB), ELISA, Immunohistochemistry (IHC)

Product Details

Immunogen:	Recombinant Human Chromaffin granule amine transporter protein (66-120AA)
Isotype:	IgG
Cross-Reactivity:	Human, Mouse
Purification:	>95%, Protein G purified

Target Details

Target:	SLC18A1
Alternative Name:	SLC18A1 (SLC18A1 Products)
Background:	Background: Involved in the transport of biogenic monoamines, such as serotonin, from the cytoplasm into the secretory vesicles of neuroendocrine and endocrine cells.

Target Details

Aliases: 4832416110Rik antibody, Adrenal chromaffin granule amine transporter, CGAT antibody, CGAT antibody, Chromaffin granule amine transporter antibody, MGC28683 antibody, MGC37299 antibody, SLC18A1 antibody, Solute carrier family 18 (vesicular monoamine), member 1 antibody, Solute carrier family 18 member 1 antibody, VAT 1 antibody, VAT1 antibody, Vesicular amine transporter 1 antibody, VMAT 1 antibody, VMAT1_HUMAN antibody

UniProt: [P54219](#)

Application Details

Application Notes: Recommended dilution: WB:1:1000-1:5000, IHC:1:20-1:200,

Restrictions: For Research Use only

Handling

Format: Liquid

Buffer: Preservative: 0.03 % Proclin 300
Constituents: 50 % Glycerol, 0.01M PBS, PH 7.4

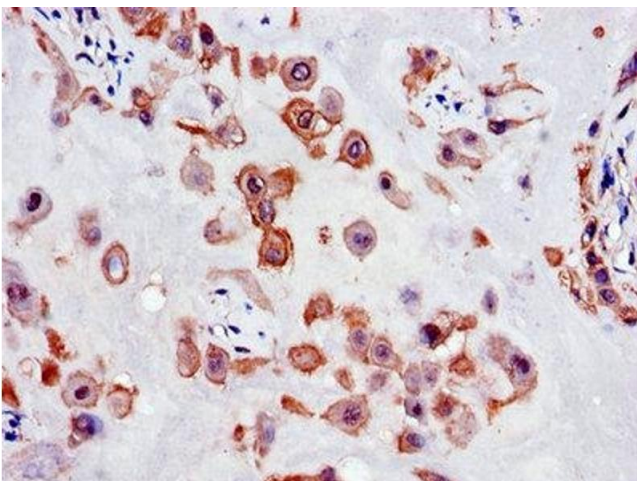
Preservative: ProClin

Precaution of Use: This product contains ProClin: a POISONOUS AND HAZARDOUS SUBSTANCE which should be handled by trained staff only.

Storage: -20 °C,-80 °C

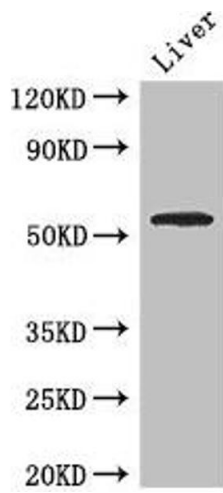
Storage Comment: Upon receipt, store at -20°C or -80°C. Avoid repeated freeze.

Images



Immunohistochemistry

Image 1. Immunohistochemistry of paraffin-embedded human placenta tissue using ABIN7147677 at dilution of 1:100



Western Blotting

Image 2. Western Blot Positive WB detected in: Mouse liver tissue All lanes: SLC18A1 antibody at 2.7 $\mu\text{g}/\text{mL}$ Secondary Goat polyclonal to rabbit IgG at 1/50000 dilution Predicted band size: 57, 51, 53 kDa Observed band size: 57 kDa