

Datasheet for ABIN7147681
anti-CHAF1A antibody (AA 840-904)[Go to Product page](#)

2 Images

Overview

Quantity:	100 µg
Target:	CHAF1A
Binding Specificity:	AA 840-904
Reactivity:	Human
Host:	Rabbit
Clonality:	Polyclonal
Conjugate:	This CHAF1A antibody is un-conjugated
Application:	ELISA, Immunohistochemistry (IHC)

Product Details

Immunogen:	Recombinant Human Chromatin assembly factor 1 subunit A protein (840-904AA)
Isotype:	IgG
Cross-Reactivity:	Human
Purification:	>95%, Protein G purified

Target Details

Target:	CHAF1A
Alternative Name:	CHAF1A (CHAF1A Products)
Background:	Background: Core component of the CAF-1 complex, a complex thought to mediate chromatin assembly in DNA replication and DNA repair. Assembles histone octamers onto replicating DNA

Target Details

in vitro. CAF-1 performs the first step of the nucleosome assembly process, bringing newly synthesized histones H3 and H4 to replicating DNA, histones H2A/H2B can bind to this chromatin precursor subsequent to DNA replication to complete the histone octamer. CHAF1A binds to histones H3 and H4. It may play a role in heterochromatin maintenance in proliferating cells by bringing newly synthesized cbx proteins to heterochromatic DNA replication foci (By similarity).

Aliases: CAF 1 antibody, CAF 1 subunit A antibody, CAF antibody, CAF I 150 kDa subunit antibody, CAF I p150 antibody, CAF-1 subunit A antibody, CAF-I 150 kDa subunit antibody, CAF-I p150 antibody, CAF1 antibody, CAF1A_HUMAN antibody, CAF1B antibody, CAF1P150 antibody, CHAF1A antibody, Chromatin assembly factor 1 subunit A antibody, Chromatin Assembly Factor 1 Subunit A p150 antibody, Chromatin assembly factor I (150 kDa) antibody, Chromatin assembly factor I 150 kDa antibody, Chromatin assembly factor I p150 subunit antibody, DCAF1 antibody, hp150 antibody, MGC71229 antibody, P150 antibody

UniProt: [Q13111](#)

Application Details

Application Notes: Recommended dilution: IHC:1:200-1:500,

Restrictions: For Research Use only

Handling

Format: Liquid

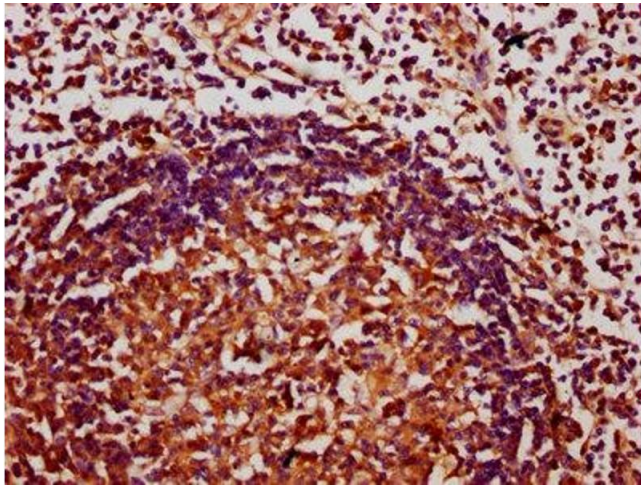
Buffer: Preservative: 0.03 % Proclin 300
Constituents: 50 % Glycerol, 0.01M PBS, pH 7.4

Preservative: ProClin

Precaution of Use: This product contains ProClin: a POISONOUS AND HAZARDOUS SUBSTANCE which should be handled by trained staff only.

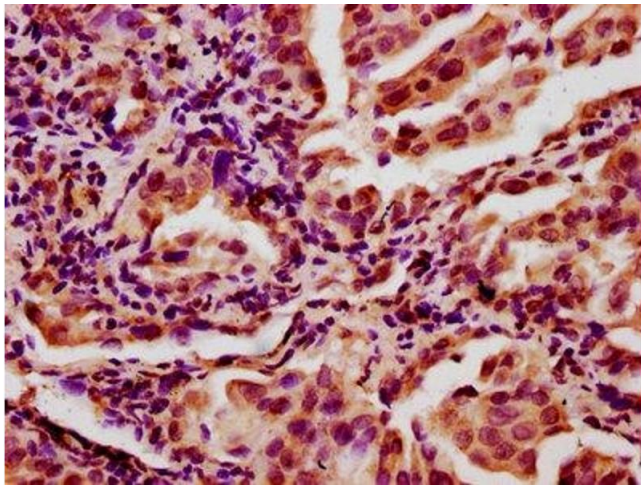
Storage: -20 °C,-80 °C

Storage Comment: Upon receipt, store at -20°C or -80°C. Avoid repeated freeze.



Immunohistochemistry

Image 1. IHC image of ABIN7147681 diluted at 1:400 and staining in paraffin-embedded human lymph node tissue performed on a Leica Bond™ system. After dewaxing and hydration, antigen retrieval was mediated by high pressure in a citrate buffer (pH 6.0). Section was blocked with 10% normal goat serum 30min at RT. Then primary antibody (1% BSA) was incubated at 4°C overnight. The primary is detected by a biotinylated secondary antibody and visualized using an HRP conjugated SP system.



Immunohistochemistry

Image 2. IHC image of ABIN7147681 diluted at 1:400 and staining in paraffin-embedded human lung cancer performed on a Leica Bond™ system. After dewaxing and hydration, antigen retrieval was mediated by high pressure in a citrate buffer (pH 6.0). Section was blocked with 10% normal goat serum 30min at RT. Then primary antibody (1% BSA) was incubated at 4°C overnight. The primary is detected by a biotinylated secondary antibody and visualized using an HRP conjugated SP system.