

Datasheet for ABIN7147715  
**anti-CHD1L antibody (AA 704-897)**

## 2 Images

[Go to Product page](#)

## Overview

|                      |   |
|----------------------|---|
| Quantity:            | 100 µg  |
| Target:              | CHD1L   |
| Binding Specificity: | AA 704-897  |
| Reactivity:          | Human   |
| Host:                | Rabbit  |
| Clonality:           | Polyclonal  |
| Conjugate:           | This CHD1L antibody is un-conjugated                  |
| Application:         | Western Blotting (WB), ELISA, Immunofluorescence (IF) |

## Product Details

|                   |  |
|-------------------|--|
| Immunogen:        | Recombinant Human Chromodomain-helicase-DNA-binding protein 1-like protein (704-897AA) |
| Isotype:          | IgG  |
| Cross-Reactivity: | Human  |
| Purification:     | >95%, Protein G purified   |

## Target Details

|                   |   |
|-------------------|---|
| Target:           | CHD1L   |
| Alternative Name: | CHD1L ( <a href="#">CHD1L Products</a> )  |
| Background:       | Background: DNA helicase which plays a role in chromatin-remodeling following DNA damage.<br>Targeted to sites of DNA damage through interaction with poly(ADP-ribose) and functions to |

## Target Details

regulate chromatin during DNA repair. Able to catalyze nucleosome sliding in an ATP-dependent manner. Helicase activity is strongly stimulated upon poly(ADP-ribose)-binding. Aliases: ALC1 antibody, Amplified in liver cancer 1 antibody, Amplified in liver cancer protein 1 antibody, chd1l antibody, CHD1L\_HUMAN antibody, CHDL antibody, Chromodomain helicase DNA binding protein 1 like antibody, Chromodomain-helicase-DNA-binding protein 1-like antibody, FLJ22530 antibody

UniProt: [Q86WJ1](#)

## Application Details

Application Notes: Recommended dilution: WB:1:500-1:5000, IF:1:200-1:500,

Restrictions: For Research Use only

## Handling

Format: Liquid

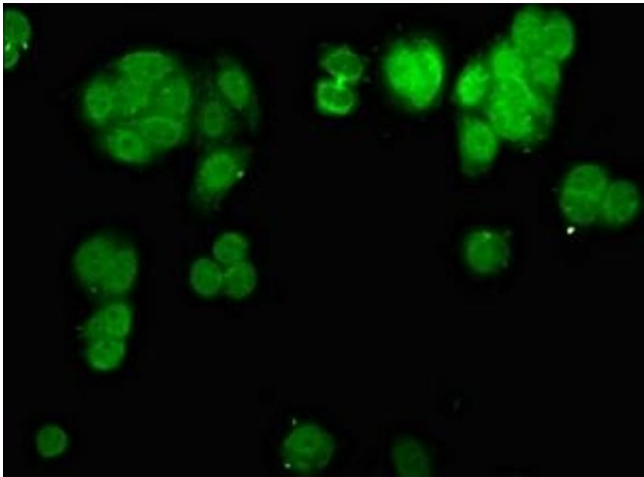
Buffer: Preservative: 0.03 % Proclin 300  
Constituents: 50 % Glycerol, 0.01M PBS, pH 7.4

Preservative: ProClin

Precaution of Use: This product contains ProClin: a POISONOUS AND HAZARDOUS SUBSTANCE which should be handled by trained staff only.

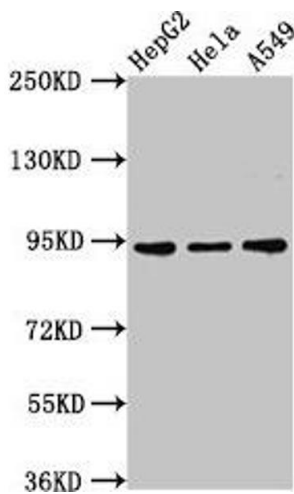
Storage: -20 °C, -80 °C

Storage Comment: Upon receipt, store at -20°C or -80°C. Avoid repeated freeze.



### Immunofluorescence

**Image 1.** Immunofluorescence staining of HepG2 cells with ABIN7147715 at 1:200, counter-stained with DAPI. The cells were fixed in 4% formaldehyde, permeabilized using 0.2% Triton X-100 and blocked in 10% normal Goat Serum. The cells were then incubated with the antibody overnight at 4°C. The secondary antibody was Alexa Fluor 488-conjugated AffiniPure Goat Anti-Rabbit IgG(H+L).



### Western Blotting

**Image 2.** Western Blot Positive WB detected in: HepG2 whole cell lysate, HeLa whole cell lysate, A549 whole cell lysate. All lanes: CHD1L antibody at 3 µg/mL. Secondary Goat polyclonal to rabbit IgG at 1/50000 dilution. Predicted band size: 101, 91, 78, 89, 70 kDa. Observed band size: 91 kDa.