



[Go to Product page](#)

Datasheet for ABIN7147719
anti-CHD2 antibody (AA 1569-1828)

2 Images

Overview

Quantity:	100 µL
Target:	CHD2
Binding Specificity:	AA 1569-1828
Reactivity:	Human
Host:	Rabbit
Clonality:	Polyclonal
Conjugate:	This CHD2 antibody is un-conjugated
Application:	ELISA, Immunohistochemistry (IHC)

Product Details

Immunogen:	Recombinant Human Chromodomain-helicase-DNA-binding protein 2 protein (1569-1828AA)
Isotype:	IgG
Cross-Reactivity:	Human
Purification:	Antigen Affinity Purified

Target Details

Target:	CHD2
Alternative Name:	CHD2 (CHD2 Products)
Background:	Background: DNA-binding helicase that specifically binds to the promoter of target genes, leading to chromatin remodeling, possibly by promoting deposition of histone H3.3. Involved in

Target Details

myogenesis via interaction with MYOD1: binds to myogenic gene regulatory sequences and mediates incorporation of histone H3.3 prior to the onset of myogenic gene expression, promoting their expression (By similarity).

Aliases: 2810013C04Rik antibody, 2810040A01Rik antibody, 5630401D06Rik antibody, A1851092 antibody, ATP dependent helicase CHD2 antibody, ATP-dependent helicase CHD2 antibody, BC029703 antibody, CHD 2 antibody, CHD-2 antibody, CHD2 antibody, CHD2_HUMAN antibody, chromodomain helicase dna binding protein antibody, Chromodomain-helicase-DNA-binding protein 2 antibody, DKFZp54711315 antibody, DKFZp686E01200 antibody, DKFZP781D1727 antibody, EC 3.6.1.- antibody, EEOC antibody, FLJ38614 antibody

UniProt: [O14647](#)

Application Details

Application Notes: Recommended dilution: IHC:1:20-1:200,

Restrictions: For Research Use only

Handling

Format: Liquid

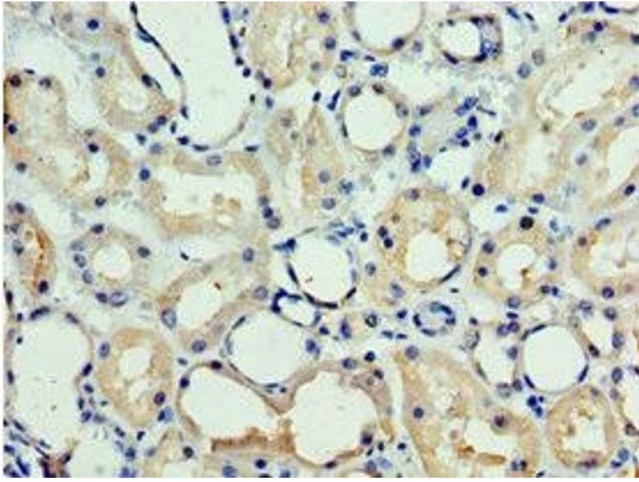
Buffer: PBS with 0.02 % sodium azide, 50 % glycerol, pH 7.3.

Preservative: Sodium azide

Precaution of Use: This product contains Sodium azide: a POISONOUS AND HAZARDOUS SUBSTANCE which should be handled by trained staff only.

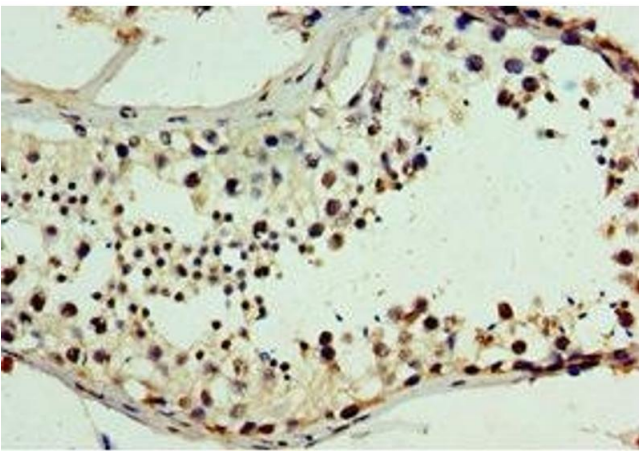
Storage: -20 °C,-80 °C

Storage Comment: Upon receipt, store at -20°C or -80°C. Avoid repeated freeze.



Immunohistochemistry

Image 1. Immunohistochemistry of paraffin-embedded human kidney tissue using ABIN7147719 at dilution of 1:100



Immunohistochemistry

Image 2. Immunohistochemistry of paraffin-embedded human testis tissue using ABIN7147719 at dilution of 1:100