

Datasheet for ABIN7147805
anti-CLYBL antibody (AA 23-340)[Go to Product page](#)

4 Images

Overview

Quantity:	100 µg
Target:	CLYBL
Binding Specificity:	AA 23-340
Reactivity:	Human
Host:	Rabbit
Clonality:	Polyclonal
Conjugate:	This CLYBL antibody is un-conjugated
Application:	ELISA, Western Blotting (WB), Immunohistochemistry (IHC)

Product Details

Immunogen:	Recombinant Human Citrate lyase subunit beta-like protein, mitochondrial protein (23-340AA)
Isotype:	IgG
Cross-Reactivity:	Human, Mouse
Purification:	>95%, Protein G purified

Target Details

Target:	CLYBL
Alternative Name:	CLYBL (CLYBL Products)
Background:	Background: Mitochondrial malate and beta-methylmalate synthase, which may be involved in vitamin B12 metabolism (Probable). Acts both as a malate synthase, converting glyoxylate and

Target Details

acetyl-CoA to malate. Also acts as a beta-methylmalate synthase by mediating conversion of glyoxylate and propionyl-CoA to beta-methylmalate (PubMed:24334609).

Aliases: CLYBL antibody, CLB antibody, Citramalyl-CoA lyase antibody, mitochondrial antibody, EC 4.1.3.25, antibody, 3S)-malyl-CoA thioesterase antibody, EC 3.1.2.30 antibody, Beta-methylmalate synthase antibody, EC 2.3.3.- antibody, Citrate lyase subunit beta-like protein antibody, Citrate lyase beta-like antibody, Malate synthase antibody, EC 2.3.3.9 antibody

UniProt: [Q8N0X4](#)

Application Details

Application Notes: Recommended dilution: WB:1:1000-1:5000, IHC:1:20-1:200,

Restrictions: For Research Use only

Handling

Format: Liquid

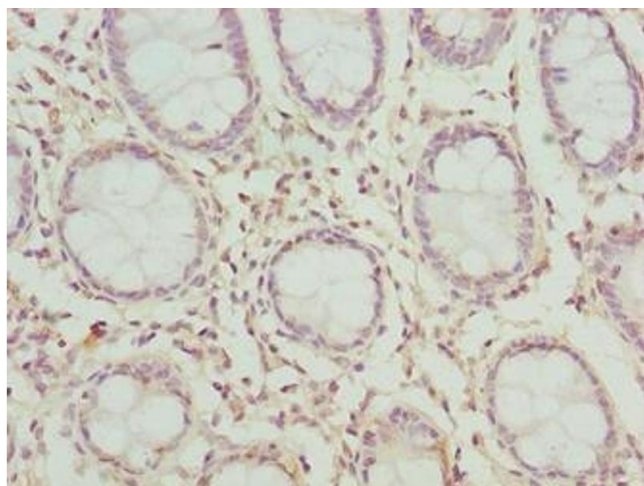
Buffer: Preservative: 0.03 % Proclin 300
Constituents: 50 % Glycerol, 0.01M PBS, PH 7.4

Preservative: ProClin

Precaution of Use: This product contains ProClin: a POISONOUS AND HAZARDOUS SUBSTANCE which should be handled by trained staff only.

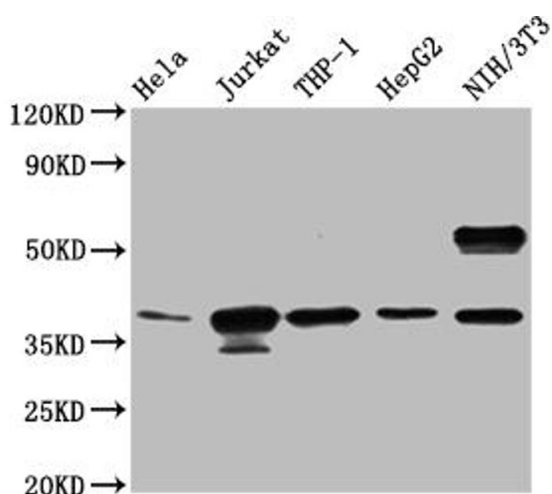
Storage: -20 °C, -80 °C

Storage Comment: Upon receipt, store at -20°C or -80°C. Avoid repeated freeze.



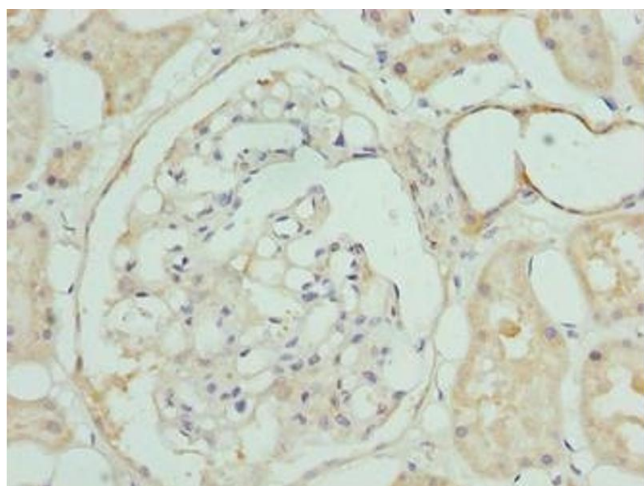
Immunohistochemistry

Image 1. Immunohistochemistry of paraffin-embedded human colon tissue using ABIN7147805 at dilution of 1:100



Western Blotting

Image 2. Western blot All lanes: CLYBL antibody at 1 µg/mL
Lane 1: HeLa whole cell lysate Lane 2: NIH/3T3 whole cell lysate Secondary Goat polyclonal to rabbit IgG at 1/10000 dilution Predicted band size: 38, 34 kDa Observed band size: 38 kDa



Immunohistochemistry

Image 3. Immunohistochemistry of paraffin-embedded human kidney tissue using ABIN7147805 at dilution of 1:100

Please check the [product details page](#) for more images. Overall 4 images are available for ABIN7147805.