



[Go to Product page](#)

Datasheet for ABIN7147817

## anti-CMTM8 antibody (AA 1-39)

### 1 Image

#### Overview

Quantity:	100 µg
Target:	CMTM8
Binding Specificity:	AA 1-39
Reactivity:	Human
Host:	Rabbit
Clonality:	Polyclonal
Conjugate:	This CMTM8 antibody is un-conjugated
Application:	ELISA, Immunofluorescence (IF)

#### Product Details

Immunogen:	Recombinant Human CKLF-like MARVEL transmembrane domain-containing protein 8 protein (1-39AA)
Isotype:	IgG
Cross-Reactivity:	Human
Purification:	>95%, Protein G purified

#### Target Details

Target:	CMTM8
Alternative Name:	CMTM8 ( <a href="#">CMTM8 Products</a> )
Background:	CMTM8 antibody, CKLFSF8CKLF-like MARVEL transmembrane domain-containing protein 8

## Target Details

antibody, Chemokine-like factor superfamily member 8 antibody

UniProt: [Q8IZV2](#)

## Application Details

Application Notes: Recommended dilution: IF:1:50-1:200,

Restrictions: For Research Use only

## Handling

Format: Liquid

Buffer: Preservative: 0.03 % Proclin 300  
Constituents: 50 % Glycerol, 0.01M PBS, PH 7.4

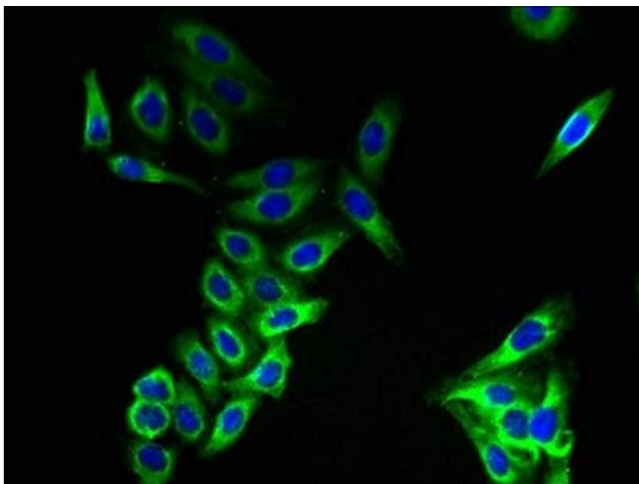
Preservative: ProClin

Precaution of Use: This product contains ProClin: a POISONOUS AND HAZARDOUS SUBSTANCE which should be handled by trained staff only.

Storage: -20 °C,-80 °C

Storage Comment: Upon receipt, store at -20°C or -80°C. Avoid repeated freeze.

## Images



### Immunofluorescence

**Image 1.** Immunofluorescent analysis of HepG2 cells using ABIN7147817 at dilution of 1:100 and Alexa Fluor 488-conjugated AffiniPure Goat Anti-Rabbit IgG(H+L)