



[Go to Product page](#)

Datasheet for ABIN7147859
anti-CLTB antibody (AA 1-211)

2 Images

Overview

Quantity:	100 µg
Target:	CLTB
Binding Specificity:	AA 1-211
Reactivity:	Human
Host:	Rabbit
Clonality:	Polyclonal
Conjugate:	This CLTB antibody is un-conjugated
Application:	ELISA, Immunohistochemistry (IHC)

Product Details

Immunogen:	Recombinant Human Clathrin light chain B protein (1-211AA)
Isotype:	IgG
Cross-Reactivity:	Human
Purification:	>95%, Protein G purified

Target Details

Target:	CLTB
Alternative Name:	CLTB (CLTB Products)
Background:	Background: Clathrin is the major protein of the polyhedral coat of coated pits and vesicles. Aliases: CLTB, Clathrin light chain B antibody, Lcb antibody

Target Details

UniProt: [P09497](#)

Pathways: [Synaptic Membrane](#)

Application Details

Application Notes: Recommended dilution: IHC:1:20-1:200,

Restrictions: For Research Use only

Handling

Format: Liquid

Buffer: Preservative: 0.03 % Proclin 300
Constituents: 50 % Glycerol, 0.01M PBS, PH 7.4

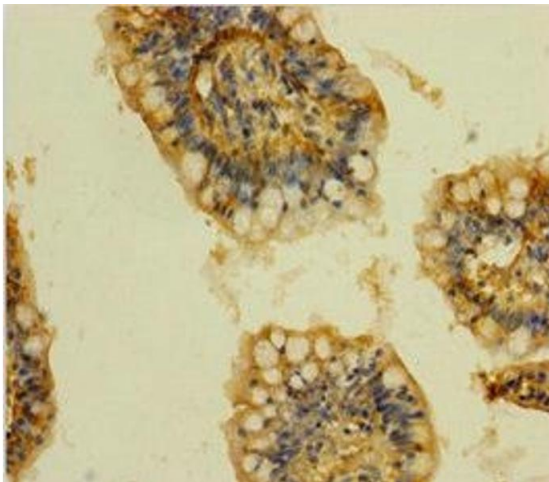
Preservative: ProClin

Precaution of Use: This product contains ProClin: a POISONOUS AND HAZARDOUS SUBSTANCE which should be handled by trained staff only.

Storage: -20 °C,-80 °C

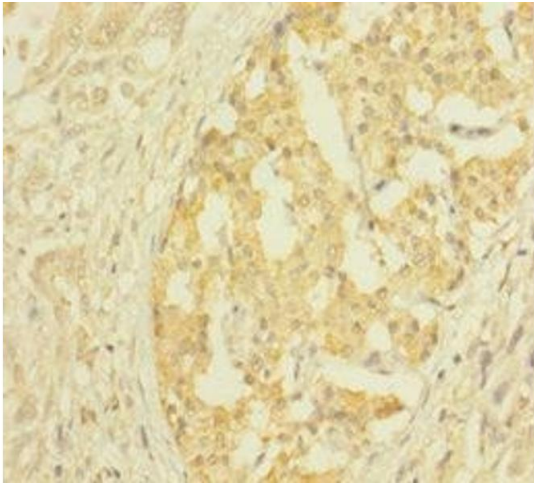
Storage Comment: Upon receipt, store at -20°C or -80°C. Avoid repeated freeze.

Images



Immunohistochemistry

Image 1. Immunohistochemistry of paraffin-embedded human small intestine tissue using ABIN7147859 at dilution of 1:100



Immunohistochemistry

Image 2. Immunohistochemistry of paraffin-embedded human pancreatic cancer using ABIN7147859 at dilution of 1:100