



[Go to Product page](#)

Datasheet for ABIN7147863
anti-CLDND1 antibody (AA 26-140)

1 Image

Overview

Quantity:	100 µL
Target:	CLDND1
Binding Specificity:	AA 26-140
Reactivity:	Human
Host:	Rabbit
Clonality:	Polyclonal
Conjugate:	This CLDND1 antibody is un-conjugated
Application:	ELISA, Immunofluorescence (IF)

Product Details

Immunogen:	Recombinant Human Claudin domain-containing protein 1 protein (26-140AA)
Isotype:	IgG
Cross-Reactivity:	Human
Purification:	Antigen Affinity Purified

Target Details

Target:	CLDND1
Alternative Name:	CLDND1 (CLDND1 Products)
Background:	Background: cell surface Aliases: CLDND1 antibody, C3orf4 antibody, HSPC174 antibody, PSEC0054 antibody,

Target Details

UNQ2511/PRO6000Claudin domain-containing protein 1 antibody, Membrane protein GENX-3745 antibody

UniProt: [Q9NY35](#)

Application Details

Application Notes: Recommended dilution: IF:1:50-1:200,

Restrictions: For Research Use only

Handling

Format: Liquid

Buffer: Preservative: 0.03 % Proclin 300
Constituents: 50 % Glycerol, 0.01M PBS, pH 7.4

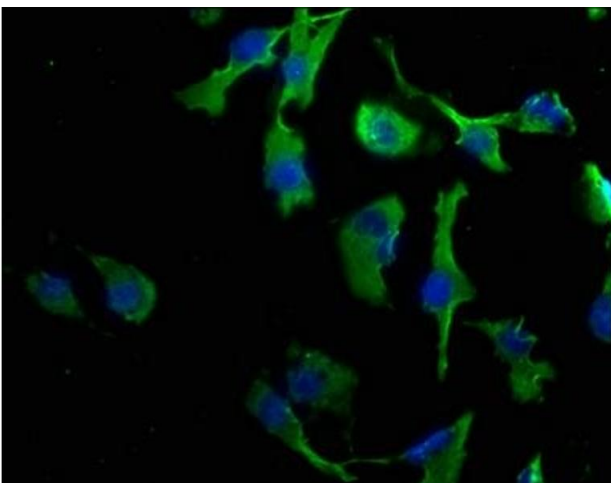
Preservative: ProClin

Precaution of Use: This product contains ProClin: a POISONOUS AND HAZARDOUS SUBSTANCE which should be handled by trained staff only.

Storage: -20 °C,-80 °C

Storage Comment: Upon receipt, store at -20°C or -80°C. Avoid repeated freeze.

Images



Immunofluorescence

Image 1. Immunofluorescence staining of U251 cells with ABIN7147863 at 1:50, counter-stained with DAPI. The cells were fixed in 4 % formaldehyde, permeabilized using 0.2 % Triton X-100 and blocked in 10 % normal Goat Serum. The cells were then incubated with the antibody overnight at 4 °C. The secondary antibody was Alexa Fluor 488-conjugated AffiniPure Goat Anti-Rabbit IgG(H+L).