

Datasheet for ABIN7147875  
**anti-Claudin 1 antibody (AA 185-224)**

## 3 Images

[Go to Product page](#)

## Overview

|                      |   |
|----------------------|---|
| Quantity:            | 100 µg  |
| Target:              | Claudin 1 (CLDN1)   |
| Binding Specificity: | AA 185-224  |
| Reactivity:          | Human   |
| Host:                | Rabbit  |
| Clonality:           | Polyclonal  |
| Conjugate:           | This Claudin 1 antibody is un-conjugated  |
| Application:         | Western Blotting (WB), ELISA, Immunohistochemistry (IHC), Immunofluorescence (IF) |

## Product Details

|                   |  |
|-------------------|--|
| Immunogen:        | Recombinant Human Claudin-10 protein (185-224AA) |
| Isotype:          | IgG  |
| Cross-Reactivity: | Human, Mouse                                     |
| Purification:     | >95%, Protein G purified                         |

## Target Details

|                   |   |
|-------------------|---|
| Target:           | Claudin 1 (CLDN1)   |
| Alternative Name: | CLDN1 ( <a href="#">CLDN1 Products</a> )  |
| Background:       | Background: Plays a major role in tight junction-specific obliteration of the intercellular space, through calcium-independent cell-adhesion activity. May form permselective paracellular pores, |

## Target Details

isoform 1 appears to create pores preferentially permeable to cations and isoform 2 for anions. Plays a key role in controlling cation selectivity and transport in the thick ascending limb (TAL) of Henle's loop in kidney.

Aliases: Claudin-10 antibody, Claudin10 antibody, CLD10\_HUMAN antibody, CLDN 10 antibody, CLDN10 antibody, CLDN10 protein antibody, CPETRL 3 antibody, CPETRL3 antibody, HGNC:2033 antibody, OSP L antibody, OSP like protein antibody, OSP-like protein antibody, OSPL antibody

UniProt: [P78369](#)

Pathways: [Cell-Cell Junction Organization](#), [Hepatitis C](#)

## Application Details

Application Notes: Recommended dilution: WB:1:500-1:5000, IHC:1:20-1:200, IF:1:50-1:200,

Restrictions: For Research Use only

## Handling

Format: Liquid

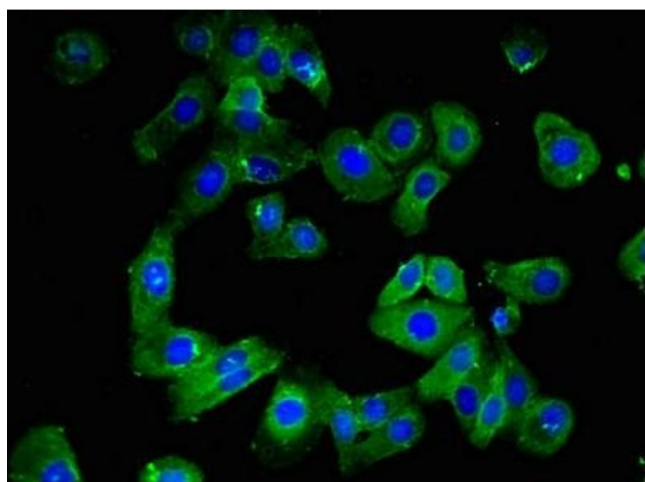
Buffer: Preservative: 0.03 % Proclin 300  
Constituents: 50 % Glycerol, 0.01M PBS, pH 7.4

Preservative: ProClin

Precaution of Use: This product contains ProClin: a POISONOUS AND HAZARDOUS SUBSTANCE which should be handled by trained staff only.

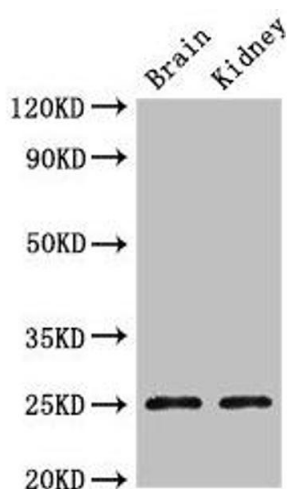
Storage: -20 °C,-80 °C

Storage Comment: Upon receipt, store at -20°C or -80°C. Avoid repeated freeze.



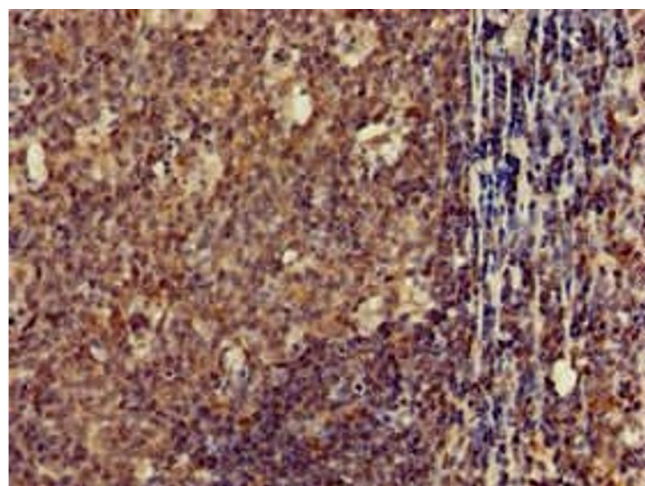
#### Immunofluorescence

**Image 1.** Immunofluorescent analysis of HepG2 cells using ABIN7147875 at dilution of 1:100 and Alexa Fluor 488-conjugated AffiniPure Goat Anti-Rabbit IgG(H+L)



#### Western Blotting

**Image 2.** Western Blot Positive WB detected in: Mouse brain tissue, Mouse kidney tissue All lanes: CLDN10 antibody at 2.4 µg/mL Secondary Goat polyclonal to rabbit IgG at 1/50000 dilution Predicted band size: 25, 23 kDa Observed band size: 25 kDa



#### Immunohistochemistry

**Image 3.** Immunohistochemistry of paraffin-embedded human tonsil tissue using ABIN7147875 at dilution of 1:100