



[Go to Product page](#)

Datasheet for ABIN7147879
anti-Claudin 11 antibody (AA 23-82)

1 Image

Overview

Quantity:	100 µL
Target:	Claudin 11 (CLDN11)
Binding Specificity:	AA 23-82
Reactivity:	Human
Host:	Rabbit
Clonality:	Polyclonal
Conjugate:	This Claudin 11 antibody is un-conjugated
Application:	ELISA, Immunofluorescence (IF)

Product Details

Immunogen:	Recombinant Human Claudin-11 protein (23-82AA)
Isotype:	IgG
Cross-Reactivity:	Human
Purification:	>95%, Protein G purified

Target Details

Target:	Claudin 11 (CLDN11)
Alternative Name:	CLDN11 (CLDN11 Products)
Background:	Background: Plays a major role in tight junction-specific obliteration of the intercellular space, through calcium-independent cell-adhesion activity.

Target Details

Aliases: Claudin 11 antibody, Claudin-11 antibody, CLD11_HUMAN antibody, Cldn11 antibody, Oligodendrocyte transmembrane protein antibody, Oligodendrocyte-specific protein antibody, OSP antibody, OTM antibody

UniProt: [O75508](#)

Pathways: [Hepatitis C](#)

Application Details

Application Notes: Recommended dilution: IF:1:100-1:500,

Restrictions: For Research Use only

Handling

Format: Liquid

Buffer: Preservative: 0.03 % Proclin 300
Constituents: 50 % Glycerol, 0.01M PBS, PH 7.4

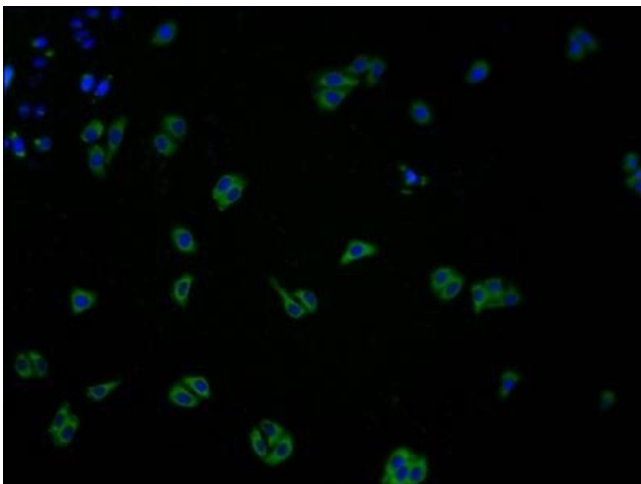
Preservative: ProClin

Precaution of Use: This product contains ProClin: a POISONOUS AND HAZARDOUS SUBSTANCE which should be handled by trained staff only.

Storage: -20 °C,-80 °C

Storage Comment: Upon receipt, store at -20°C or -80°C. Avoid repeated freeze.

Images



Immunofluorescence

Image 1. Immunofluorescence staining of HepG2 cells with ABIN7147879 at 1:100, counter-stained with DAPI. The cells were fixed in 4 % formaldehyde and blocked in 10 % normal Goat Serum. The cells were then incubated with the antibody overnight at 4 °C. The secondary antibody was Alexa Fluor 488-conjugated AffiniPure Goat Anti-Rabbit IgG(H+L).