



[Go to Product page](#)

Datasheet for ABIN7147899  
**anti-Claudin 2 antibody (AA 29-81)**

2 Images

### Overview

Quantity:	100 µg
Target:	Claudin 2 (CLDN2)
Binding Specificity:	AA 29-81
Reactivity:	Human
Host:	Rabbit
Clonality:	Polyclonal
Conjugate:	This Claudin 2 antibody is un-conjugated
Application:	Western Blotting (WB), ELISA, Immunofluorescence (IF)

### Product Details

Immunogen:	Recombinant Human Claudin-20 protein (29-81AA)
Isotype:	IgG
Cross-Reactivity:	Human
Purification:	>95%, Protein G purified

### Target Details

Target:	Claudin 2 (CLDN2)
Alternative Name:	CLDN2 ( <a href="#">CLDN2 Products</a> )
Background:	Background: Plays a major role in tight junction-specific obliteration of the intercellular space, through calcium-independent cell-adhesion activity.

## Target Details

Aliases: Claudin-20 antibody, CLD20\_HUMAN antibody, CLDN20 antibody

UniProt: [P56880](#)

Pathways: [Hepatitis C](#)

## Application Details

Application Notes: Recommended dilution: WB:1:1000-1:5000, IF:1:50-1:200,

Restrictions: For Research Use only

## Handling

Format: Liquid

Buffer: Preservative: 0.03 % Proclin 300  
Constituents: 50 % Glycerol, 0.01M PBS, PH 7.4

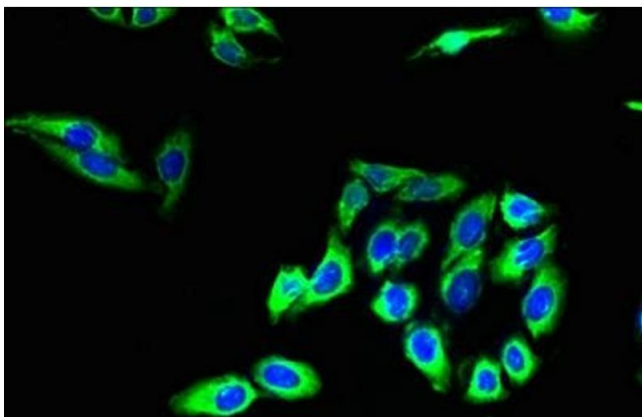
Preservative: ProClin

Precaution of Use: This product contains ProClin: a POISONOUS AND HAZARDOUS SUBSTANCE which should be handled by trained staff only.

Storage: -20 °C,-80 °C

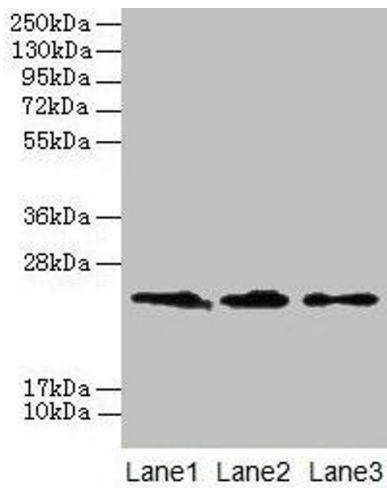
Storage Comment: Upon receipt, store at -20°C or -80°C. Avoid repeated freeze.

## Images



### Immunofluorescence

**Image 1.** Immunofluorescent analysis of HepG2 cells using ABIN7147899 at dilution of 1:100 and Alexa Fluor 488-conjugated AffiniPure Goat Anti-Rabbit IgG(H+L)



### Western Blotting

**Image 2.** Western blot All lanes: CLDN20 antibody at 4  $\mu$ g/mL Lane 1: A549 whole cell lysate Lane 2: HepG2 whole cell lysate Lane 3: PC-3 whole cell lysate Secondary Goat polyclonal to rabbit IgG at 1/10000 dilution Predicted band size: 24 kDa Observed band size: 24 kDa