



[Go to Product page](#)

Datasheet for ABIN7147903

anti-Claudin 3 antibody (AA 181-220)

2 Images

Overview

| | |
|----------------------|--|
| Quantity: | 100 µg |
| Target: | Claudin 3 (CLDN3) |
| Binding Specificity: | AA 181-220 |
| Reactivity: | Human |
| Host: | Rabbit |
| Clonality: | Polyclonal |
| Conjugate: | This Claudin 3 antibody is un-conjugated |
| Application: | Western Blotting (WB), ELISA, Immunohistochemistry (IHC) |

Product Details

| | |
|-------------------|---|
| Immunogen: | Recombinant Human Claudin-3 protein (181-220AA) |
| Isotype: | IgG |
| Cross-Reactivity: | Human |
| Purification: | >95%, Protein G purified |

Target Details

| | |
|-------------------|--|
| Target: | Claudin 3 (CLDN3) |
| Alternative Name: | CLDN3 (CLDN3 Products) |
| Background: | Background: Plays a major role in tight junction-specific obliteration of the intercellular space, through calcium-independent cell-adhesion activity. |

Target Details

Aliases: C7orf1 antibody, Claudin-3 antibody, Claudin3 antibody, CLD3_HUMAN antibody, CLDN3 antibody, Cldn3 antibody, Clostridium perfringens enterotoxin receptor 2 antibody, CPE R2 antibody, CPE receptor 2 antibody, CPE-R 2 antibody, CPE-receptor 2 antibody, CPETR 2 antibody, CPETR2 antibody, HRVP 1 antibody, HRVP1 antibody, Rat ventral prostate 1 like protein antibody, Rat ventral prostate.1 protein homolog antibody, RVP1 antibody, Ventral prostate.1 like protein antibody, Ventral prostate.1 protein homolog antibody

UniProt: [O15551](#)

Pathways: [Hepatitis C](#)

Application Details

Application Notes: Recommended dilution: WB:1:500-1:5000, IHC:1:20-1:200,

Restrictions: For Research Use only

Handling

Format: Liquid

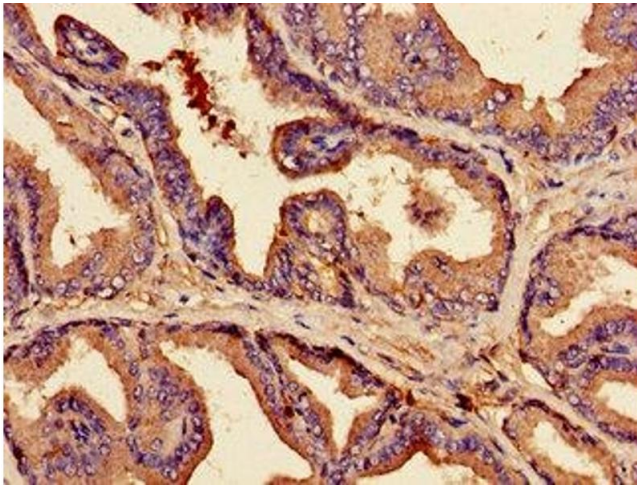
Buffer: Preservative: 0.03 % Proclin 300
Constituents: 50 % Glycerol, 0.01M PBS, pH 7.4

Preservative: ProClin

Precaution of Use: This product contains ProClin: a POISONOUS AND HAZARDOUS SUBSTANCE which should be handled by trained staff only.

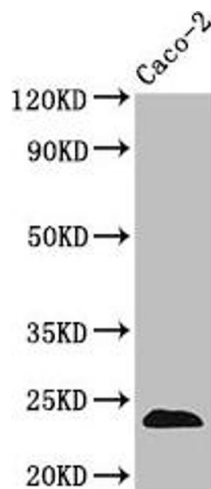
Storage: -20 °C,-80 °C

Storage Comment: Upon receipt, store at -20°C or -80°C. Avoid repeated freeze.



Immunohistochemistry

Image 1. Immunohistochemistry of paraffin-embedded human prostate tissue using ABIN7147903 at dilution of 1:100



Western Blotting

Image 2. Western Blot Positive WB detected in: Caco-2 whole cell lysate All lanes: CLDN3 antibody at 3.5 µg/mL Secondary Goat polyclonal to rabbit IgG at 1/50000 dilution Predicted band size: 24 kDa Observed band size: 24 kDa