

Datasheet for ABIN7147911
anti-Claudin 6 antibody (AA 182-220)



[Go to Product page](#)

2 Images

Overview

Quantity:	100 µg
Target:	Claudin 6 (CLDN6)
Binding Specificity:	AA 182-220
Reactivity:	Human
Host:	Rabbit
Clonality:	Polyclonal
Conjugate:	This Claudin 6 antibody is un-conjugated
Application:	ELISA, Immunohistochemistry (IHC), Immunofluorescence (IF)

Product Details

Immunogen:	Recombinant Human Claudin-6 protein (182-220AA)
Isotype:	IgG
Cross-Reactivity:	Human
Purification:	>95%, Protein G purified

Target Details

Target:	Claudin 6 (CLDN6)
Alternative Name:	CLDN6 (CLDN6 Products)
Background:	Background: Plays a major role in tight junction-specific obliteration of the intercellular space (By similarity). May act as a coreceptor for HCV entry into hepatic cells.

Target Details

Aliases: Claudin-6 antibody, Claudin6 antibody, CLD6_HUMAN antibody, CLDN 6 antibody, CLDN6 antibody, OTTHUMP00000159248 antibody, Skullin 2 antibody, Skullin antibody, UNQ757/PRO1488 antibody

UniProt: [P56747](#)

Pathways: [Hepatitis C](#)

Application Details

Application Notes: Recommended dilution: IHC:1:20-1:200, IF:1:50-1:200,

Restrictions: For Research Use only

Handling

Format: Liquid

Buffer: Preservative: 0.03 % Proclin 300
Constituents: 50 % Glycerol, 0.01M PBS, pH 7.4

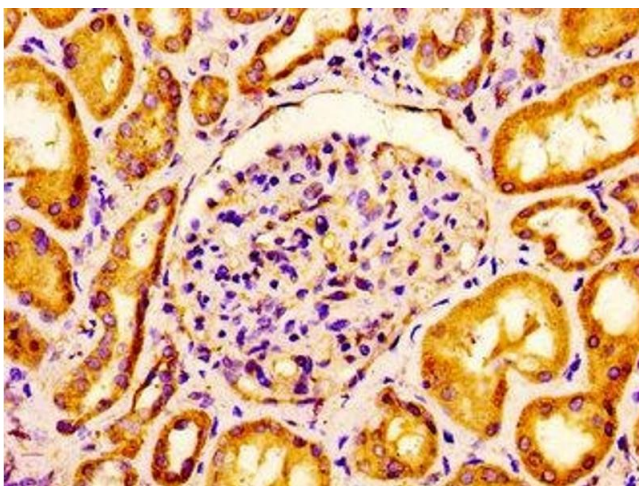
Preservative: ProClin

Precaution of Use: This product contains ProClin: a POISONOUS AND HAZARDOUS SUBSTANCE which should be handled by trained staff only.

Storage: -20 °C,-80 °C

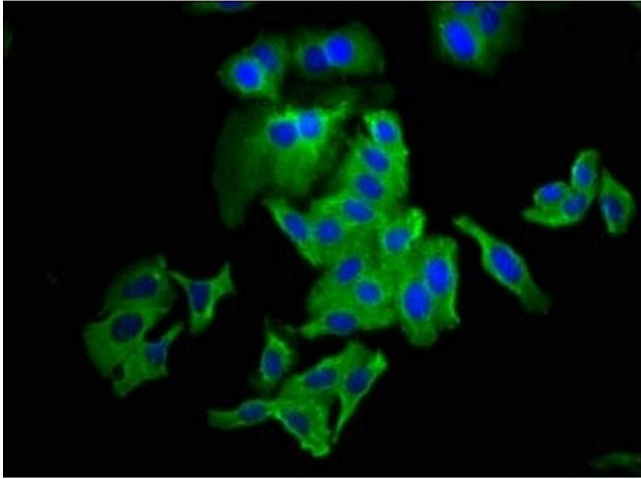
Storage Comment: Upon receipt, store at -20°C or -80°C. Avoid repeated freeze.

Images



Immunohistochemistry

Image 1. Immunohistochemistry of paraffin-embedded human kidney tissue using ABIN7147911 at dilution of 1:100



Immunofluorescence

Image 2. Immunofluorescence staining of HepG2 cells with ABIN7147911 at 1:133, counter-stained with DAPI. The cells were fixed in 4% formaldehyde, permeabilized using 0.2% Triton X-100 and blocked in 10% normal Goat Serum. The cells were then incubated with the antibody overnight at 4°C. The secondary antibody was Alexa Fluor 488-conjugated AffiniPure Goat Anti-Rabbit IgG(H+L).